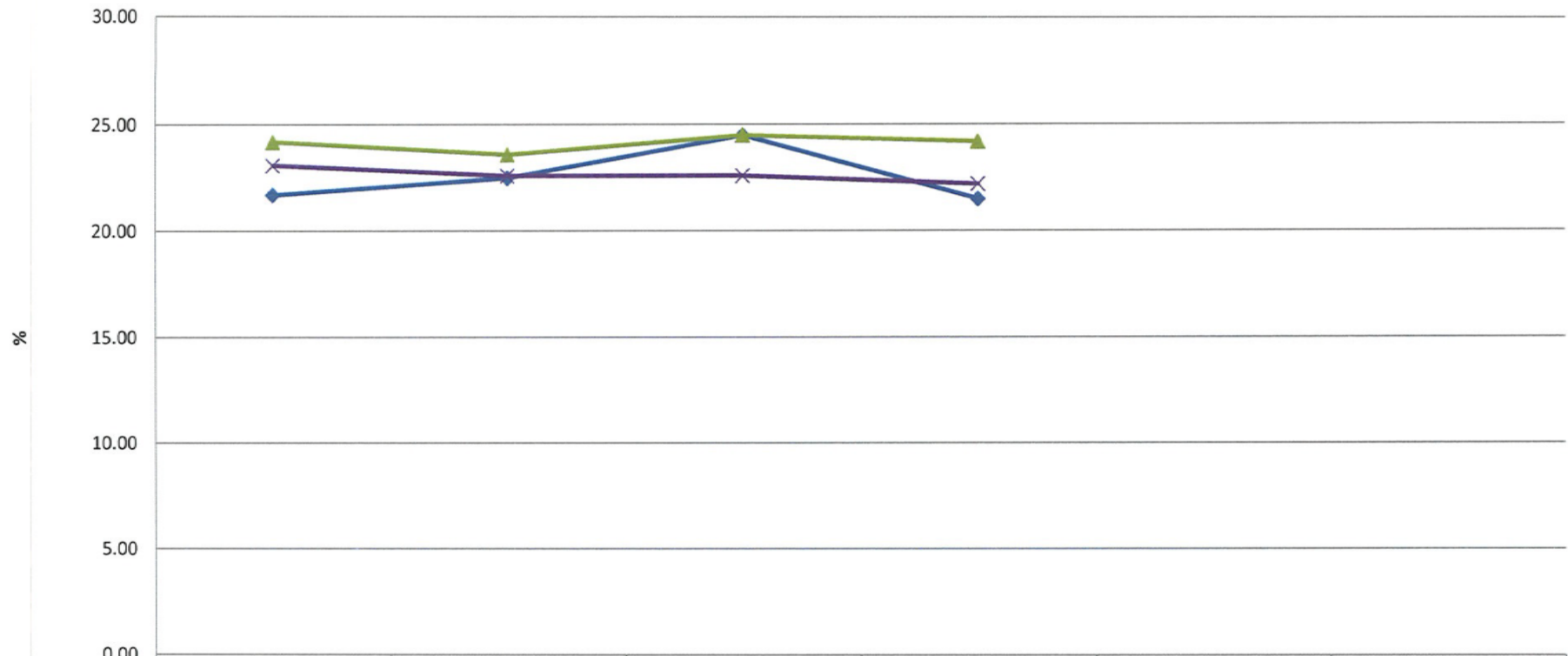
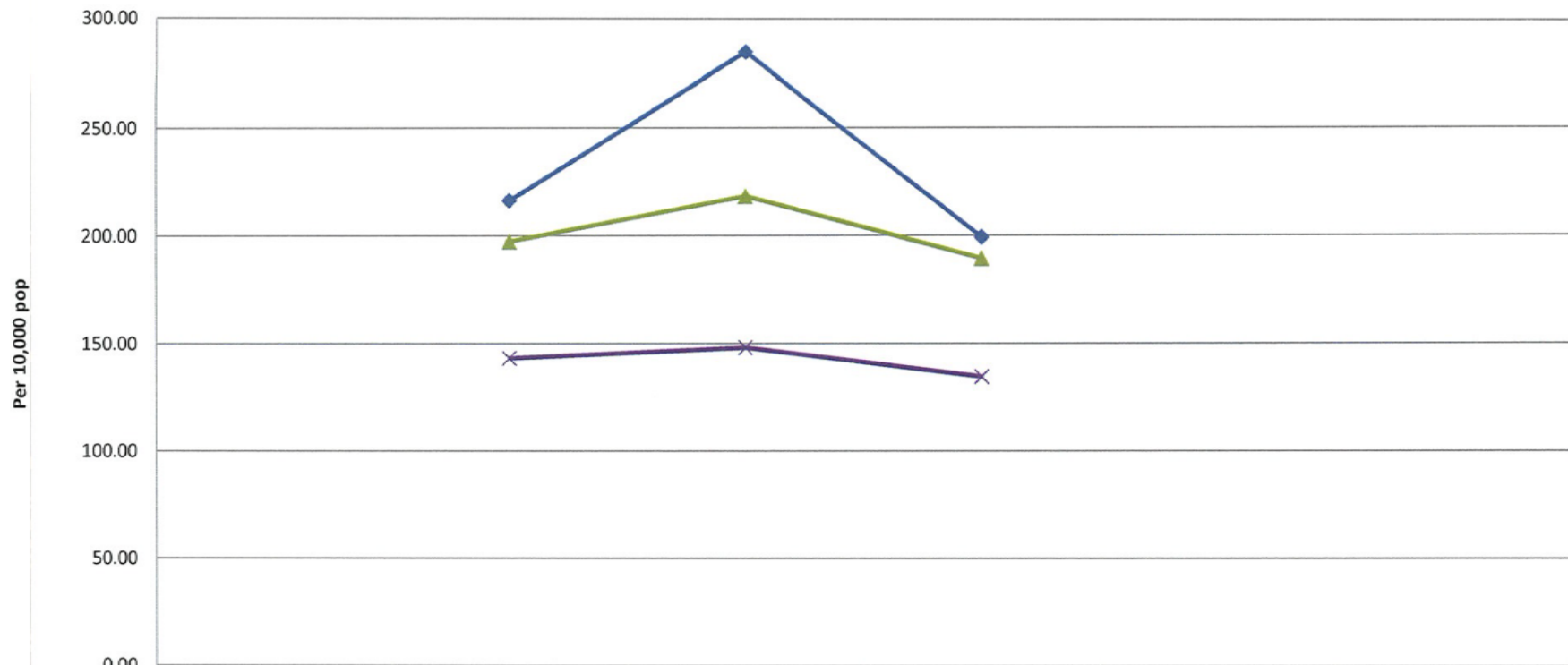


PH 010 (PHOF 2.06i) Excess weight among primary school age children in Reception year What's Best: Smaller



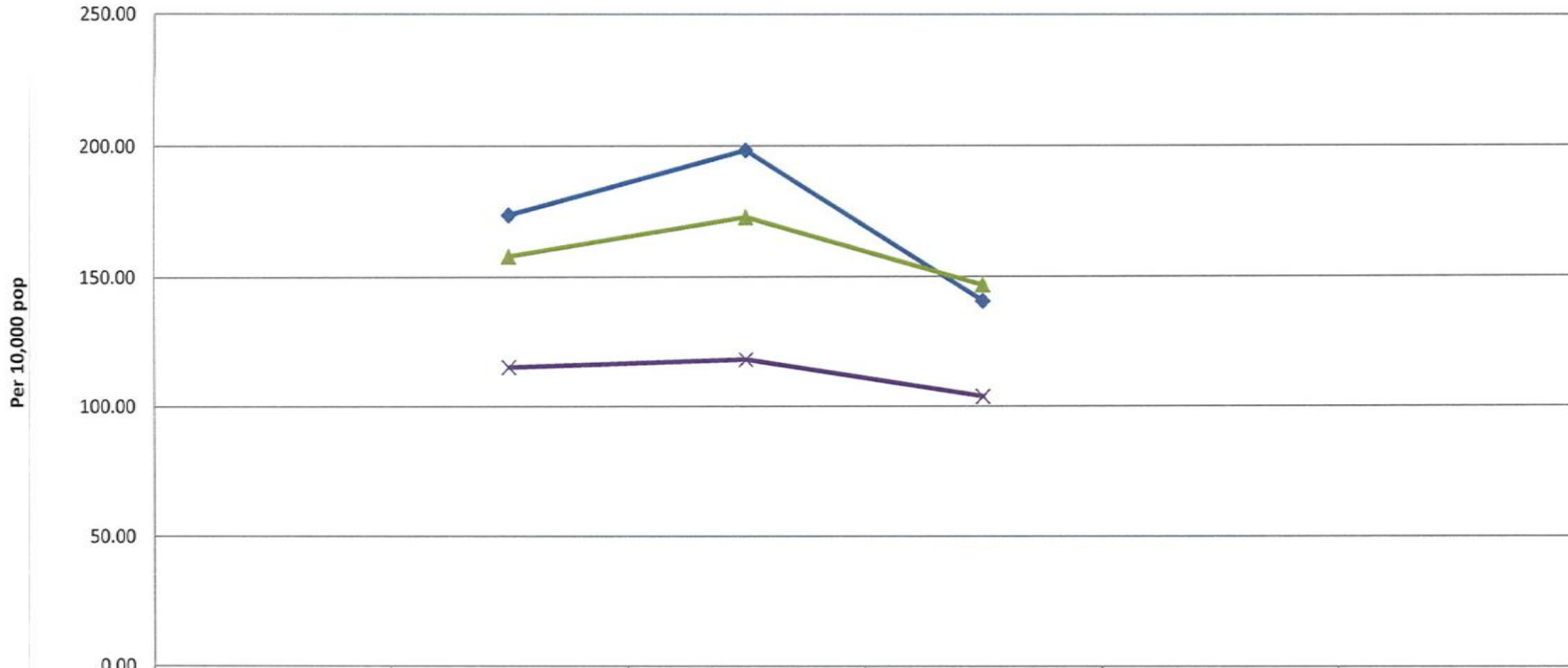
	2009/2010	2010/2011	2011/2012	2012/2013	2013/2014	2014/2015
Actual	21.70	22.50	24.50	21.50		
Target						
North East	24.20	23.60	24.50	24.20		
England	23.10	22.60	22.60	22.20		

PH 015 (PHOF 2.7i) Hospital admissions caused by unintentional and deliberate injuries to children (0-4 years of age) What's Best: Smaller



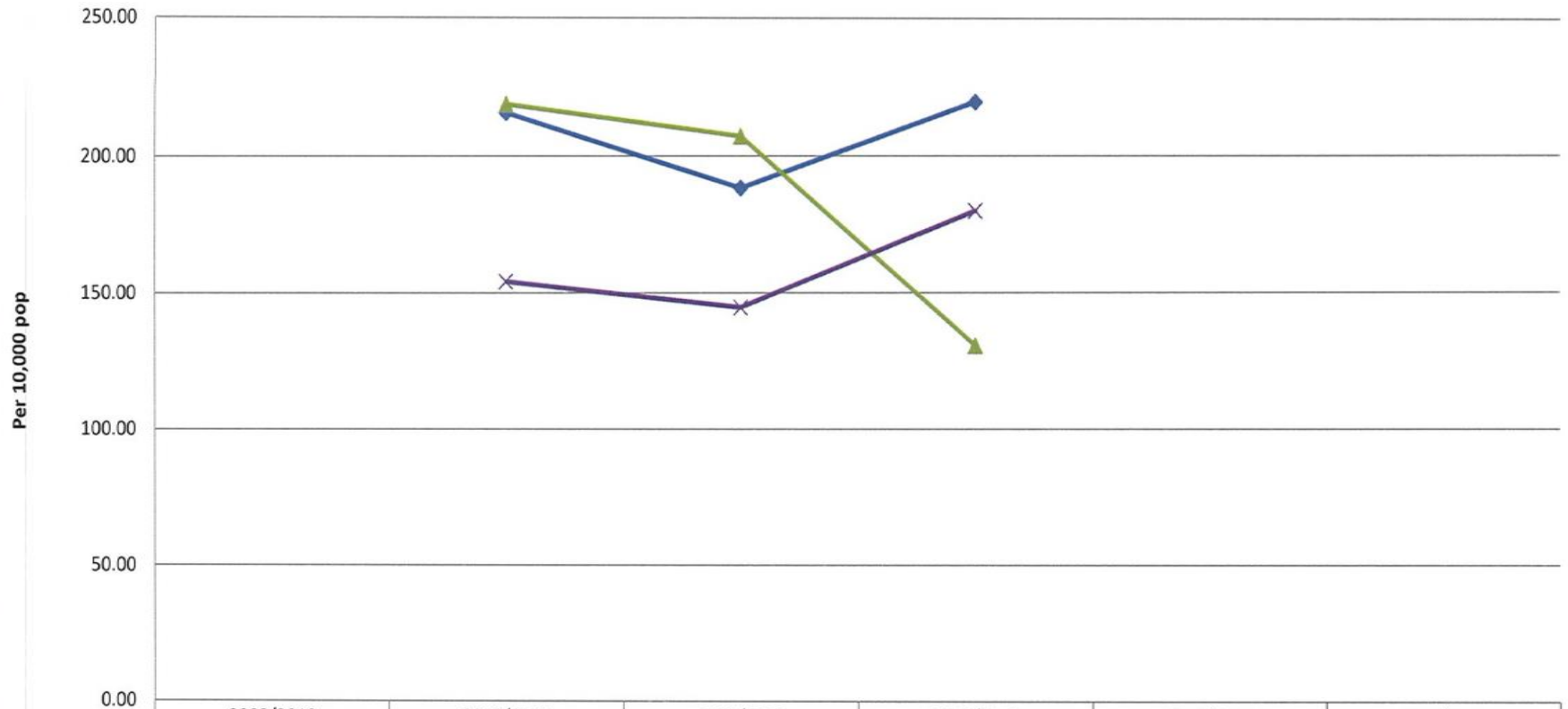
	2009/2010	2010/2011	2011/2012	2012/2013	2013/2014	2014/2015
Actual		216.40	284.80	199.40		
Target						
North East		197.40	218.30	189.50		
England		143.30	148.20	134.70		

PH 016 (PHOF 2.07i) Hospital admissions caused by unintentional and deliberate injuries to children (0-14 years of age) What's Best: Smaller



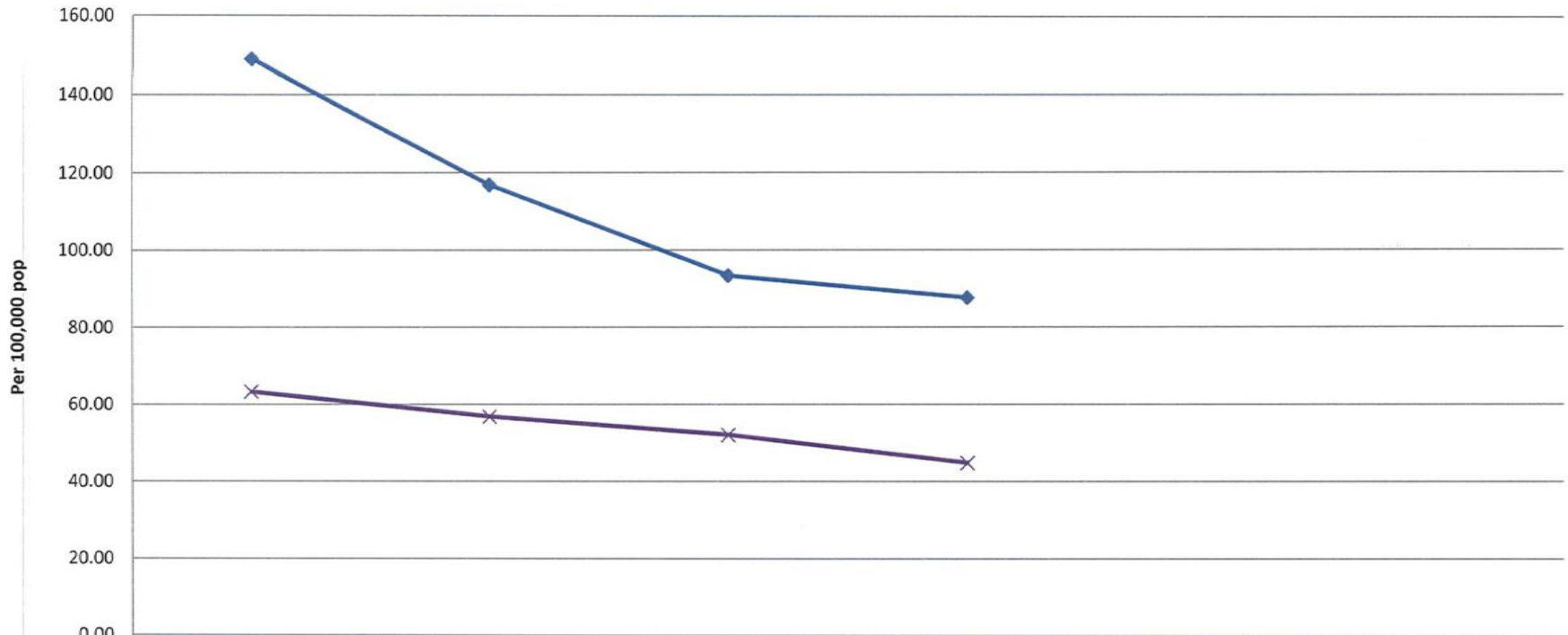
	2009/2010	2010/2011	2011/2012	2012/2013	2013/2014	2014/2015
Actual		173.80	198.40	140.70		
Target						
North East		158.00	172.90	146.80		
England		115.20	118.20	103.80		

PH 017 (PHOF 2.7ii) Hospital admissions caused by unintentional and deliberate injuries to children (15-24 years of age) What's Best: Smaller



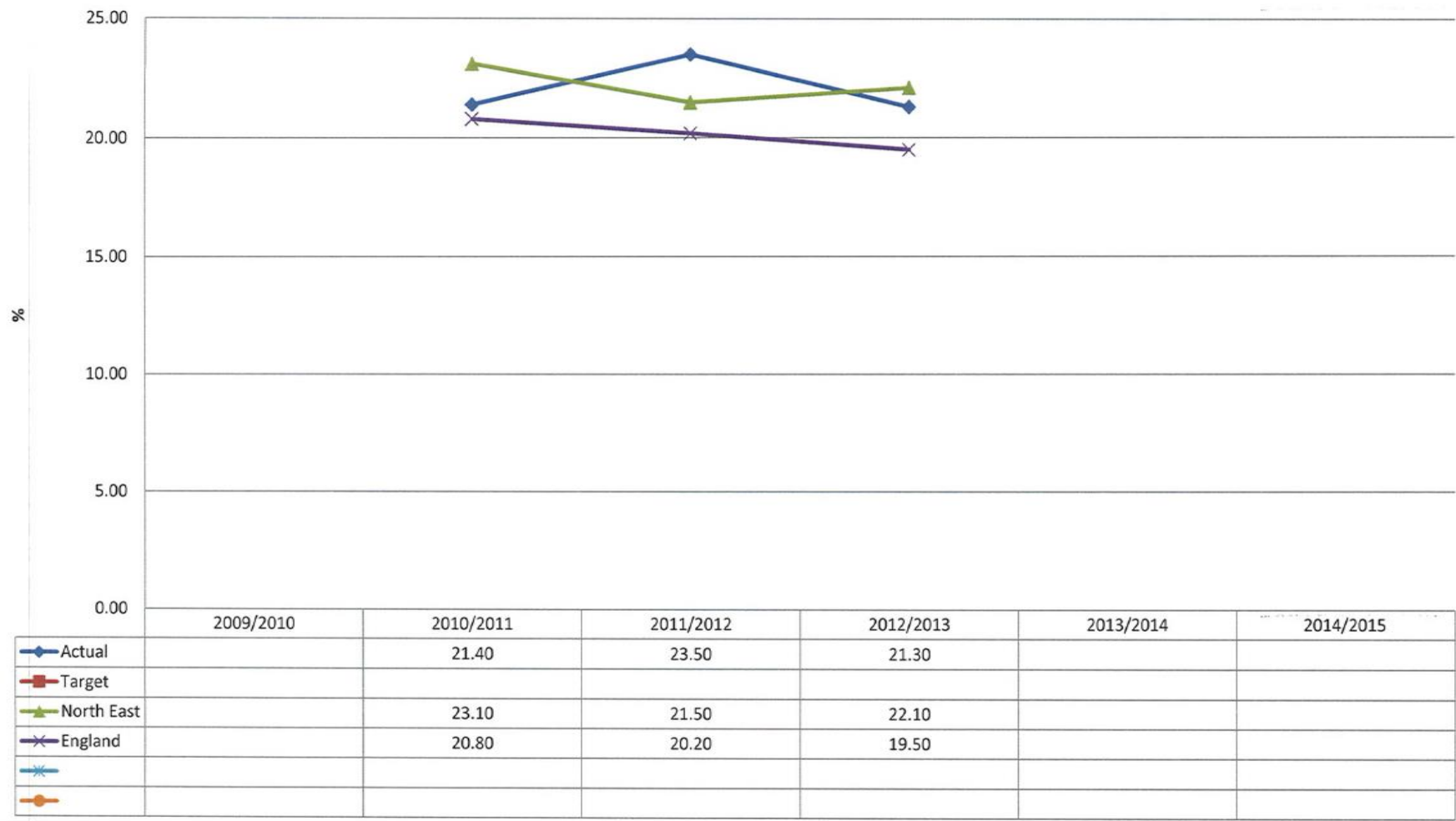
	2009/2010	2010/2011	2011/2012	2012/2013	2013/2014	2014/2015
Actual		215.90	188.40	219.80		
Target						
North East		218.90	207.30	130.70		
England		154.20	144.70	180.00		

PH 019 Alcohol-specific hospital admissions in the under 18s (LAPE) What's Best: Smaller

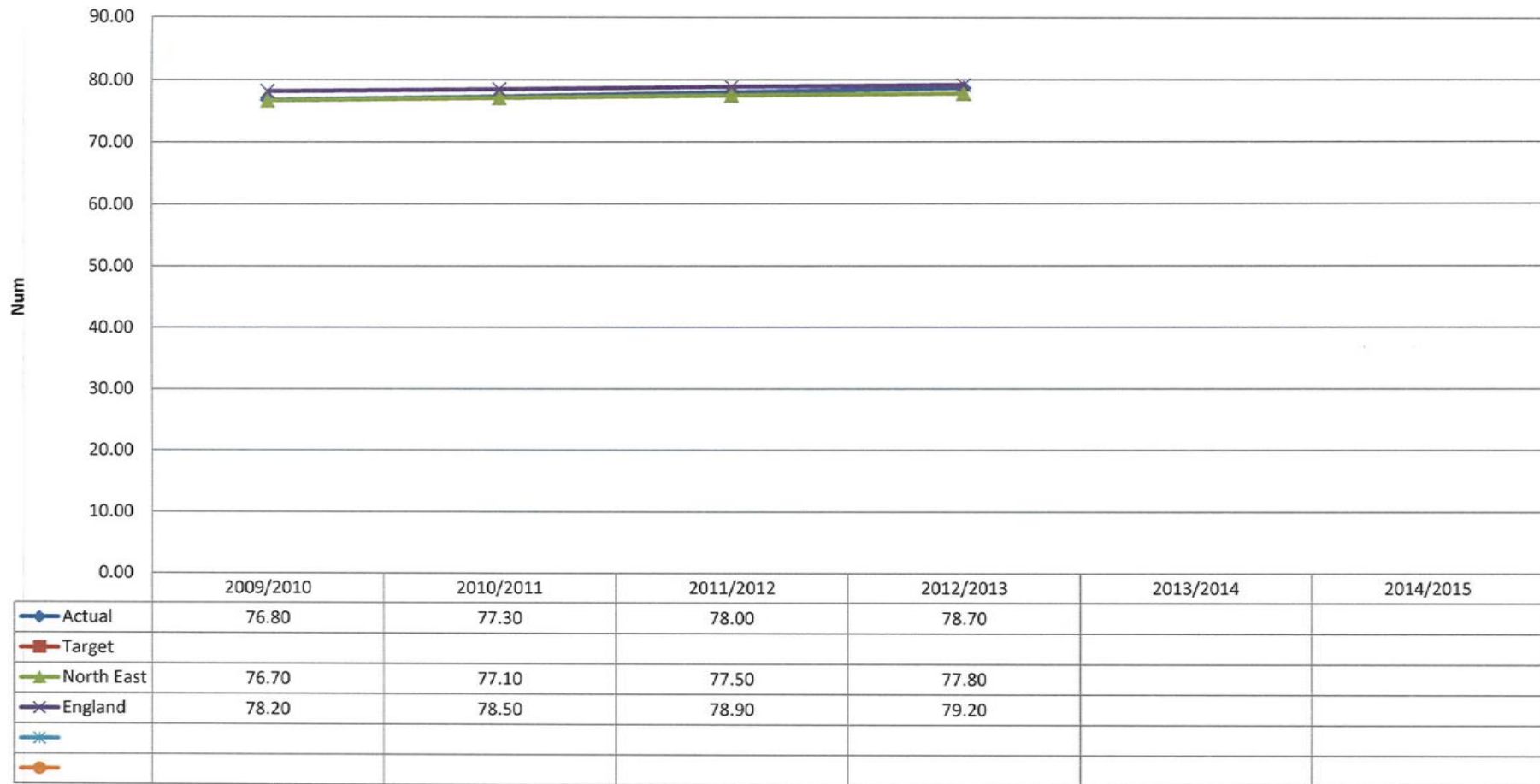


	2009/2010	2010/2011	2011/2012	2012/2013	2013/2014	2014/2015
Actual	149.01	116.90	93.43	87.64		
Target						
England	63.32	56.91	52.15	44.88		

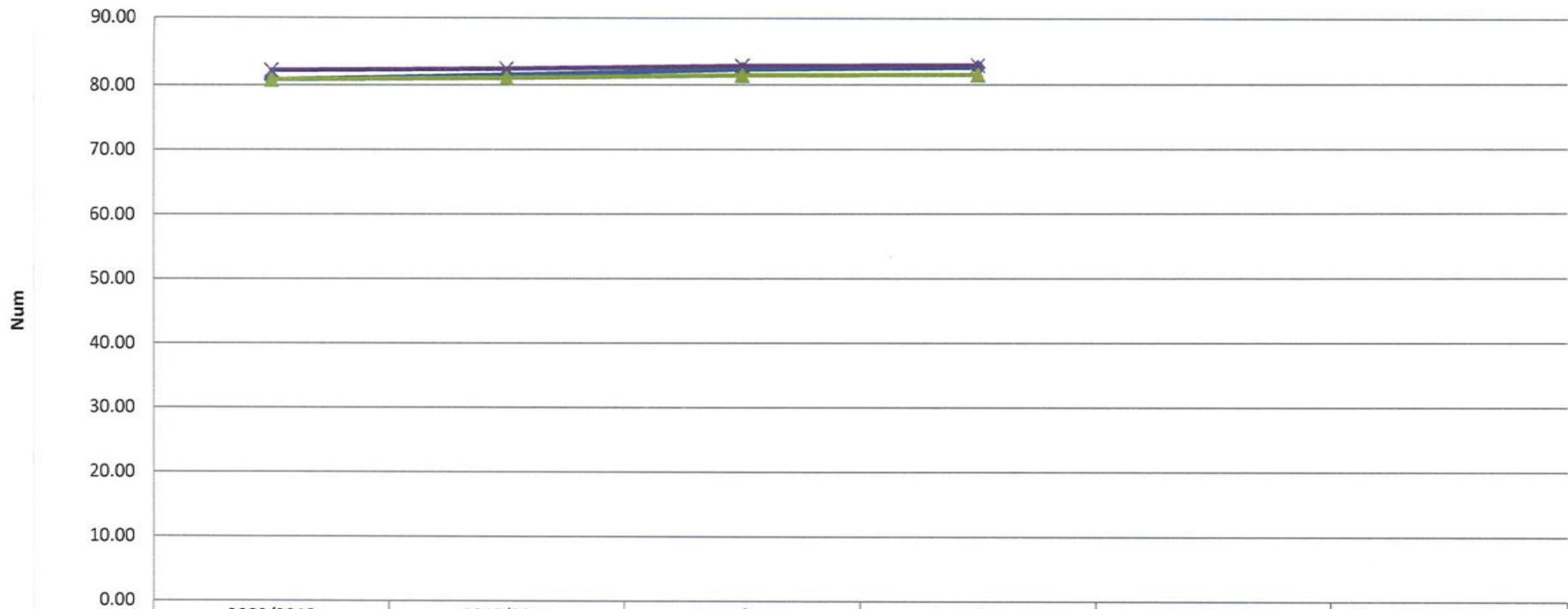
PH 024 (PHOF 2.14) Prevalence of smoking among persons aged 18 years and over
What's Best: Smaller



PH 030 (PHOF 0.1ii) Life expectancy at birth (MALE) : the average number of years a person would expect to live based on contemporary mortality rates. What's Best: Bigger

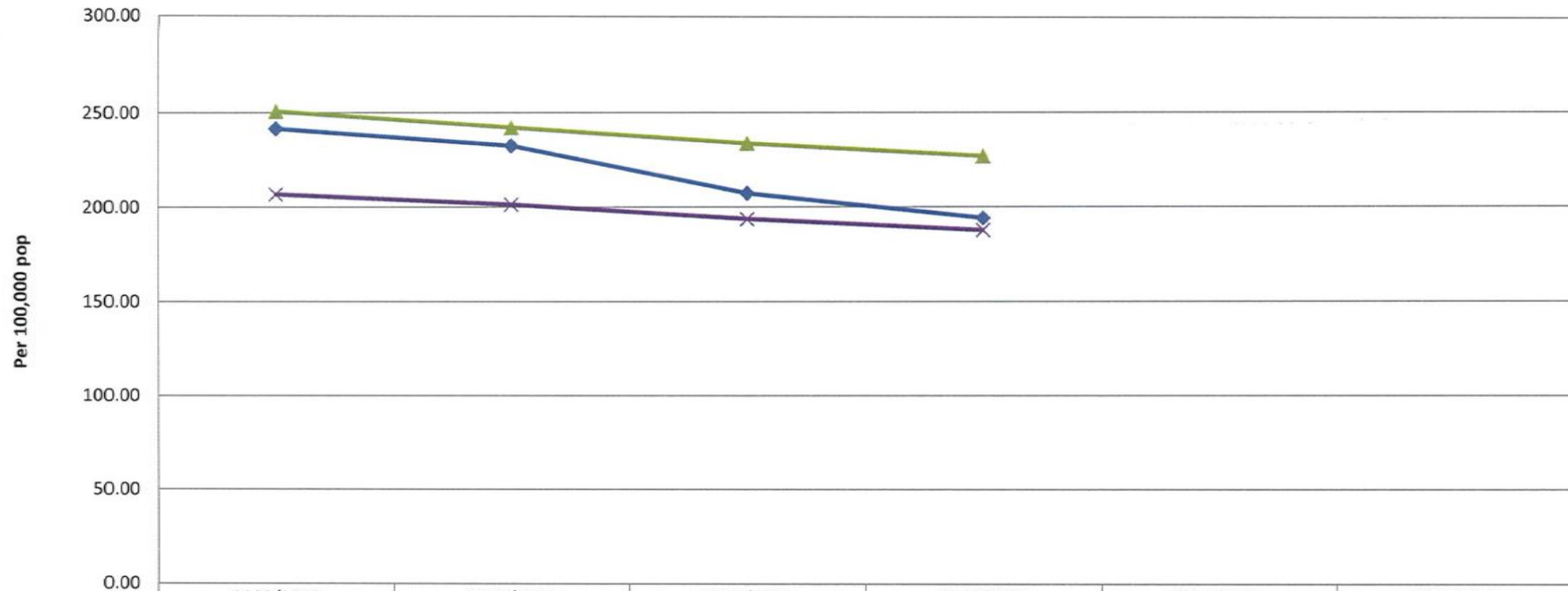


PH 031 (PHOF 0.1ii) Life expectancy at birth (FEMALE) : the average number of years a person would expect to live based on contemporary mortality rates. What's Best: Bigger



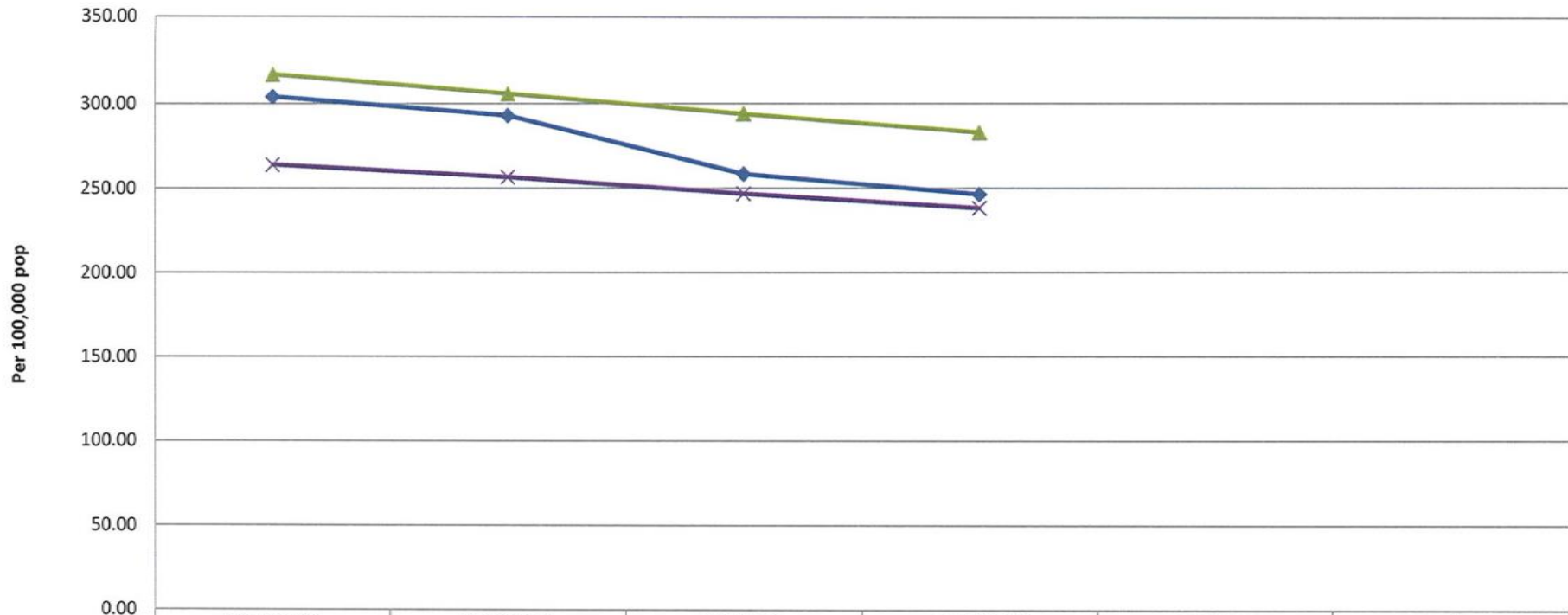
	2009/2010	2010/2011	2011/2012	2012/2013	2013/2014	2014/2015
Actual	80.90	81.60	82.40	82.70		
Target						
North East	80.90	81.10	81.50	81.60		
England	82.30	82.50	82.90	83.00		

**PH 032 (PHOF 4.03) Mortality Rate from causes considered preventable (PERSONS) -
Age-standardised rate of mortality from causes considered preventable per 100,000
population What's Best: Smaller**



	2009/2010	2010/2011	2011/2012	2012/2013	2013/2014	2014/2015
Actual	241.70	232.60	207.40	194.30		
Target						
North East	250.80	242.20	233.70	226.90		
England	206.90	201.50	193.80	187.80		

PH 033 (PHOF 4.03) Mortality Rate from causes considered preventable (MALE) - Age-standardised rate of mortality from causes considered preventable per 100,000 population What's Best: Smaller



	2009/2010	2010/2011	2011/2012	2012/2013	2013/2014	2014/2015
Actual	304.20	293.20	258.60	246.60		
Target						
North East	317.30	305.90	294.20	283.20		
England	264.00	256.70	247.00	238.40		