

Oral Health and Health Services in Darlington

Dr R. Holmes

Department of Public Health NHS County Durham and Darlington



Oral Health

- Local Data
- National Data



Children's Oral Health

- Regular Surveys
- National Protocols
- Change in Consent



Children's Oral Health

**Percentage decay experience 5 year old Children North East
2007/2008**

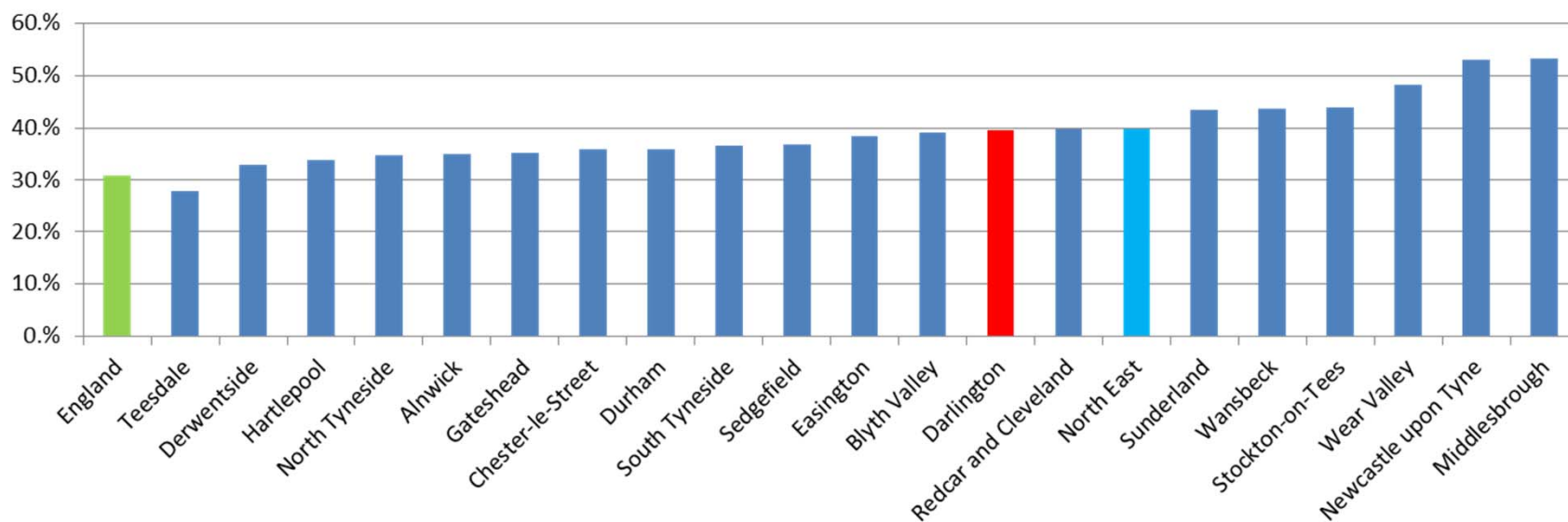
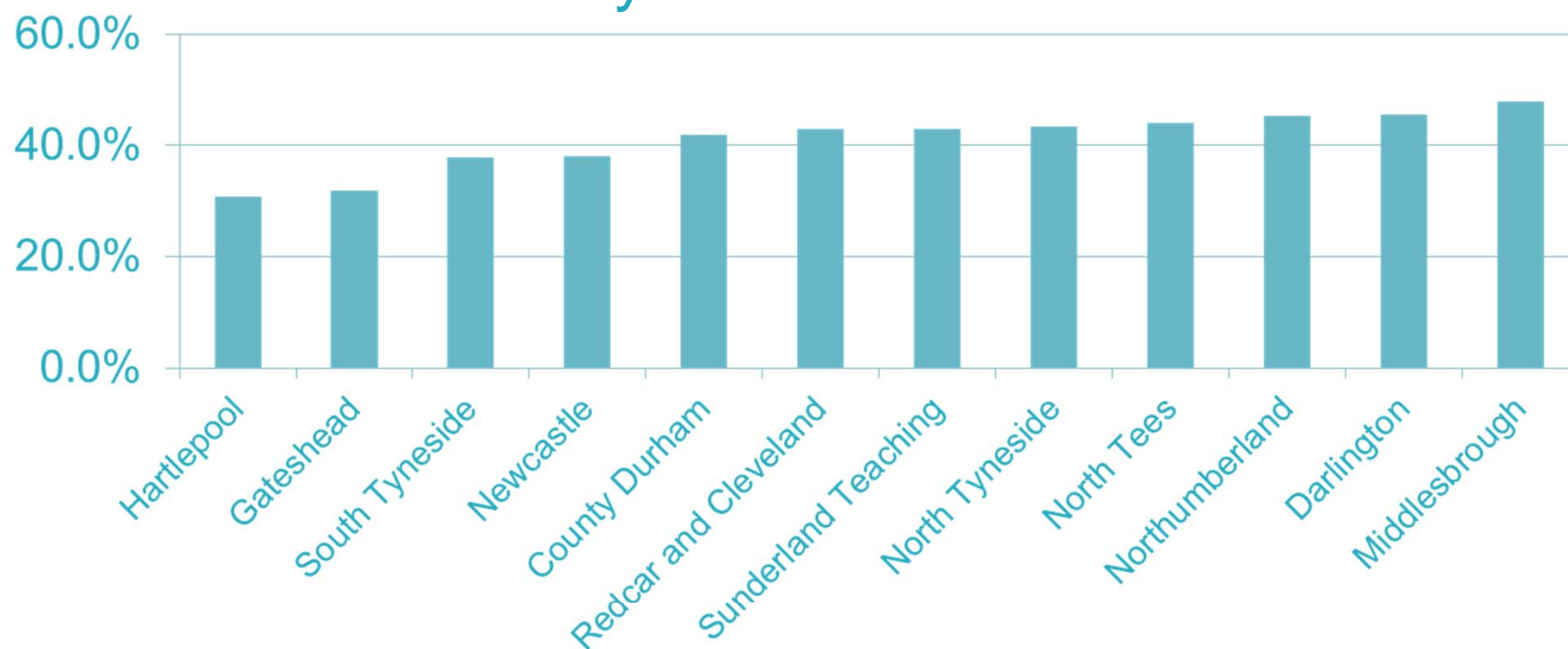


Chart showing Percentage Children decayed teeth at 12 years old 2008/09



National Adult Dental Survey 2009

North East Results

- 82% adults functional dentition 21 teeth
- 53% 18 more sound untreated teeth
- 34% evidence active decay
- 9% often dental pain
- 9% evidence acute dental condition



Access to NHS dental services

- Free for all children
 - Including orthodontic treatment
- Free all students full time education
- Pregnant and Nursing Mothers
- Free for exempt categories of patients



Access to NHS dental services

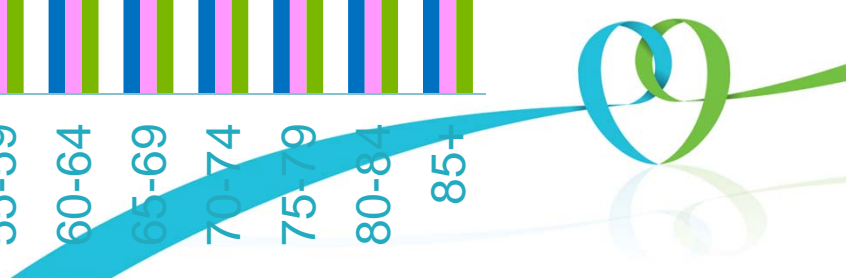
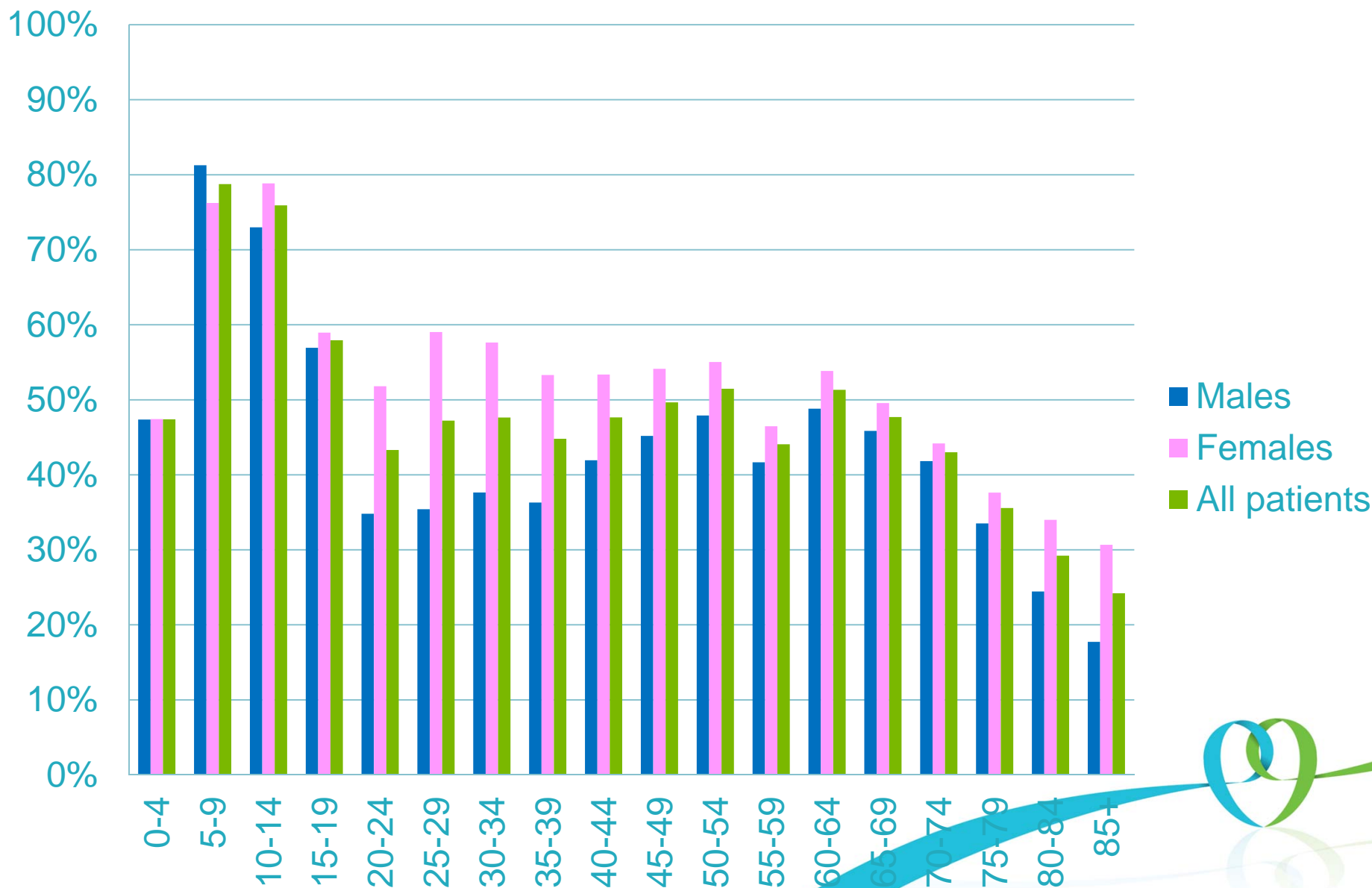
- XX practices accepting new NHS patients(NEPCSA will provide this data)
- Out of hours care
 - Evenings and Weekends
- In hours access dental practices
- Access Portal **PHONE 111**



The proportion of males, females and all residents of Darlington who attend an NHS Dentist in the North East 2010/2011 by 5 year age bands



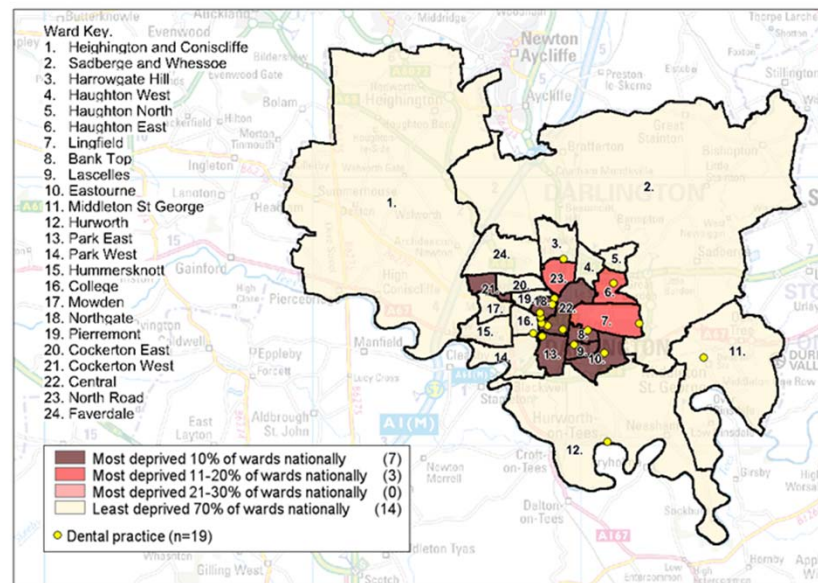
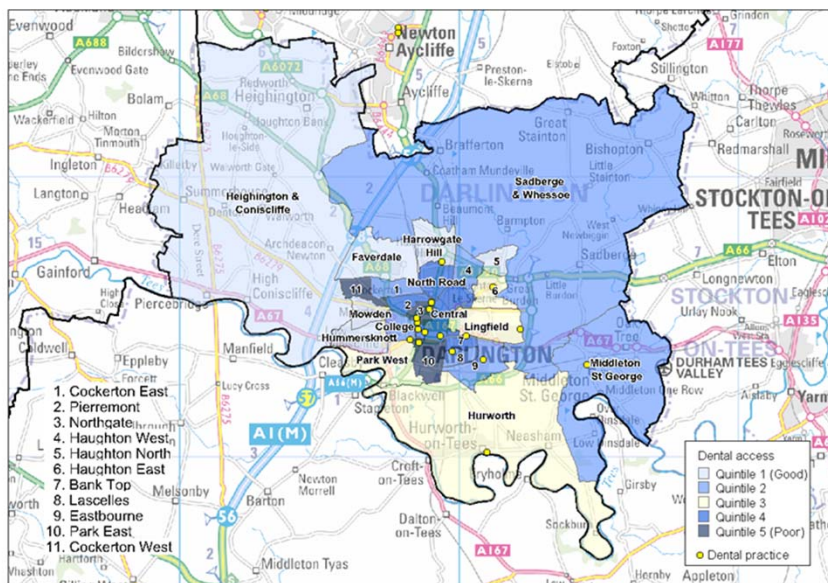
County Durham and Darlington



Correlation between Deprivation and Dental Utilization Darlington

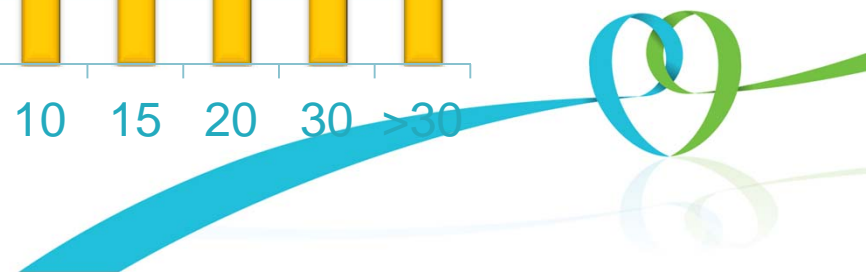
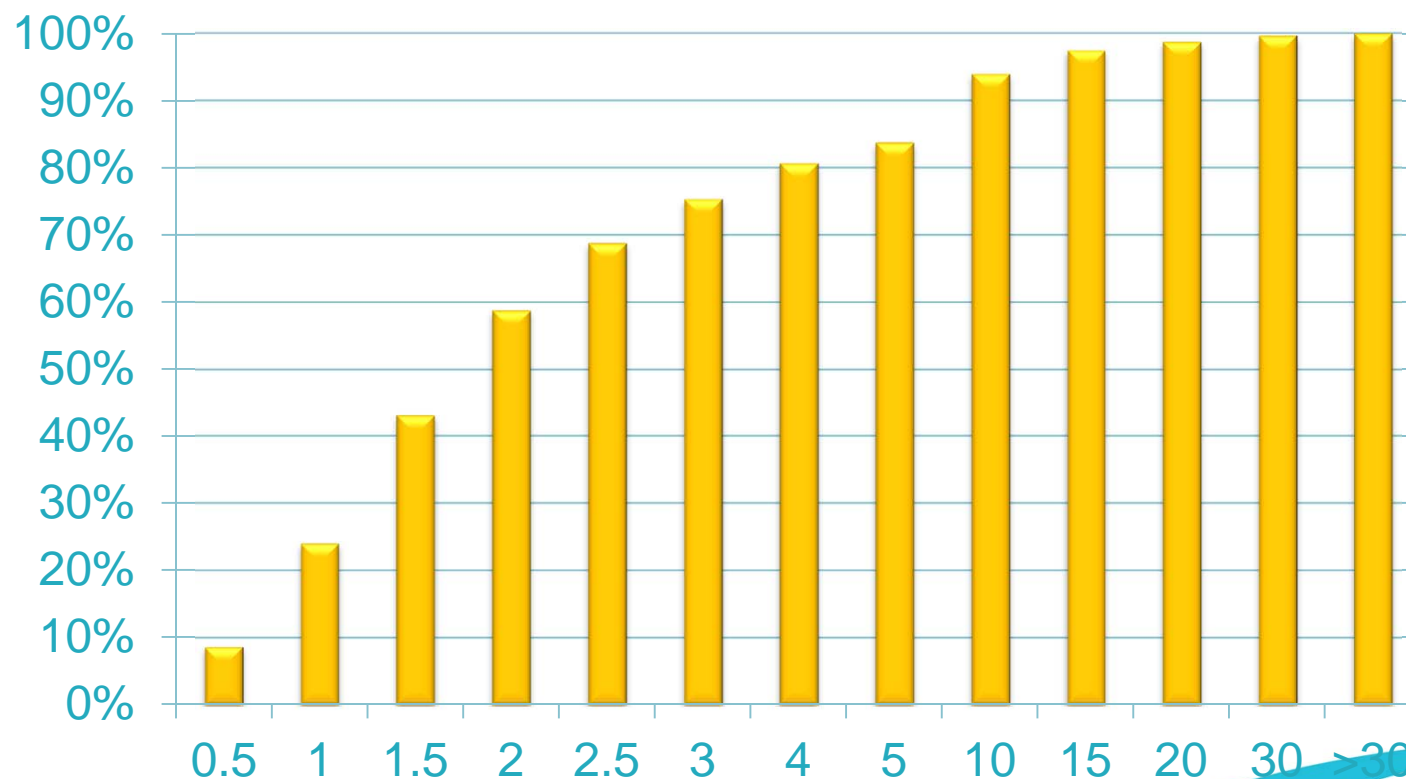


Deprivation and Access



Distance travelled by patients attending Darlington Dentists

Chart showing distance travelled by patients to dental practices in Darlington miles (cumulative percentage)



Where do Darlington patients addend a dentist in the North East



County Durham and Darlington

Area	Number	Percentage
Darlington	45991	91.8%
Sedgefield	1368	2.7%
Stockton-on-Tees	1264	2.5%
Wear Valley	550	1.1%
Middlesbrough	245	0.5%
Teesdale	167	0.3%
Redcar and Cleveland	103	0.2%
Hartlepool	95	0.2%
Durham	89	0.2%
Easington	45	0.1%
Sunderland	40	0.1%
Newcastle upon Tyne	36	0.1%
Gateshead	35	0.1%
Other	60	

Oral Health Promotion Activity Practice

Open events

- marketing
- Promotion of supportive environment



Initiatives

- PCT funds for practices to work out in the community to improve access for children 0 -7
 - Sure start programs
 - Children's Centres
 - Infant schools



Future

- Continue to improve links between practices and local early years community
- Explore extension of water fluoridation



New Commissioning Arrangements from 1 April

- Responsibility of Darlington PCT replaced by County Durham and Tees Valley Local Area Team (LAT) of NHS Commissioning Board
- LAT will commission all dental services
- Accountability through Health and Wellbeing Board
- Local Authorities will have key role





Public Health
England



NHS
Commissioning
Board
*Commission Dental
Services*

Health Needs
Assessment

Health &
Wellbeing
Boards

Local
Authorities



Next steps

- Engagement with the new process
- Develop new joint working
 - NHS Commissioning Board
 - Public Health England
 - Local Authorities

