

APPENDICES

- A. Evidence of new service priorities
- B. Supporting People Strategic Partners
- C. Service review process diagram
- D. Information to support Chapter 4
- E. Bibliography

APPENDIX A

Evidence of New Service Priorities

St Georges Hall	Priority Ranking 1
Reasons for Priority	Accommodation for young homeless is a priority in Homeless strategy
Client Group	Young homeless 16 to 25 (single and couples without children)
No. of Units	11 (including one wheelchair accessible unit)
Financial Requirements	£95,000 pa Supporting People funding required
Service Detail	24-hour accommodation based service for young vulnerable people. To accommodate both single and couples with no children. Priority to be given to care leavers and first time homeless.
Development Status	Capital allocation granted by Housing Corporation. Planning consent approved.
Target for Completion	September 2005

Substance misuse floating support	Priority Ranking 2
Reasons for Priority	Priority carried over from Shadow Strategy due to loss of capital funding
Client Group	Those who have misused drugs and/or alcohol
No. of Units	10 maximum
Financial Requirements	Up to £40,000 pa Supporting People funding
Service Detail	To be provided to tenants in Council, RSL and private accommodation
Development Status	Expressions of interest invited. To be evaluated January 2005
Target for Completion	April 2005

Extra care for older people with dementia	Priority Ranking 3
Reasons for Priority	Link to National Service Framework for people with mental health problems and also Darlington Borough Council's Best Value Review of Mental Health Services.
Client Group	Older people with dementia
No. of Units	14 units
Financial Requirements	£16,000 pa Supporting People funding required. Grant from DoH of £3,348,600 in 2005/06. Contribution from Hanover Housing would be around £550K in 2005/06 and the Housing Authority contribution £302K in 2006/07
Service Detail	Provided in new build wing onto additional, remodelled sheltered housing scheme, which will also provide 4 intermediate care beds
Development Status	This service development is dependent upon the outcome of a bid for the Extra Care Housing Funding from the DoH.
Target for Completion	March 2006

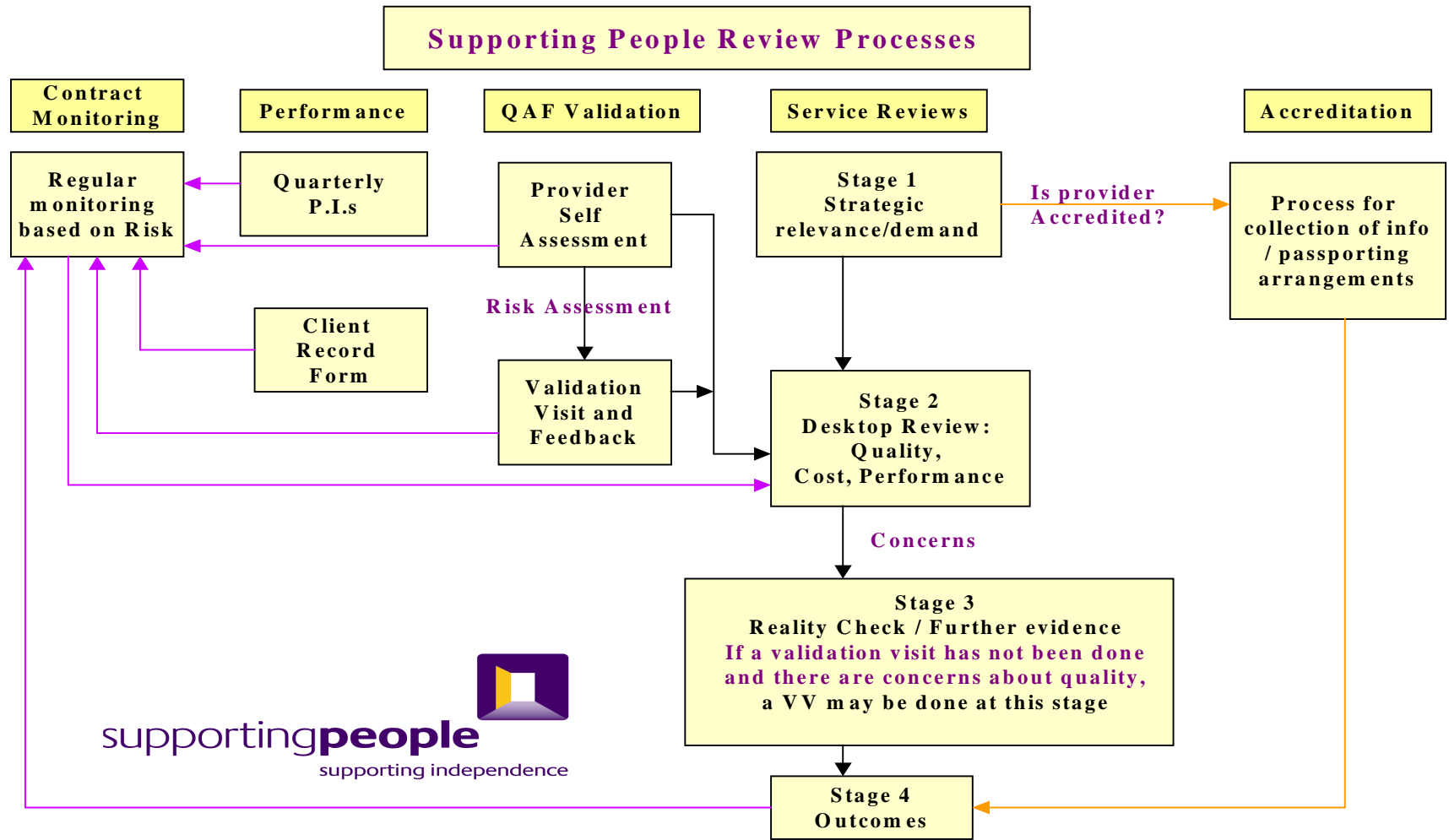
Extra care remodelling	Priority Ranking 4
Reasons for Priority	Link to National Service Framework for older people and the local Older Persons Strategy. This will become priority 3 should the capital bid for the above service be unsuccessful
Client Group	Older people with support needs
No. of Units	Up to 60 units
Financial Requirements	No extra Supporting People funding required. Remodelling to be funded from the Housing Business Plan
Service Detail	Extra care provision in partnership with Social Service within a sheltered housing service
Development Status	The Housing Division has a programme to remodel 4 sheltered housing schemes. This development represents the remaining 2 services, where work is to start on-site
Target for Completion	March 2006

Substance misuse accommodation based service	Priority Ranking 5
Reasons for Priority	Priority carried over from Shadow Strategy due to loss of capital funding
Client Group	Those who have misused drugs and/or alcohol
No. of Units	8 units
Financial Requirements	£78,000 pa Supporting People funding – additional funding of around £159K required from DAAT
Service Detail	Accommodation based service provided in 4 shared houses within the borough of Darlington. Properties provided by Local Authority/RSL
Development Status	Awaiting funding allocation decision from DAAT
Target for Completion	January 2006

APPENDIX B

Supporting People Strategic Partners

<u>Stakeholder</u>	<u>Approving Partners</u>
<u>Social Services</u>	Integrated Learning Disability Team
	Mental Health Team
	Youth Offending Team
	Care at Home Services
	Leaving Care Partnership
<u>Health</u>	Darlington Primary Care Trust
	Durham and Darlington Acute Services Trust
<u>Housing</u>	Housing Division
Probation	Durham Probation Service
Providers	Registered Social landlords Voluntary Organisations
<u>Service users and carers</u>	Tenants and residents, their families and carers
	Darlington Residents Panel
<u>Advocacy Services</u>	Mental After Care Association
<u>Other Stakeholders</u>	The Housing Corporation
	Northern Housing Consortium Ltd



APPENDIX D

Information to Support Chapter 4 – Local Profile

a) Supply Table Profile

Client Group	Levels of Provision			Notes
	Lower	Higher	Actual	
Older People with Support Needs	645	1301	1326	<p>The figure for Darlington is above the top of the range. This reflects the demographics of the borough. However, within this general provision there is limited specific accommodation for frail older people (extra care) or accommodation specifically linked to early hospital discharge or prevention of admission to acute services (intermediate care). To address this gap a 42 bed extra care scheme in was opened in partnership with an RSL in March 2004, and the continued programme to remodel 4 of the Council's existing sheltered schemes to provide extra care, and the development of a new build 12 bed intermediate care scheme. The communal facilities and 14 flats at Dalkeith House, the Council's first extra care scheme were completed in April 2004, with a further Scheme at Oban Court to be completed by December 2004</p> <p>A bid for capital funding has been made to remodel a further sheltered scheme to provide additional units, delivering extra care for older people with mental health problems.</p> <p>The Council has also commenced a programme to upgrade all sheltered housing schemes with telecare technology, enabling them to provide additional support.</p>

Client Group	Levels of Provision			Notes
	Lower	Higher	Actual	
People with Mental Health Problems	36	152	24	The supply is less than the lower end of the range. The majority of these units are provided with low-level support. There is little provision with 24-hour cover, and this is an area where more provision is needed. The Supporting People team is currently working with the Mental Health Local Implementation Group to identify needs.
People with a Learning Disability	18	82	118	The provision is above the higher end of the range. However, the vast majority of the available accommodation is located within shared houses, and options need to be explored to provide self contained accommodation. Additionally there are people currently in 'out of area' long stay hospital accommodation, living with ageing carers or currently living in accommodation that does not meet their needs, who require supported accommodation.
People with a Physical or Sensory Disability	14	95	18	This provision is at the lower end of the range of provision. However, the Councils commitment in recent years to include wheelchair standard accommodation in all new general needs housing developments has resulted in reducing demand for adapted accommodation, as evidenced in the Housing Needs Survey 2003.
Single Homeless	1	73	97	The provision in the borough is above the higher range of the supply profile. However, statistical information from the Homeless Strategy indicates that there remains an under-provision for this client group. The numbers of homeless who are re-housed and subsequently leave the accommodation within 12 months further underlines the need for supported accommodation. A new hostel providing 11 short stay beds for homeless young single people and couples, is currently being developed, and will be opened in March 2005.
People with Alcohol	7	11	0	There is currently no provision within the borough for this client group range in the profile. The Supporting People team have been working with the DAAT to develop a model of care which will provide a range of

Client Group	Levels of Provision			Notes
	Lower	Higher	Actual	
Problems				services from hostel to shared houses, through to floating support for this group
People with Drug Problems	3	28	0	See above.
Offender or those at Risk of Offending	2	6	13	Provision for offenders is above the predicted range, suggesting that this group is over provided for in the borough. However, data from the Probation Service indicates that this level of provision is required.
Young People at Risk or Leaving Care	13	32	3	There is currently insufficient designated accommodation for this client group. The Supporting People Team is working with colleagues in Social Services to improve access for care leavers to more generic services.
Women at Risk of Domestic Violence	2	10	8	Provision of supported accommodation falls slightly below the higher range of the supply profile. An 8 bed Refuge opened in March 2003, to replace the existing building. Although the design can be used to accommodate more women in exceptional circumstances, data indicates that there is a high demand for this service. Local needs research indicates that a floating support service is required and will also relieve pressure on the Refuge.
People with HIV/AIDS	4	91	0	There is currently no specific supported accommodation for this client group. The data we have indicates that this client group gravitates to Newcastle where the specialist treatment centre is located. The needs of this group may therefore be best met through cross authority provision. Further work is being undertaken around the needs of this group.

Client Group	Levels of Provision			Notes
	Lower	Higher	Actual	
Homeless Families in need of support	1	15	6	There is currently no specific supported accommodation for homeless families; however the Tenancy Support Scheme caters for homeless families as a secondary client group. Work is also being undertaken with a RSL to develop a number of supported units for homeless families in need of support. However this is subject to revenue funding being available. A 6 unit, 24 hour supported scheme for teenage parents opened in March 2004
Refugees	0	2	0	There are no accommodation based Supporting People funded services for refugees in Darlington. Traditionally asylum seekers and refugees have not arrived in Darlington. However we are actively involved in the National Asylum Seekers Support Scheme and currently support asylum seekers in 20 units of Council accommodation. Further work is required in this area to identify future support needs.
Generic	0	2	15	There are 15 units of generic supported housing in the Borough that provide services to a range of different client groups.
Totals	746	1900	1634	

Floating Support Services

Client Group	Levels of Provision			Notes
	Lower	Higher	Actual	
Older People with Support Needs	8	170	1269	A large amount of support is delivered through the 'Lifeline' & community alarm service. This is a valued service, with an additional 237 clients taking up the service in 2002/2003 demonstrating continuing demand. There is also a Home support service providing a more intensive support service for older people.

Client Group	Levels of Provision			Notes
	Lower	Higher	Actual	
People with Mental Health Problems	25	36	20	Darlington has significantly lower levels of provision than the lower level of the ODPM profile. This is a clear area where more floating support services are needed for people with mental health problems. An accommodation sub group is currently undertaking a study of mental health provision, with the aim of increasing the number of services.
People with Learning Disabilities	2	7	9	The current level of provision falls above the supply profile range. The service is generally well used and adds to the range of options for clients with a learning disability.
People with a Physical Disability	0	1	0	There is no specific floating support provision for people with a physical disability. This area needs further investigation. However, low-level support is provided to people with physical disabilities through the various community alarm services that operate in the borough.
Single Homeless	1	49	57	The provision in the borough is above the higher end of the supply profile. Statistical information from Housing Services indicates that there remains an under-provision for this client group. The numbers of homeless who are re-housed and subsequently leave the accommodation within 12 months further underlines the need for supported accommodation.
People with Alcohol Problems	0	2	0	There is currently no provision within the borough for this client group range in the profile. The Supporting People team has been working with the DAAT to develop a model of care which will provide a range of services from hostel to shared houses, through to floating support for this group.
People with Drug Problems	1	2	0	As above
Offenders or those at risk of	1	73	10	Floating support provision for this client group falls at the lower end of the range. Data supplied by the Probation Service indicated that there is a need

Client Group	Levels of Provision			Notes
	Lower	Higher	Actual	
offending				for an increase in services in this area.
Young People at risk	3	30	0	There is no floating support provision for this client group. The Supporting People team is working with the support provider to integrate this service more closely to Housing Service's own scheme.
Women at risk of Domestic Violence	0	1	0	There is a strong and effective Domestic Violence Forum, which has prioritised outreach support for victims of domestic violence. This is an area requiring further investigation. Outreach Support is currently available but not funded through Supporting People.
People with HIV/AIDS	2	26	0	There is no provision for this group at present. The research commissioned by the SP team will establish the level of need for this client group.
Homeless Families	0	2	8	A recently developed 8-unit floating support service for teenage parents has introduced some services to this client group. A recently developed floating support service for teenage parents has introduced some services to this client group. However are no generic schemes for homeless families in the borough.
Refugees	0	1	0	There are no floating Supporting People funded services for refugees in Darlington. There are indications of a need for support services for this client group. Research work also identifies a level of need. The authority does take a flexible approach in allowing asylum seekers access to assistance established as part of the NECASS contract.
Generic	0*	0*	8	
HIA	0*	0*	72	The HIA service in Darlington was transferred to a new managing agent in 2003, and is continuing to increase the range of services which it provides.
Total	43	400	1453	Floating support provision is at the low end of the range. However, these services are currently being developed in the Borough. The areas for increased provision have been highlighted above.

Table 1

Homeless households accommodated ⁽¹⁾ by local authorities during 2002/03:
Analysis by household type, gender and ethnicity of household

	Couple with dependent children	Lone parent household with dependent children		One parent household		All other household groups	Total	Of which: Black & minority ethnic
		Male applicant	Female applicant	Male Applicant	Female Applicant			
North East	570	220	2,920	1,270	1,630	310	6,910	180
North West	1,620	540	6,200	2,850	2,940	1,030	15,180	1,840
Yorkshire & Humberside	1,340	340	4,100	3,660	2,880	2,670	14,980	2,900
East Midlands	1,100	310	3,630	1,160	1,490	580	8,290	800
West Midlands	2,010	520	6,240	2,240	2,750	1,170	14,930	3,460
Eastern	2,120	440	3,350	1,930	1,990	1,300	11,110	1,020
London	6,420	1,050	9,610	5,730	6,060	2,560	31,420	15,880
South East	2,520	580	4,840	2,440	2,630	1,600	14,600	980
South West	1,940	430	4,150	2,500	2,530	1,200	12,740	320
England	19,620	4,430	45,030	23,770	24,890	12,410	130,150	27,370

Notes:

⁽¹⁾ Households eligible for assistance, unintentionally homeless and falling within a priority need category.

"One person household – Female Applicant" includes single, expectant mothers.

"All other households" includes childless couples with an expectant mother

Office of the Deputy Prime Minister

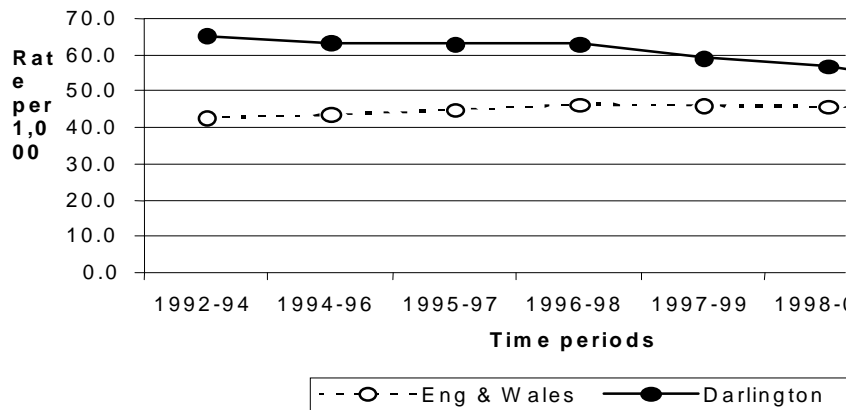
ODPM Housing Activity Returns (P1E) quarterly and P1E(AS) (annual) July 2004

Table 2 Homeless Applicant Households

Number of Children	1999 - 2000		2000 - 2001		2001 - 2002	
	N	%	N	%	N	%
None	427	59	375	59	388	57.5
1	119	16.5	114	18	142	21
2	112	15.5	86	13	94	14
3 or more	67	9	64	10	50	7.5
Total	725	100	639	100	674	100

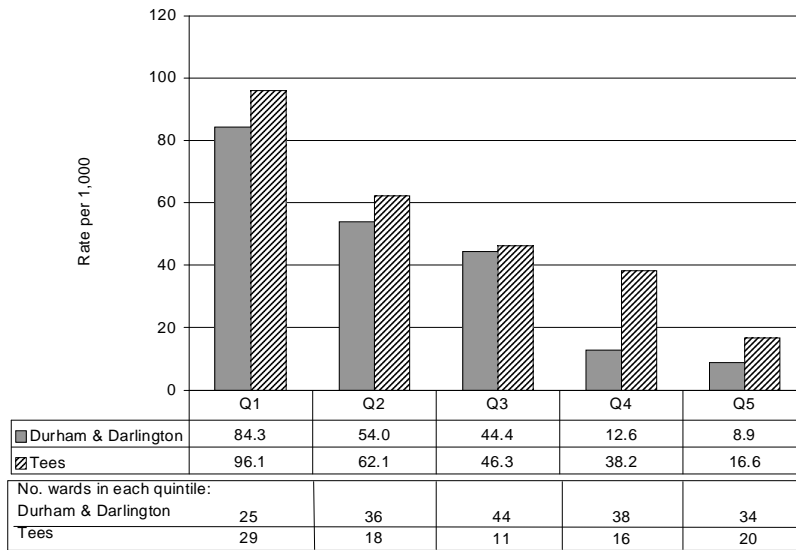
Number of Children	2002 - 2003		2003 - 2004	
	N	%	N	%
None	639	65	511	56
1	130	13	204	22
2	123	12	123	14
3 or more	94	10	75	8
Total	986	100	913	100

Table 3 Darlington Teenage Conception Rates



Taken from Health Check 2003 Darlington

Table 4 Darlington Teenage Conception Rates



Taken from Health Check 2003 Darlington

APPENDICES

Table 5

Under 18 Conception Data for top-tier Local Authorities (LAD1), 1998-2002

NB. Rates are per 1000 female population aged 15-17.

Counts for City of London and Isles of Scilly have been combined with those for Hackney and Cornwall respectively.

	1998		1999		2000		2001*		2002**	
	Number	Rate	Number	Rate	Number	Rate	Number	Rate	Number	Rate
NORTH WEST	6,457	50.3	6,283	48.8	6,206	47.5	6,020	45.2	6,126	45.2
NORTH EAST	2,731	56.5	2,666	55.3	2,478	50.8	2,389	48.2	2,554	51.0
YORKSHIRE AND THE HUMBER	4,806	53.1	4,617	51.0	4,406	47.9	4,434	47.1	4,520	47.0
EAST MIDLANDS	3,632	48.8	3,219	43.5	3,198	42.8	3,076	40.2	3,177	40.4
WEST MIDLANDS	5,085	51.7	4,838	49.3	4,862	49.0	4,759	47.2	4,842	46.8
EAST	3,592	37.9	3,420	36.4	3,331	35.1	3,308	34.1	3,424	34.6
LONDON	6,042	51.1	5,975	50.5	6,041	50.4	6,201	50.3	6,512	52.0
SOUTH EAST	5,384	37.8	5,058	35.9	5,085	35.9	5,022	35.0	5,030	34.4
SOUTH WEST	3,360	39.4	3,171	37.5	3,092	36.3	3,230	37.1	3,156	35.4
England	41,089	46.6	39,247	44.8	38,699	43.6	38,439	42.5	39,350	42.6

(Source: Teenage Pregnancy Unit)

http://www.dfes.gov.uk/teenagepregnancy/dsp_showDoc.cfm?FileName=LA%20u18%20conceptions%201998%2D02%20%28Nov%202004%20update%29%2Exls

APPENDICES

Table 6 Extract from Bi-annual survey of Gypsy/Traveller Sites, January 2003

	Total number of Pitches	Residential Pitches	Transit Pitches	Caravan Capacity	Date Site Opened
Darlington U A	65	65	0	130	
Honeypot Lane, DL3 4DJ	45	45	0	90	1975
Neasham Road, DL1 4DJ	20	20	0	40	1975

Table 7 Total number of Gypsy families recorded in Darlington over the last five recording periods

Date of count	Number of Gypsy Families
July 2001	38
January 2002	53
July 2002	53
January 2003	62
July 2003	56
January 2004	50
July 2004	42

APPENDICES

Table 8 Range of needs identified within women staying at the refuge and their age groupings

	16-20	21-30	31-40	41-50	51-60	60+	Total
Care Leaver		1					1
Drug and or Alcohol problems	1	6	2				9
Refugee/Asylum Seeker							
HIV or AIDS							
Older Person					1		1
Physical and/or Sensory Disability							
Learning Disability							
Mental Health Problems		19	7	2	1		29
Offender		1	2		1		4
BME		2					2
Armed Forces		1					1
Traveller/Gypsy		1					1
Lesbian/Trans Gender							
Worked/ing in sex industry							
None of the above	1	19	13	7			40

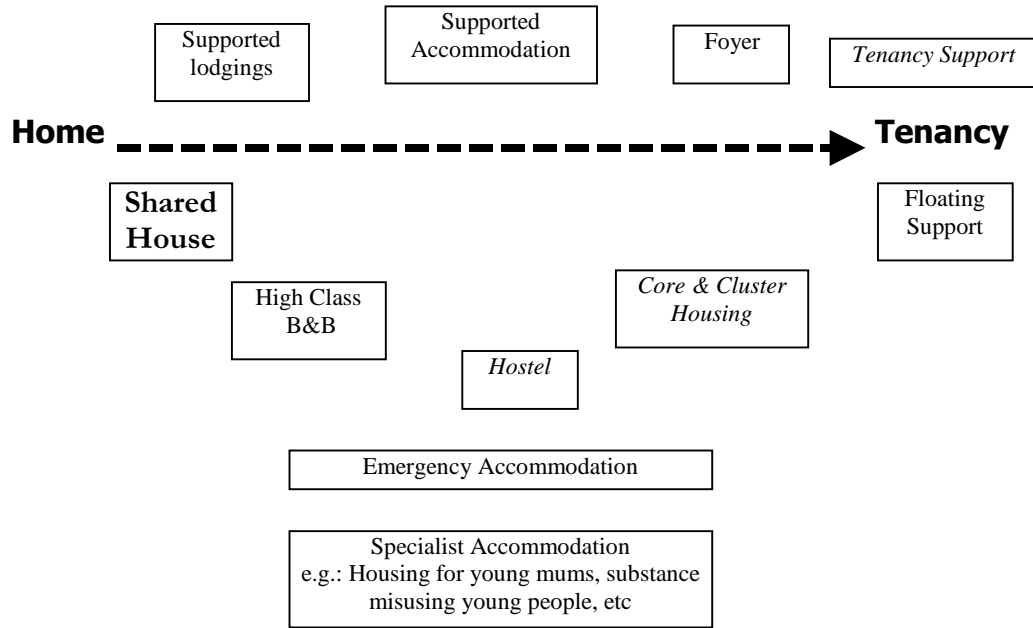
Table 9

Complex Needs			
Drug/Alcohol Problems and Mental Health Problems		3	
Mental Health Problems and Married to Armed Forces Personnel		1	
Drug/Alcohol Problems and Care Leaver		1	
Mental Health Problems, Ex Offender and Drug/Alcohol Problems		2	
Mental Health Problems, Ex Offender and Older Person		1	
BME and Asylum Seeker		1	
Child protection Issues (Known to Social Service's Department)	40	Total number of children	121

Information in the above tables was collected from the admission sheets and covers the period 13th May 2003 - 23rd January 2004 (76 women in total). Some of the women included within the survey only stayed at the refuge for a short period of time, sometimes only one night and therefore a full picture of their needs is not obtained and recorded on the admission sheet.

APPENDICES

Table 10 Spectrum of support a young person may travel through towards independent living:



APPENDICES

Table 11 Tees Valley and Durham Designated Services

*Both the Women's Refuge and services for Offenders have been designated by O.D.P.M as cross authority services in the recently published Supporting People designated service list.

Authority	Service	Client Group	No. of units	Contract value	Review Date
Darlington	Women's Refuge	*Domestic Violence	8	£93,621	Jan 2005
Darlington	Hostel	*Offenders	6	£80,493	April 2004
Darlington	Accomm service	Offenders	6	£59,260	April 2004
Durham	Women's Refuge	Domestic Violence	5	£55,137	July 2004
	Women's Refuge	Women's Refuge	6	£109,428	June 2004
	Women's Refuge	Women's Refuge	6	£210,694	April 2004
	Women's Refuge	Domestic Violence	6	£112,997	April 2004
Hartlepool	Women's Refuge	Domestic Violence	6	£126,619	December 2003
Middlesborough	Women's Refuge	Domestic Violence	11	£98,449	Jan 2006
Redcar & Cleveland	Women's Refuge	Domestic Violence	8	£163,904	Jan 2004
Stockton	Women's Refuge	Domestic Violence	7	£124,368	Oct 2003
Totals			75	£1234.97	

Table 12 Cross Authority Services

Schemes that have been identified by Durham and District Supporting people partnership as being Cross Authority services

Provider	Client group	No of Units
Norcare	Ex -offenders	12
Norcare	Alcohol misuse	8
North East Direct Access	Homeless People	63

APPENDICES

BIBLIOGRAPHY

APPENDIX E

- 1) 4Sight Newsletter for Visually Impaired People in Darlington
Issue 2 – Autumn 2003
- 2) Government Office for the North East
Regional Statement of Priorities and Consultation– 9 February to 26 March
2004
- 3) Darlington NHS Primary Care Trust
North East, Yorkshire and Humber NIMHE Regional Development Centre
Draft Strategic Direction and Work Programme 2004/05
- 4) City of Salford Council Supporting People Team and the Salford University
University Housing and Urban Studies Unit (2003)
Moving Beyond One Size Fits All: Information, consultation and
participation: involving BME groups in Supporting People
- 5) ODPM (2003)
Focusing on the Future
- 6) ODPM (August 2003)
A practice Manual for Validation Visits
- 7) ODPM (September 2003)
Supporting People Guide to Accommodation and Support Options for
Homeless Households
- 8) University of Teesside School of Social Services and Law
Blackman T and Anderson J (2002) Report from the Centre for Social and
Policy Research Urban Lab –
Supporting People Needs Analysis
- 9) Social Affairs and Health Scrutiny Committee
Darlington Borough Council (13 October 2003)
Housing Needs Survey Report
- 10) Social Affairs and Health Scrutiny Committee
Accommodation Issues for Young People
- 11) Department of Health (September 2003)
Personal Social Services Physically Disabled and Sensory Impaired User
Experience Survey : What needs doing for 2003-2004
- 12) Department of Health Factsheet No.1 (28 July 2003)
Moyra Riseborough and Peter Fletcher
Housing Learning and Improvement Network
Extra Care Housing What is it?
- 13) Department of Health Factsheet No.2 (28 July 2003)
Moyra Riseborough and Peter Fletcher
Housing Learning and Improvement Network
Commissioning and Funding Extra Care Housing
- 14) Department of Health - Housing with Care Matters
- 15) ODPM Supporting People Homeless Directorate
Guide to Accommodation and Support Options for Homeless Households

APPENDICES

- 16) Home Office (June 2003)
Domestic Violence: Practice Guidance Reader and Resource Directory for
Darlington and County Durham
- 17) Darlington DAAT (June 2003)
Substance Misuse, Housing Draft Strategy
- 18) ODPM
National Framework for Older People
- 19) Darlington Borough Council (2002)
Darlington's Housing Strategy: People at Home
- 20) ODPM (2000)
Quality and Choice for Older People – A Strategic Framework for Older
People's Housing
- 21) Darlington Borough Council
Growing Older Living Darlington – An Integrated Strategy for Older People
- 22) The North East Housing Board (July 2003)
North East Housing Strategy
- 23) Darlington Borough Council Social Affairs and Health Scrutiny Committee
(October 2003)
Delayed Transfers of Care
- 24) Darlington Borough Council (July 2003 – June 2006)
Consultation Draft Homeless Review Strategy and Action Plan
- 25) Darlington Youth Offending and Community Safety Service (2002)
Darlington Youth Justice Plan 2002 – 2005
- 26) Dr Kesia Reeve for Leeds City Council (June 2002)
Closed Doors: The Housing Options and Needs of Mentally Disordered
Offenders
- 27) The National Housing Federation (Issue 23 2003)
Supporting People News – The Monthly Newsletter from the Supporting
People
- 28) Presentation by Helen M Cash (October 2003)
Supporting People: Action for the Future – Offenders and People at Risk of
Offending
- 29) National Probation Service (2003)
North east Region – Probation Accommodation Grants Scheme Quarterly
Monitoring Returns
- 30) Social Exclusion Unit (July 2002)
Reducing re offending by ex-prisoners – Summary Report
- 31) Darlington Youth Offending and Community Safety Service (2002)
Darlington Crime and Disorder Reduction Strategy 2002-2005
- 32) Helen M Cash (1999)
National Probation Service for England and Wales 2001
Housing Needs Assessment Guidance
- 33) Care and Repair England (October 2003)
Should I Stay or Should I Go?

APPENDICES

- 34) Developing Housing Options Services for Older People
Darlington Borough Council (2002)
Supported Accommodation Strategy
- 35) National Probation Service North east Region (2003)
Supporting People Strategies: Prison Service and Probation Contribution to
the Five Year Strategy: Housing Support for Offenders: A Regional and
Local Perspective
- 36) Durham University (1997)
Mentally Disordered Offenders Deinstitutionalisation, Diversion and Social
Exclusion Outline of ERSC funded studentship (1997-2000)
- 37) HMIP Circular (31 October 2001)
Resettlement of Offenders Needs Strategic Approach, Say Chief Inspectors
of
Prison and Probation
- 38) Home Office Findings Number 200 (2003)
The Resettlement of Short-Term Prisoners: An Evaluation of Seven
Pathfinder
Programmes
- 39) John Hughes Housing Studies Association Spring Conference
Housing and Support 2nd and 3rd April 2003
Supporting People, Offenders and Communities
- 40) Joseph Rowntree Research Findings Summary October 1999
Current Practice in Housing Sex Offenders
- 41) Joseph Rowntree Research Findings Summary April 1996
The Housing Needs of Ex-Prisoners
- 42) Joseph Rowntree Research Findings Summary February 1995
Supported Accommodation for Ex-Offenders: Identifying Effective Practice
- 43) Joseph Rowntree Foundation 2003
Supporting People: Real Change
Planning Housing and Support for Marginalised Groups
- 44) Darlington Youth Offending and Community Safety Service
Darlington Youth Justice Plan
Update 2003 - 2004
- 45) Durham County Council 2000
Joint Community Care Investment Plan: For Mental Health Services for
Adults in County Durham 2000 - 2003
- 46) ODPM December 2002
Supporting People: Guide to Accommodation and Support Options for
Households Experiencing Domestic Violence
- 47) ODPM June 2003
Safety and Justice: The Governments Proposals on Domestic Violence
- 48) ODPM December 2002
Supporting People Handy Guide: Addressing Domestic Violence in the
Supporting People Programme

APPENDICES

- 49) ODPM Housing Research Summary No.146 December 2002
The Provision of Accommodation and Support for Households Experiencing Domestic Violence in England
- 50) Pat Craven 1999
The Freedom Programme
- 51) ODPM DOH Housing Corporation Peter Fletcher Associates
Preparing Older People's Strategies: Linking housing to health, social care and other local strategies
- 52) SITRA Bulletin November 2003
National Alcohol Strategy
- 53) Darlington Borough Council November 2003
Extra Care Housing at Rosemary Court, Darlington– Bid
- 54) Reducing Domestic Violence.....What Works? Accommodation Provision January 2000
Crime Reduction Research Series D Levinson, London Research Centre and N Harwin, Womens Aid Federation, England, Policing and Reducing Crime Unit
- 55) Darlington Borough Council 2002
Supporting People Shadow Strategy 2002
- 56) Family Help Darlington
Annual Report
- 57) Daniel Howard and Olivia Christopherson 27 November 2003
Statistics of Mentally Disordered Offenders 2002
England and Wales
- 58) Older People in Deprived Neighbourhoods: Social Exclusion and Quality of Life in Old Age
- 59) Social Affairs and Health Scrutiny Committee December 2003
Council Wide Domestic Violence Policy – Progress Report
- 60) Bed and Breakfast Newsletter
- 61) H M Prison Service
Provision of Drug and Substance Misuse Services
- 62) DTLR
Tackling Drug Use in Rented Housing – A Good Practice Guide
- 63) Department of Health
Valuing People: A New Strategy for Learning Disability for the 21st Century
- 64) Sue Everton Tackling Teenage Pregnancy Coordinator County Durham and Darlington Health Authority
Helen Armstrong Service Development Manager Darlington Social Services Department
Darlington Local Teenage Pregnancy Strategy
- 65) Social Affairs and Health Scrutiny Committee
Development Plans for Domiciliary Care in Darlington

APPENDICES

- 66) Foundations – The National Coordinating Body for Home Improvement Agencies
- 67) The Foundation for People with Learning Disabilities
Planning for Tomorrow: Report on the findings of a survey of Learning Disability
Partnership Boards about meeting the needs of older family carers
- 68) ODPM Pat Niner Centre for Urban and Regional Studies University of Birmingham July 2003
Local Authority Gypsy/Traveler Sites in England
- 69) Health Improvement and Modernisation Plan for County Durham and Darlington
2002 - 2005
- 70) The Terrance Higgins Trust 2002
HIV Facts and Figures
- 71) Department of Health 2001
Better Provision, Better Services, Better Sexual Health
The national strategy for health and HIV
- 72) The Department of Health 2003
Government Response to the Health Select Committee's Third Report of Session
2002 – 2003 Sexual Health
- 73) The Kubernesis Partnership 2003
Family Help: Annual report and accounts for the year ended 31 March 2003
- 74) Department of Work and Pensions 2003
HB/CTB A40/2003 Housing Benefit and Council Tax Benefit Circular
- 75) Peter Fletcher Associates
Caring for our own – and others who live in our communities: A supported housing strategy for Liverpool
- 76) Darlington Borough Council 2003
Gypsy Site Refurbishment Grant Bid for Honeypot Lane Caravan Site 2003/04
- 77) Darlington Borough Council 2004
Social Inclusion Strategy for Darlington (Draft)
- 78) Thandi M 2003 Darlington Borough Council
Researching Black and Minority Ethnic Communities in Darlington– Education Training and Employment
- 79) Kesia Reeve March 2002 Leeds City Council
"There was a good reason for doing the things that I did" : The housing and support needs of young people with 'chaotic lifestyles'
- 80) The Joseph Rowntree Foundation October 2003
Factors that influence young people leaving care

APPENDICES

- 81) Pam Barmby April 2003 Darlington Borough Council Social Services Department Youth Offending and Community Safety Team
A Community Cohesion Initiative for Darlington Borough Council: Baseline Assessment of Perceptions and needs amongst Travelers and Gypsies in Darlington
- 82) Voices (January 2004) Darlington Action Networks
The Way Forward Final Report
- 83) Warden Services Customer Satisfaction Survey 2003-04
- 84) Eynon C and Reilly M 2003
Health Check 2003: Darlington PCT
- 85) Speech Stephen Ladyman MP Under Secretary of State for Community
Hanover Housing Association Parliamentary Seminar 19 January 2004
Extra Care - Extra Choice.
- 86) National Alcohol Harm Reduction Strategy
- 87) Holloway K and Bennett T 2004 Drug use and offending: The results of the
first two years of the NEW-ADAM programme The Home Office
- 88) Tackling Drugs 2002 Updated National Drug Strategy 2002
- 89) The Commission for Racial Equality 2004 'Gypsies and Travellers: A
Strategy for the CRE, 2004-2007' The Commission for Racial Equality.
- 90) Government Office North East Drugs Team 2004 Identifying unmet needs
in Housing and Support provision for substance misusers in the North East.
- 91) Government Office North East Drugs Team 2004 Good Practice Guidance:
Housing and Support provision for substance misusers in the North East.
- 92) National Probation Service for England and Wales, Annual Plan. Bold
Steps: Objectives and Targets 2004/05.
- 93) HM Government, The Government's Annual Report on Learning Disability
2004 Valuing People: Moving Forward Together.
(Melyn Group Foundation From Care to Where. October 2004)
- 94) DoH Better Health in Old Age- 2004
- 95) County Durham and Tees Valley SHA- Mental Health and Specialist
Learning Disability Review- Brain Injury 30/09/04