



Carbon Management,  
Climate Change, Fuel Poverty  
& Green Economy

Elizabeth Goodchild  
Green Economy Officer

# Contents

## **Carbon Management**

- Why the Council manage Carbon emissions from our operations
- Carbon Management Plan and Carbon Saving Progress
- The Future of Carbon Management

## **Climate Change**

- Our commitments towards a Low Carbon Borough
- Climate Change progress

## **Fuel Poverty**

- Fuel Poverty in the Borough
- What we are doing to tackle Fuel Poverty

## **Green Economy**

- The growing Green Economy
- What needs to be done to support the sector

## **Questions**

- Opportunity for comments/ questions



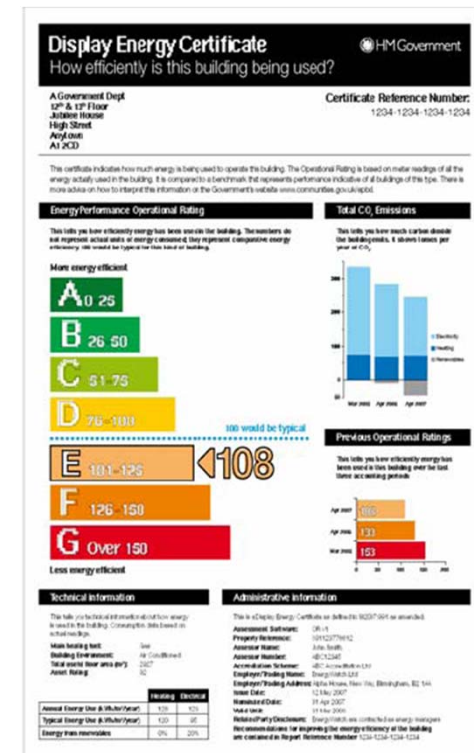
# Background – Our Carbon Reduction Commitments

- NI 185 – Carbon emissions from Council operations
- NI 186 – Per capita carbon emissions for Borough
- NI 188 – Adapting to Climate Change

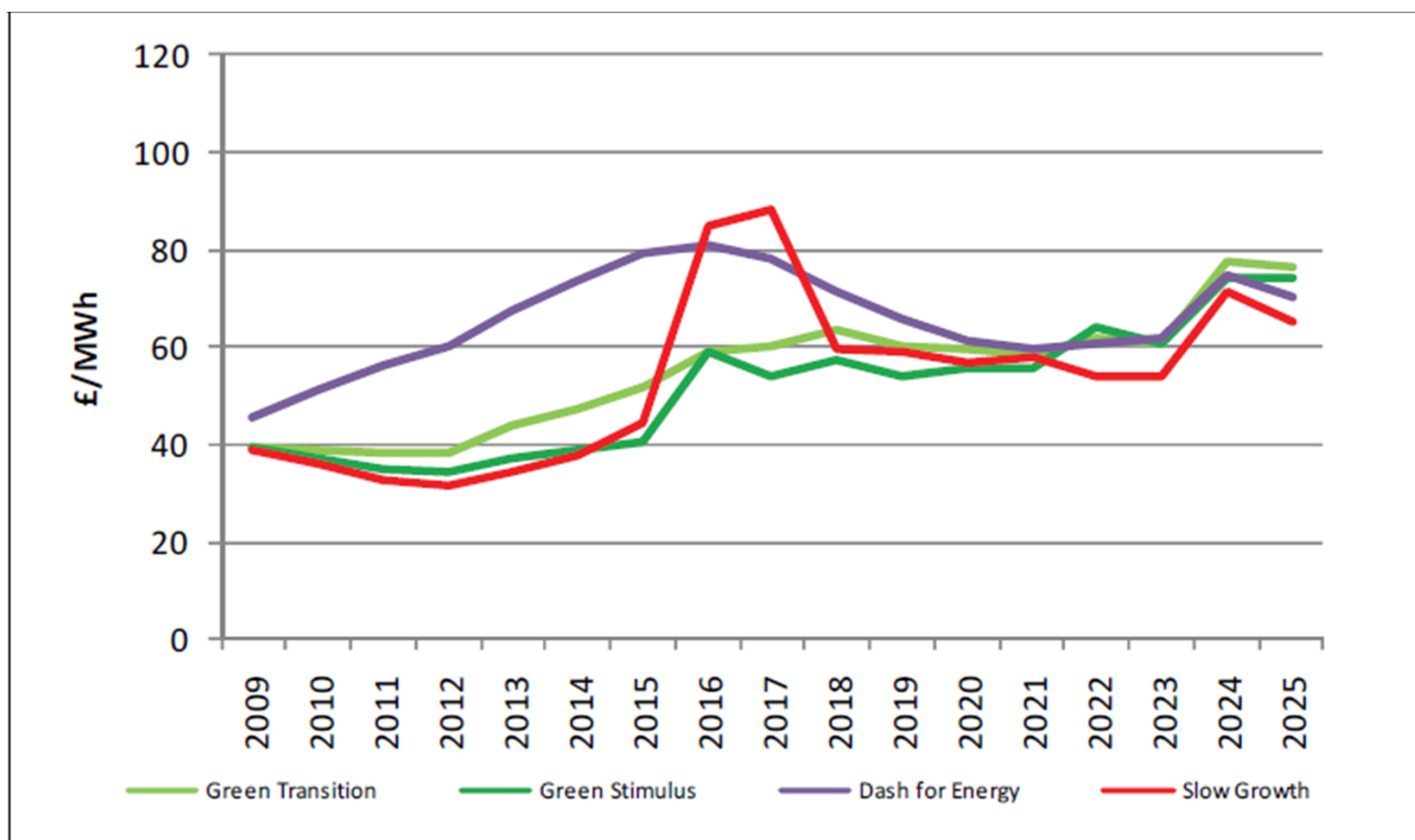
Comprehensive Area Assessment – Resource Use

Energy Performance of Buildings Directive-  
Display Energy Certificates in Public Buildings

£12/T CO<sub>2</sub>– Carbon Reduction Commitment (CRC)



# Background - Rising Energy Costs



Projected Electricity Costs, Ofgem Project Discovery (2009)



# Background – Carbon Management Plan (CMP)



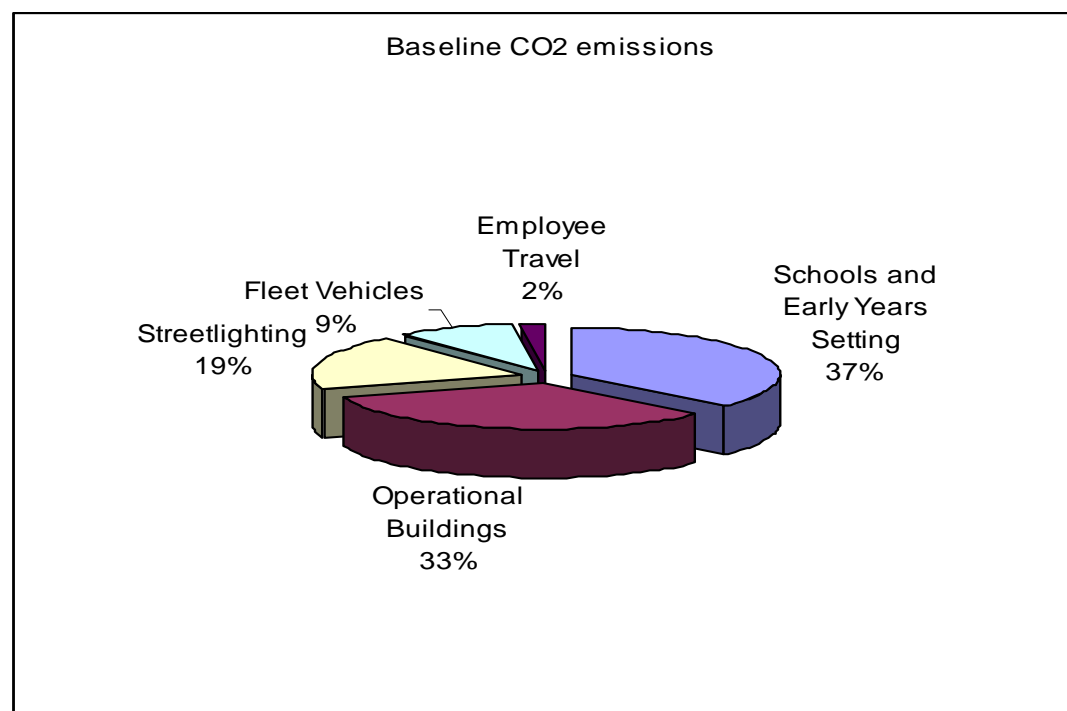
## Local Authority Carbon Management (LACM) Programme

- Climate Change Action Plan advised participation
- Support on CO2 reductions from Council operations
- DBC one of 63 Local Authorities in Phase 7
- Carbon Management Plan adopted by Cabinet (October 2010)



# Carbon Management Plan (CMP)

***Darlington Borough Council will aim to reduce CO2 emissions from Council operations by 25% by the end of 2013/14 (end March 2014) from 2008/09 levels***



**Baseline CO2 emissions: 17,939 tonnes CO2 p.a. 2008/09**



# CMP – Summary of Strategic Themes

1. Carbon management a key priority embedded across all operations
2. Allocate funding and resources
3. Introduce policies across key emission areas and water and waste. Consider renewable and low carbon technologies
4. Integrated approach
5. Staff communication and training
6. Monitoring and review



# CMP – Carbon Saving Projects

- 19 Carbon Saving Projects
- £911,000 estimated initial investment
- 3400.7 T/CO<sub>2</sub> projected annual saving
- 76% of Carbon reduction required
- Example projects –

Dolphin Centre Voltage Optimisation;  
Energy & Carbon Reduction Officer





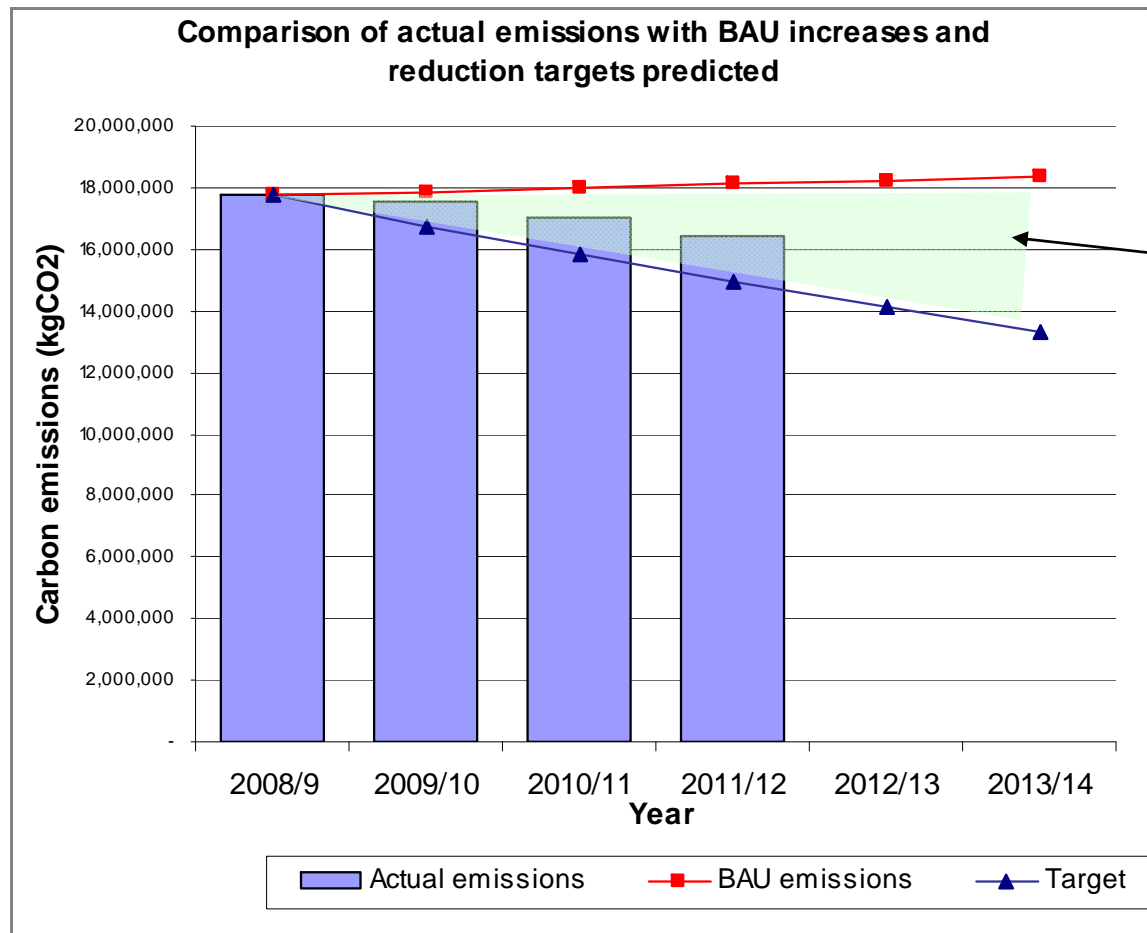
# CMP – Carbon Saving Per Sector

<b>Sector</b>	<b>Target Savings (T/CO2)</b>	<b>Actual Savings (T/CO2)</b>	<b>% of target achieved</b>
Operational Buildings (33%)	1479.7	850.48	57.48
Schools (37%)	1659	249.41	15.03
Streetlighting (19%)	851.96	67.45	7.92
Fleet Vehicles (9%)	403.56	294.63	73.01
Employee Travel (2%)	89.68	76.25	85.02
	<b>4483.9</b>	<b>1538.21</b>	<b>34.31</b>

**Comparison of Target with Actual Carbon Savings 2011/12**



# CMP – Business Case

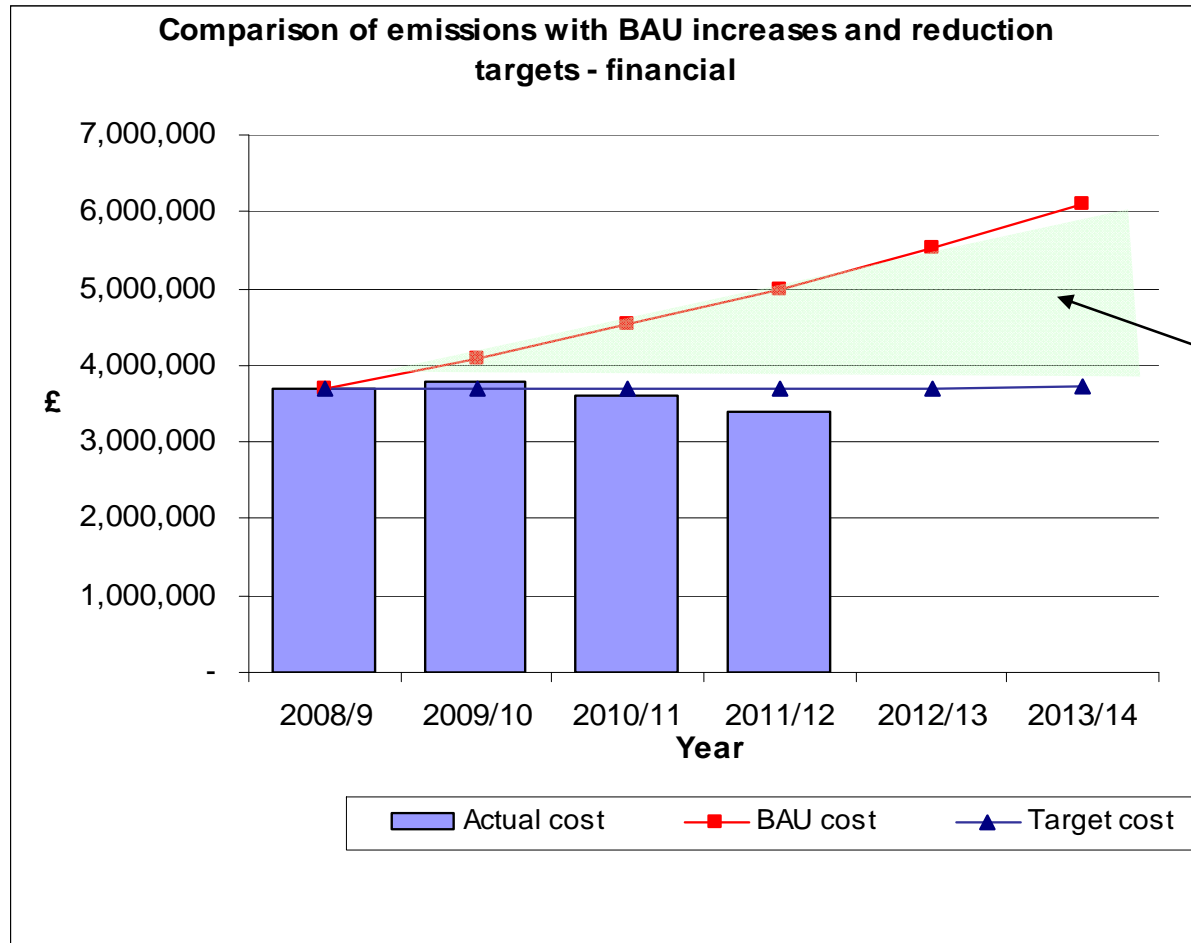


**Projected  
Cumulative  
Carbon  
Value at  
Stake/  
Savings  
15,696  
Tonnes  
CO2**

**Carbon Value at Stake**



# CMP – Business Case



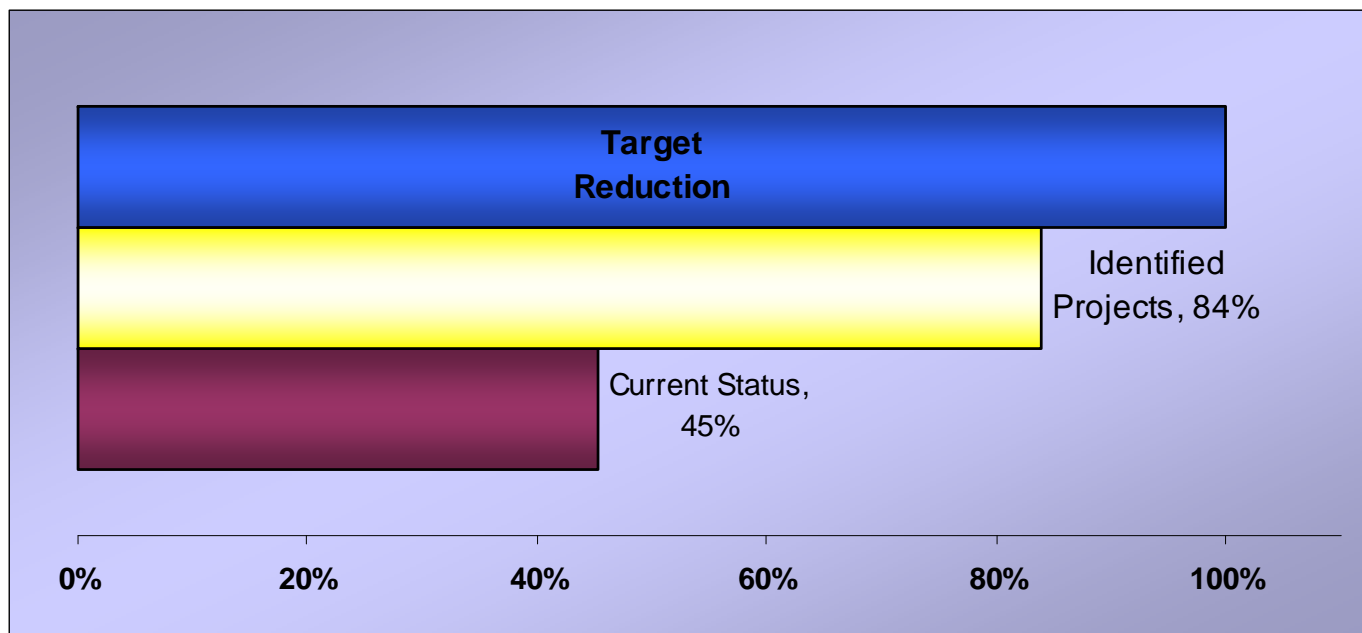
**Projected  
Cumulative  
Financial  
Value at  
Stake/  
Cost  
Avoidance  
£6.69m**

Financial Value at Stake



# CMP – Carbon Saving Project Progress

25 projects



Status (2011/12) against original target and  
projects identified at start of programme



# CMP – Carbon Saving Project Progress

Additional identified projects include:

- Asset rationalisation
- Depot relocation
- Review of supported transport
- Telepresence



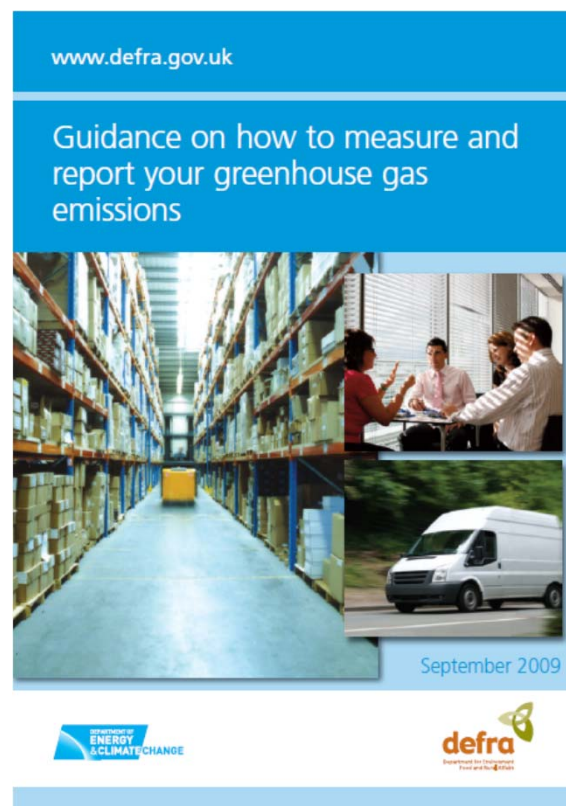
# CMP – The Future

Rebaseline CMP from 2011/12 – 2020?



Climate Local?

NI s abolished- report  
on GHG emissions?



# CMP – The Future

- CRC
- Exclude Schools from rebaselined CMP?



Sector overview

## Schools

Learning to improve energy efficiency

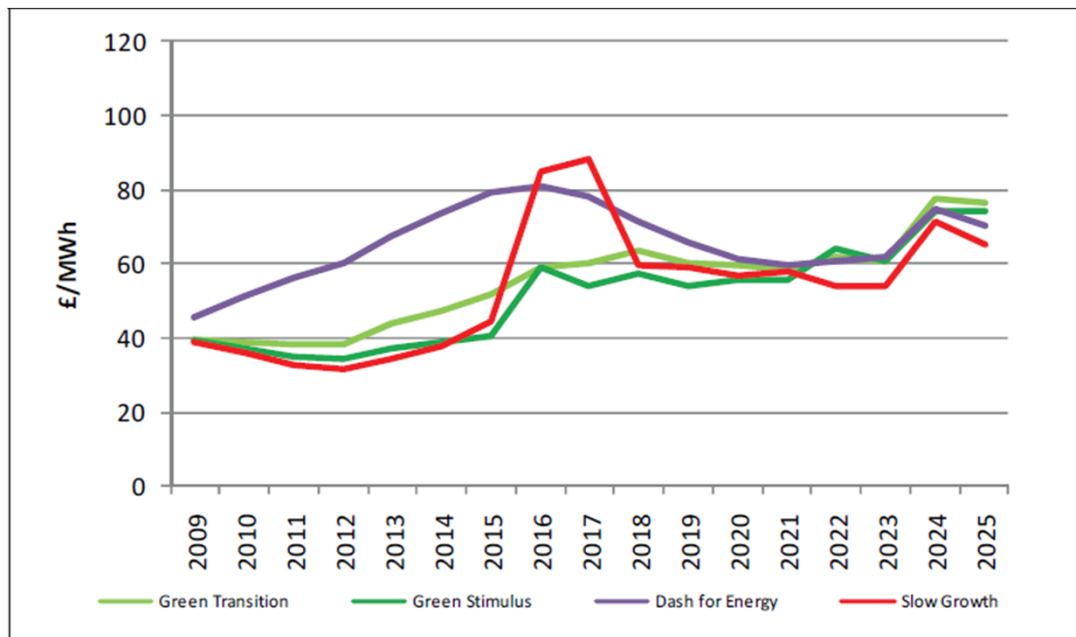


enter



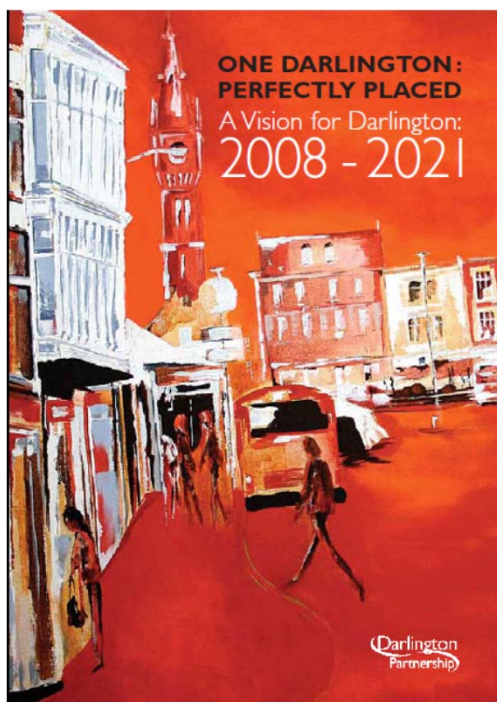
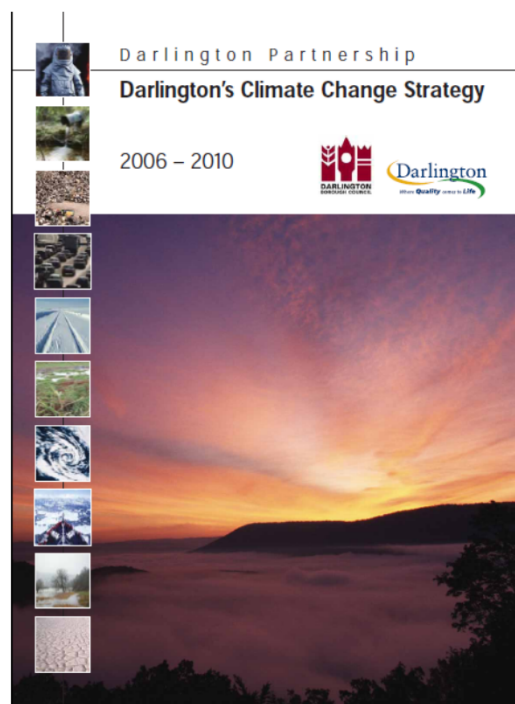
# CMP – The Future

- Water efficiency?
- Future Energy Costs





# Background – Our Climate Change Commitments



‘Darlington is a Low Carbon Borough’



# Background – Our Climate Change Commitments



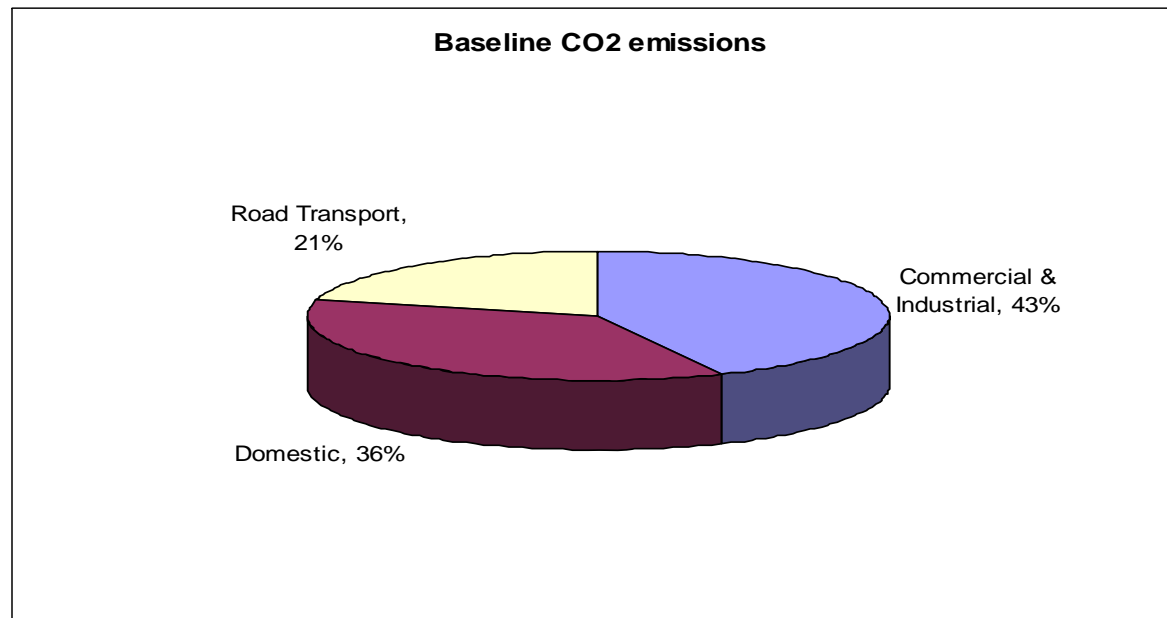
2009

- Exceed EU CO<sub>2</sub> emissions targets
- Develop Sustainable Energy Action Plan (SEAP)
- 20% reduction in Borough-wide emissions by 2020 (2005 baseline)
- SEAP update due 2013



# Our Climate Change Progress

Baseline CO2 emissions: 809,310 Tonnes p.a. (2005)



8% total emission reduction, 40% target achieved (2010)



# Fuel Poverty - Background

- **‘Fuel Poverty’** – over 10% of household income spent on fuel to maintain adequate warmth for health and comfort
- **3 factors** – low income, inadequate heating and insulation, rising energy costs
- **Particularly affects** - Rural areas, older people, children and young people, those on benefits, disabled people, those with long-term illness
- **Consequences** – stress, worry, social isolation, respiratory and circulatory conditions, energy use rationing, cutting back on food
- **20.7% fuel poor** households in Borough (2010)



# Fuel Poverty - Background

	Lower Super Output Area (LSOA)	% of households fuel poor	Number of fuel poor households	National Ranking for fuel poverty (1=worst)
In the Most Deprived 3% nationally	Eastbourne- Central/SE part	31.6%	322	356
	Park East- S/SE part	31.1%	214	431
	Northgate- East part	30.4%	217	577
	Heigh & Coni- Rural	29.7%	291	727
	Lascelles- E part	29.5%	223	781
	Central- Town centre and TCF	29.3%	356	849
In the most Deprived 10% nationally	North Road- S part	27.9%	212	1334
	Haughton West- SE/central part	27.4%	176	1572
	Central- Albert Hill	26.8%	229	1878
	Cockerton West- East/Central part	26.3%	172	2169
	Haughton East- W/Central part	25.8%	130	2494
	Eastbourne- SW part	25.3%	145	2818
	Pierremont- East part (Hopetown)	25.1%	170	2971
	North Road- W part (Rise Carr)	24.9%	192	3137
	Cockerton West- North part	24.8%	154	3220

DECC, 2010

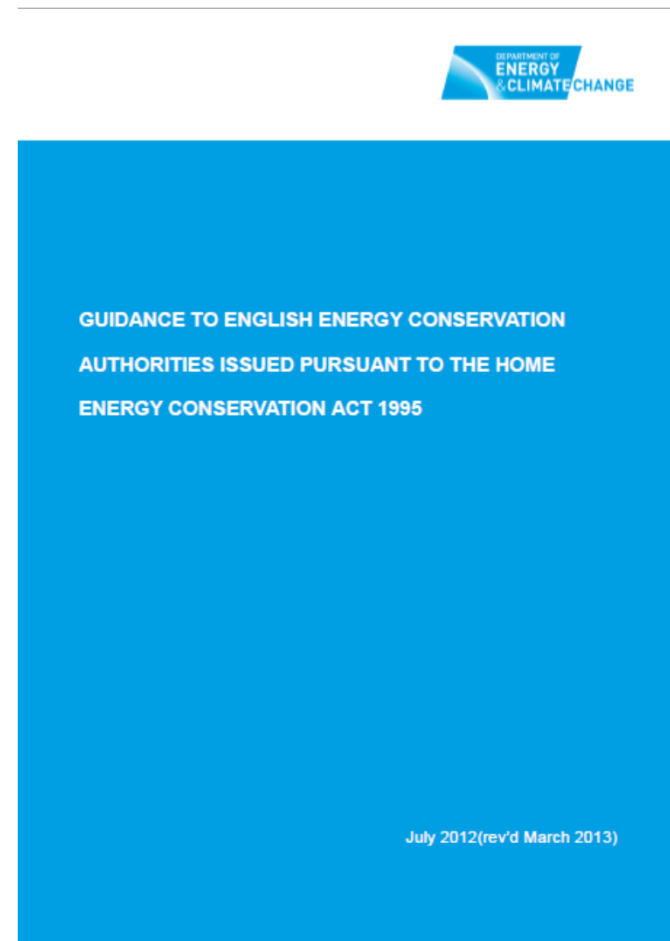


# Fuel Poverty – HECA Report

## Home Energy

### Conservation Act (1995):

- Publish report by 31/03/13
- Local energy efficiency ambitions and priorities
- Energy efficiency improvements to Housing
- Area based/ street by street roll out
- Timeframe, national and local partners



<http://www.darlington.gov.uk/Housing/documents.htm>



# Fuel Poverty – Warm Up North

- Consortium of 6 Local Authorities
- Supported by Energy Saving Trust
- Procuring preferred Green Deal provider
- Delivering energy efficiency measures to 1500 properties
- Customers pay back cost of energy-saving improvements through energy bill
- 2013–2018 (+3 year potential extension)
- Green Deal Investment Bank & ECO funded

energy  
saving  
trust



# Fuel Poverty – Collective Switching

- Switching energy suppliers can save money
- Complex with 700+ tariffs to choose from
- Majority of households ‘stick’ to their supplier:

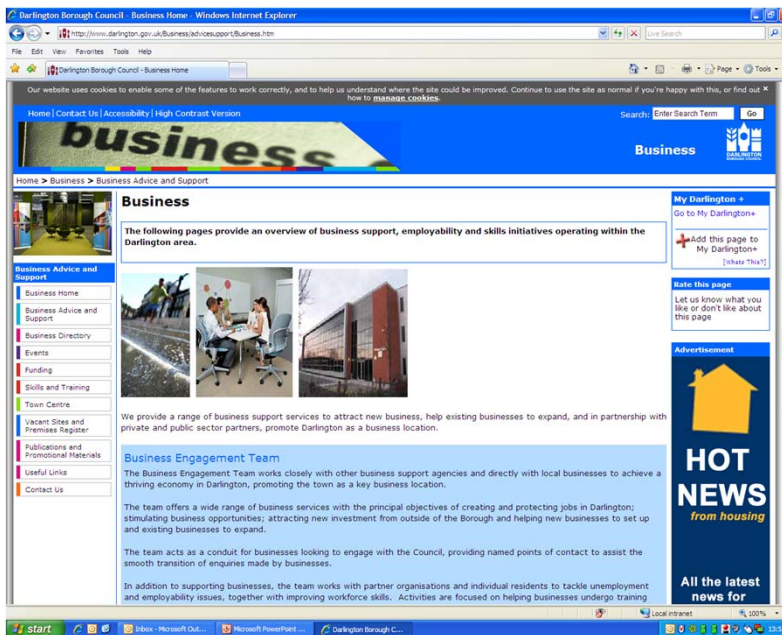


- Collective Switching - consumers group together to bulk buy energy
- Eases switching and reduces energy costs through market power





# Green Economy



- Tees Valley LEP- Low Carbon/ High Value Economy Ambitions
- NE nominated as UK's Low Carbon Economic Area for ultra low carbon vehicles (2009)
- UK renewables sector worth £12.5 billion with 100,000 jobs – to grow fourfold by 2020 – extra £60 billion and 400,000 new jobs (Government)
- Wind and wave power will provide 250,000 new UK jobs by 2050 (Carbon Trust)
- The market for low carbon goods should be worth \$500 billion/ year by 2050 (Stern Review, 2006)



# What We've Covered

## **Carbon Management**

- ✓ Why the Council manage Carbon emissions from our operations
- ✓ Carbon Management Plan and Carbon Saving Progress
- ✓ The Future of Carbon Management

## **Climate Change**

- ✓ Our commitments towards a Low Carbon Borough
- ✓ Climate Change progress

## **Fuel Poverty**

- ✓ Fuel Poverty in the Borough
- ✓ What we are doing to tackle Fuel Poverty

## **Green Economy**

- ✓ The growing Green Economy
- ✓ What needs to be done to support the sector



# Any Questions?

Elizabeth Goodchild  
Green Economy Officer  
Place/ Programmes & Projects



01325 388920

[elizabeth.goodchild@darlington.gov.uk](mailto:elizabeth.goodchild@darlington.gov.uk)

