

NE PCSA

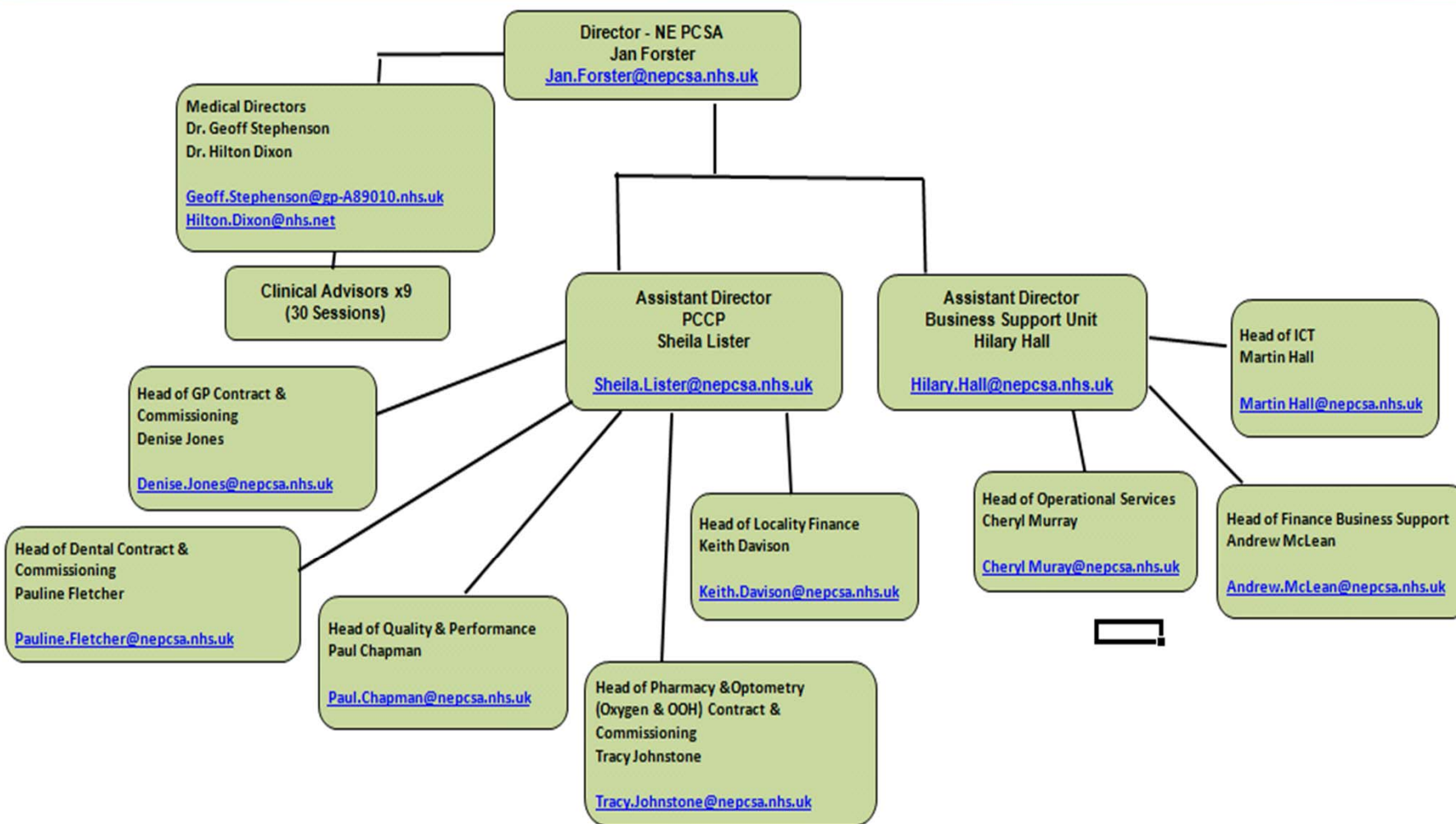
Assistant Director: Sheila Lister

NE PCSA

Background to NE PCSA

- **Established December 2010**
- **Core Functions**
- **Governance arrangements including relationship to PCTs and SHA**

NE PCSA Structure



NE PCSA

Current working arrangements

- **Decision making forums**
- **Liaison arrangements**
- **Clinical/Advisory support**

NE PCSA

Future state at 1st April 2013

- **NHS CB Local Area Teams**
- **Local Professional Networks**
- **Single Operating Model**

NE PCSA

Single Operating Model

Key Features:

- **Single system nationally**
- **Quality and safety paramount**
- **Clinical leadership**
- **Common policies and procedures**
- **Single accountability framework**

NE PCSA

Transition to NHS CB

- **Increased clinical input**
- **Shift of additional functions currently with PCTs e.g. Secondary Care Dental Services commissioning**
- **No additional resources – potentially less**