

# **Darlington Borough Local Plan**

## **Policies Maps**



**Darlington Borough Council**

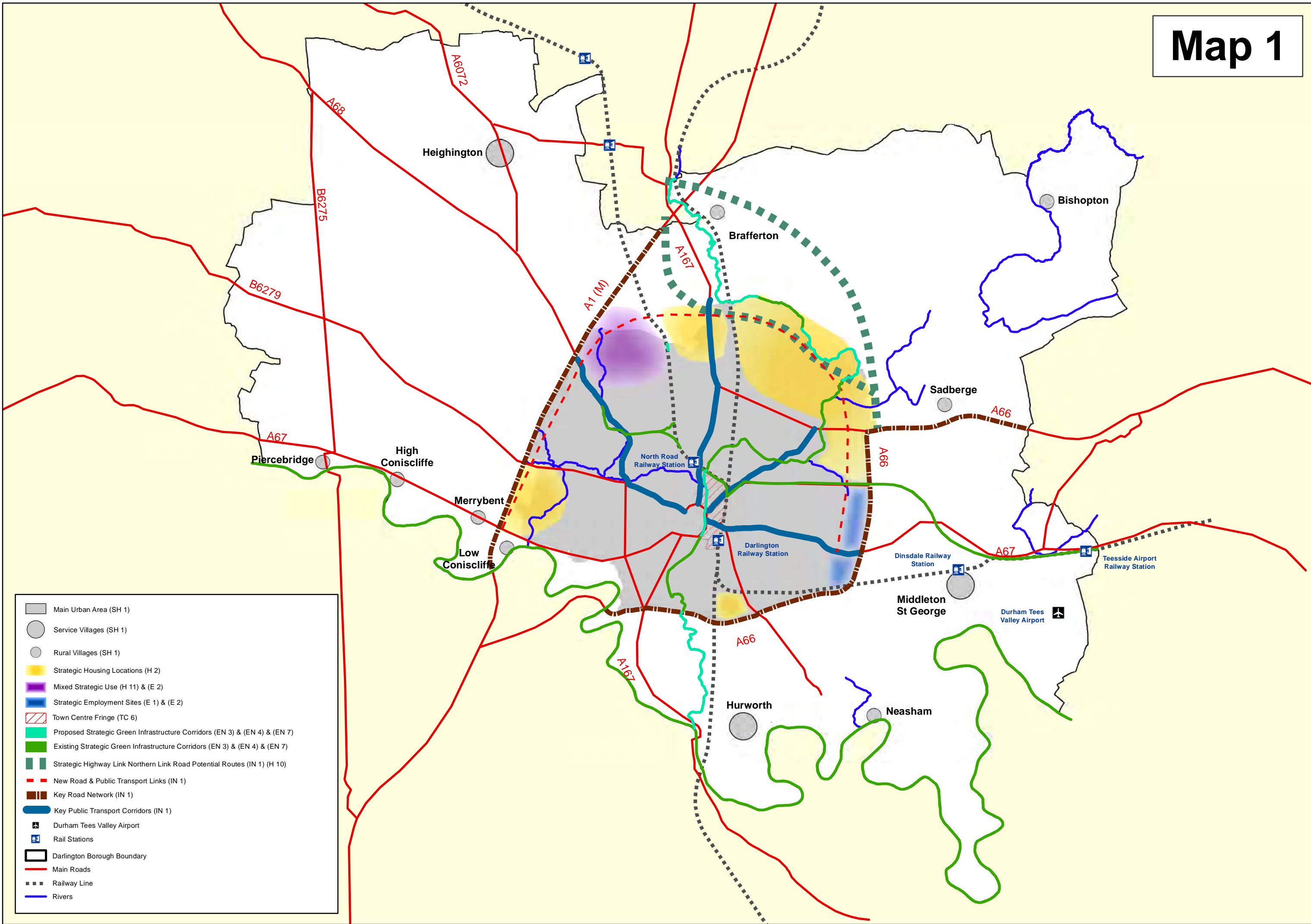
**May 2018**

## Contents

|        |  |
|--------|--|
| Map 1  | Key Diagram  |
| Map 2  | Borough Overview   |
| Map 3  | West side of the Borough   |
| Map 4  | East side of the Borough   |
| Map 5  | Town Overview  |
| Map 6  | North West of the Town   |
| Map 7  | North East of the Town   |
| Map 8  | South East of the Town   |
| Map 9  | South West of the Town   |
| Map 10 | Town Centre  |
| Map 11 | Heighington  |
| Map 12 | Hurworth   |
| Map 13 | Middleton St George  |
| Map 14 | Sadberge, Bishopton, Brafferton and Neasham                      |
| Map 15 | Low Coniscliffe, Merrybent, High Coniscliffe and<br>Piercebridge |

Key

# Map 1

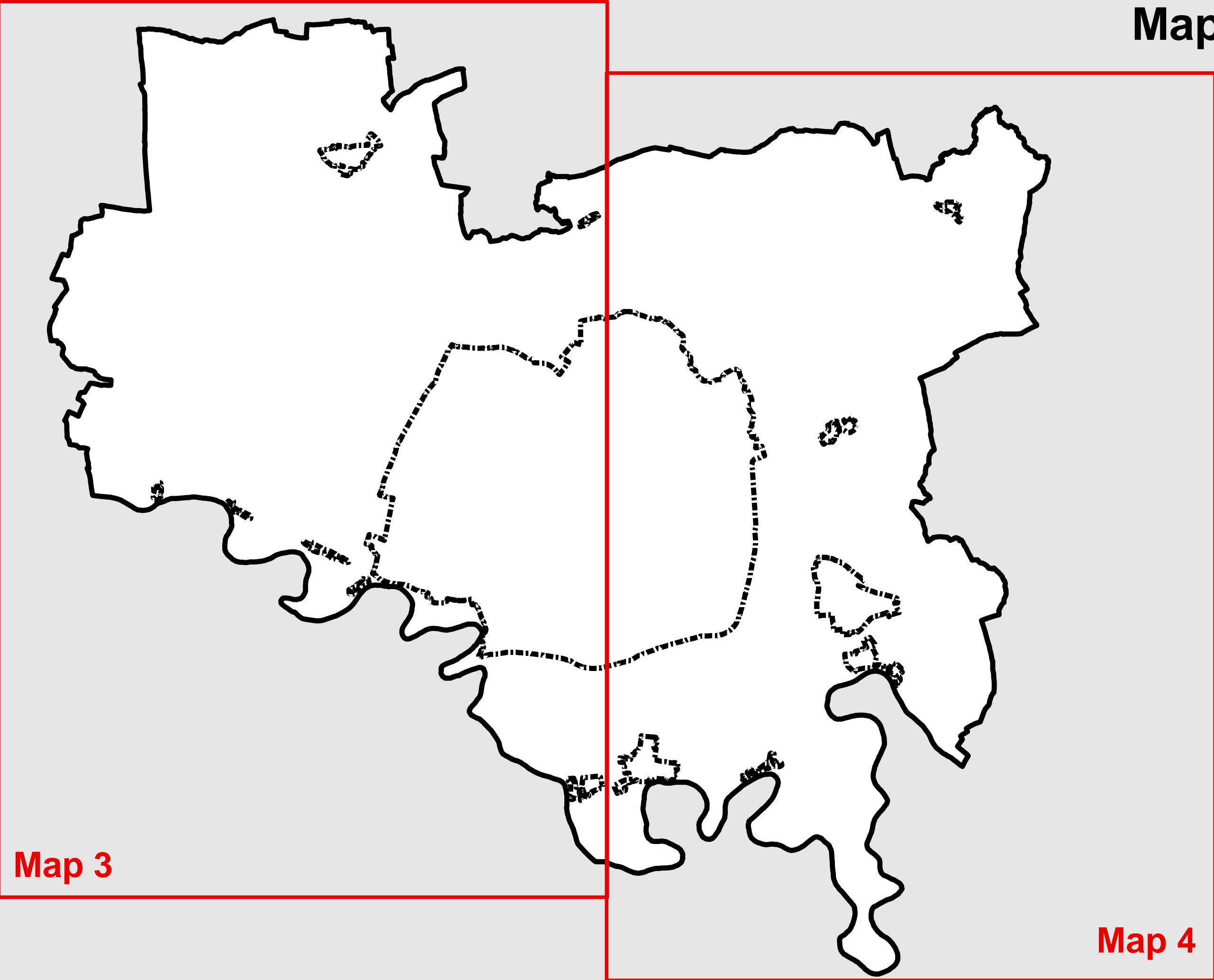


- Main Urban Area (SH 1)
- Service Villages (SH 1)
- Rural Villages (SH 1)
- Strategic Housing Locations (H 2)
- Mixed Strategic Use (H 11) & (E 2)
- Strategic Employment Sites (E 1) & (E 2)
- Town Centre Fringe (TC 6)
- Proposed Strategic Green Infrastructure Corridors (EN 3) & (EN 4) & (EN 7)
- Existing Strategic Green Infrastructure Corridors (EN 3) & (EN 4) & (EN 7)
- Strategic Highway Link Northern Link Road Potential Routes (IN 1) (H 10)
- New Road & Public Transport Links (IN 1)
- Key Road Network (IN 1)
- Key Public Transport Corridors (IN 1)
- ✈ Durham Tees Valley Airport
- 🚂 Rail Stations
- ▭ Darlington Borough Boundary
- Main Roads
- Railway Line
- Rivers

Map 2

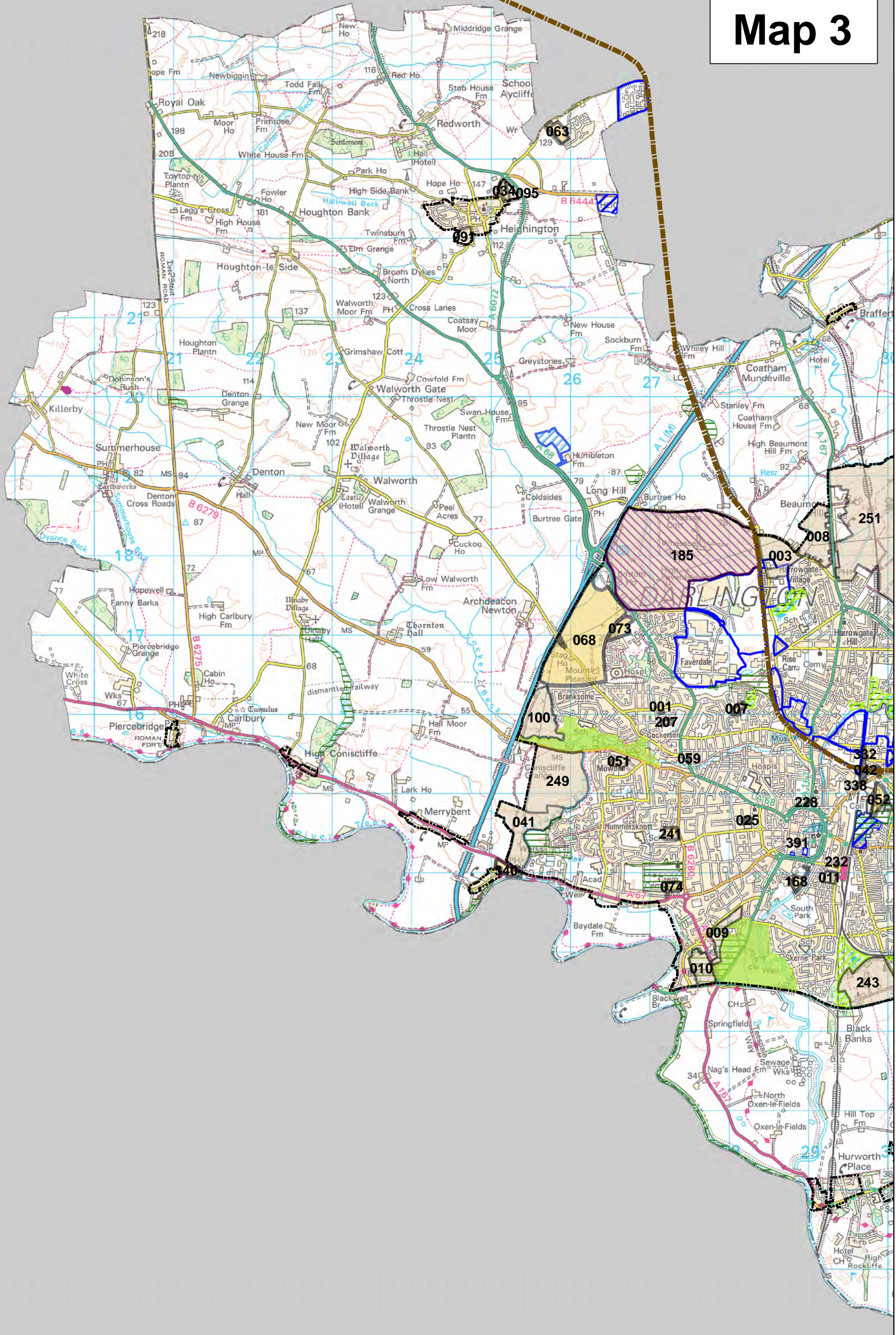
Map 3

Map 4



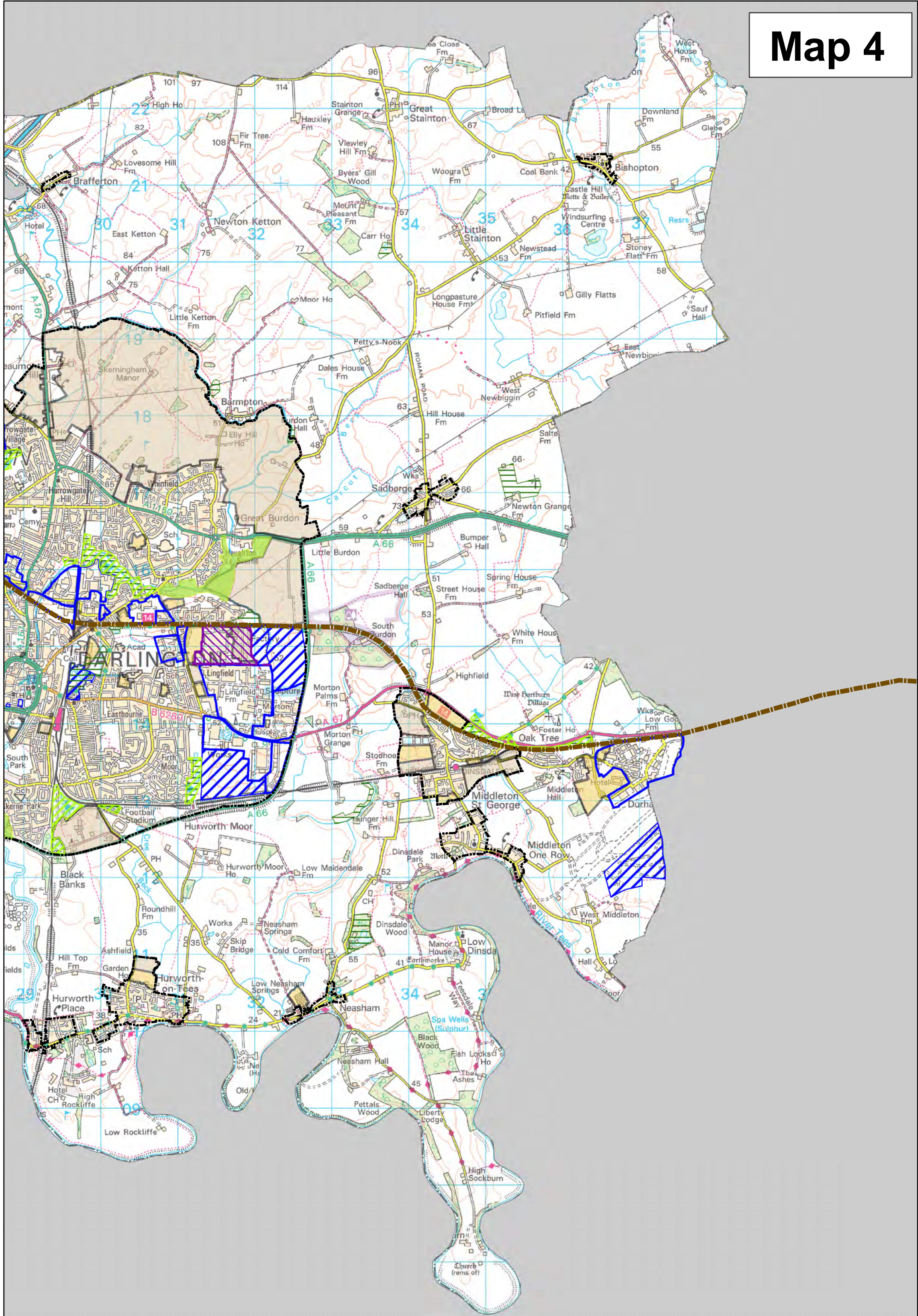


# Map 3





# Map 4





**Map 5**

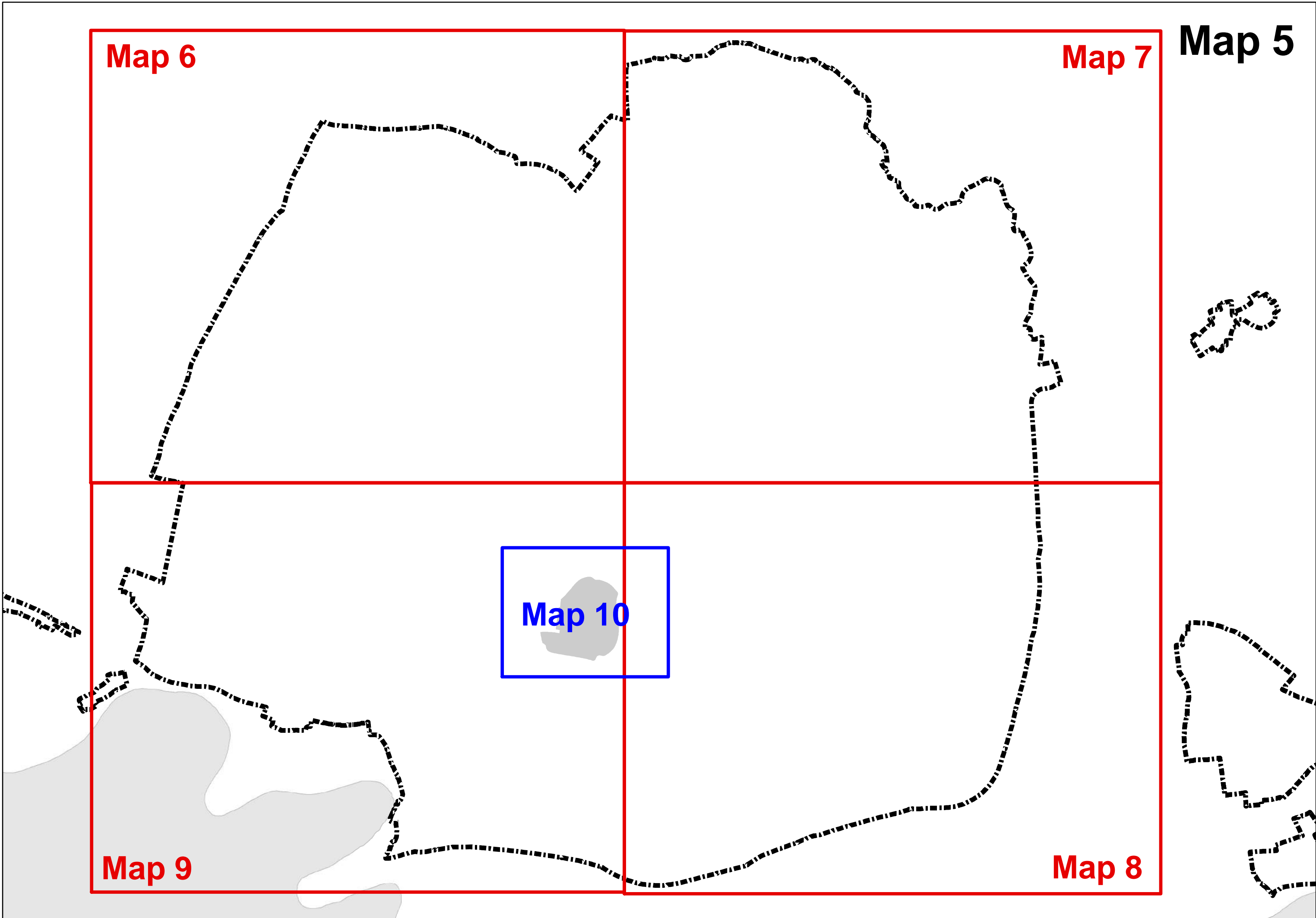
**Map 7**

**Map 6**

**Map 10**

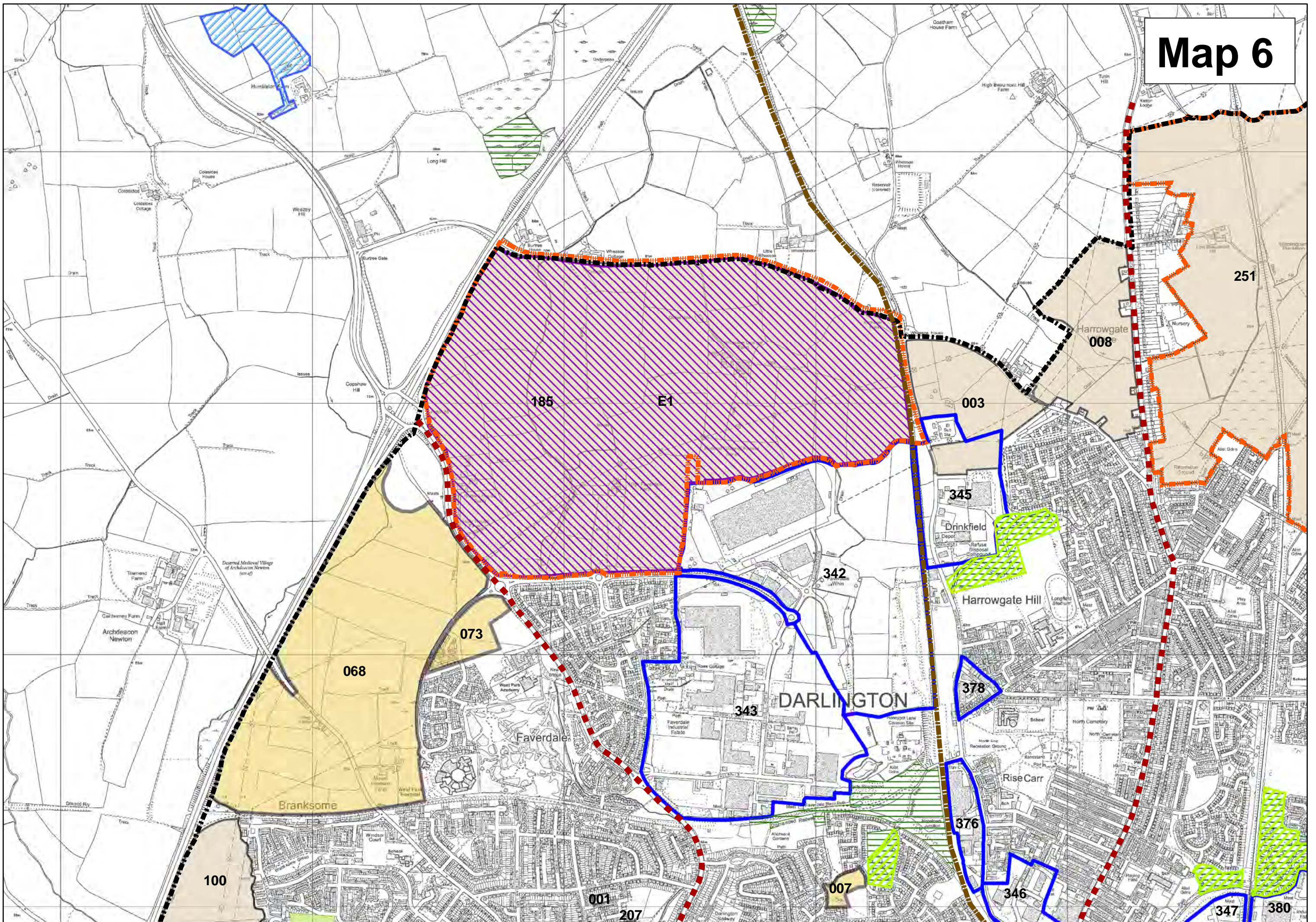
**Map 8**

**Map 9**



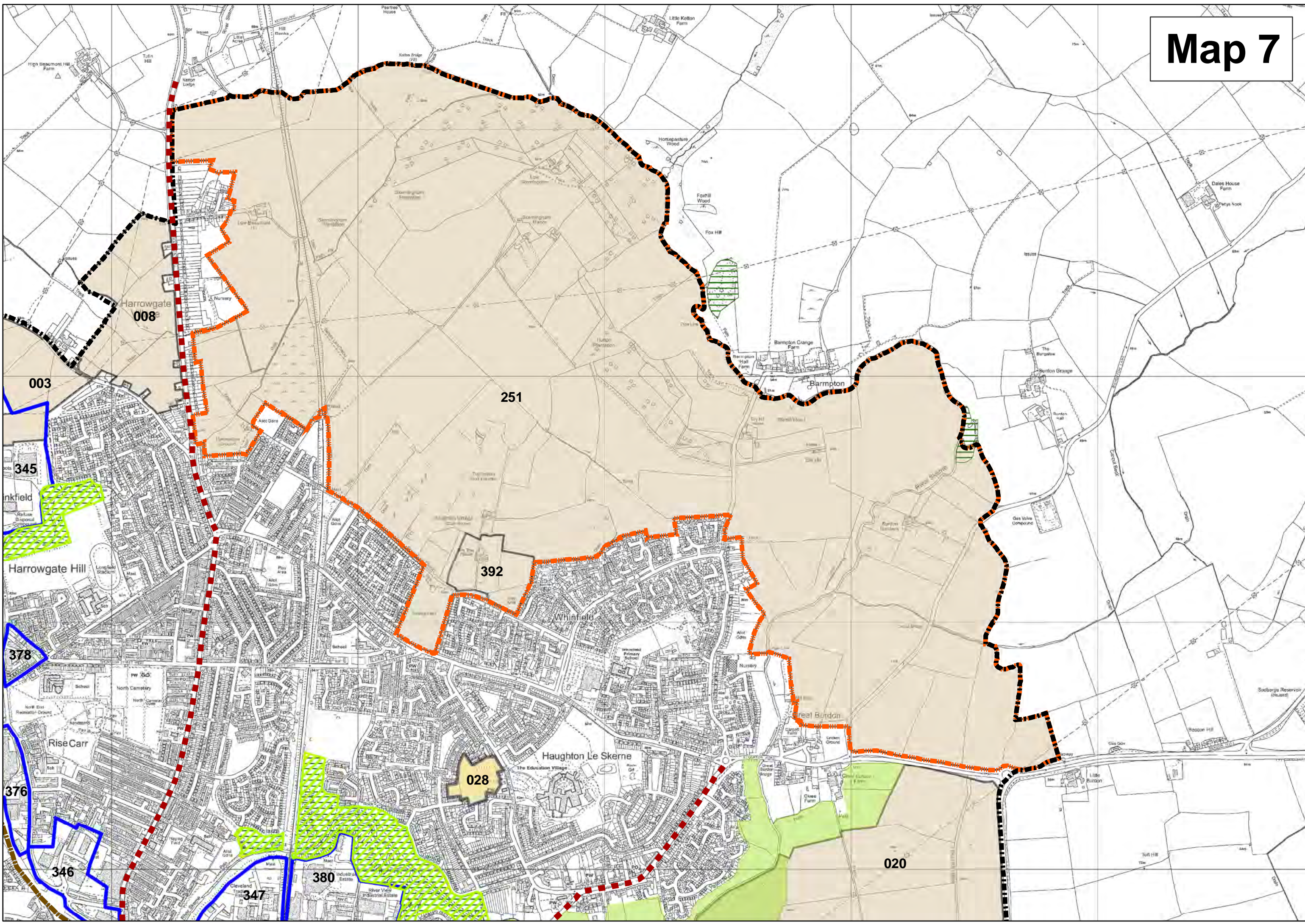


# Map 6



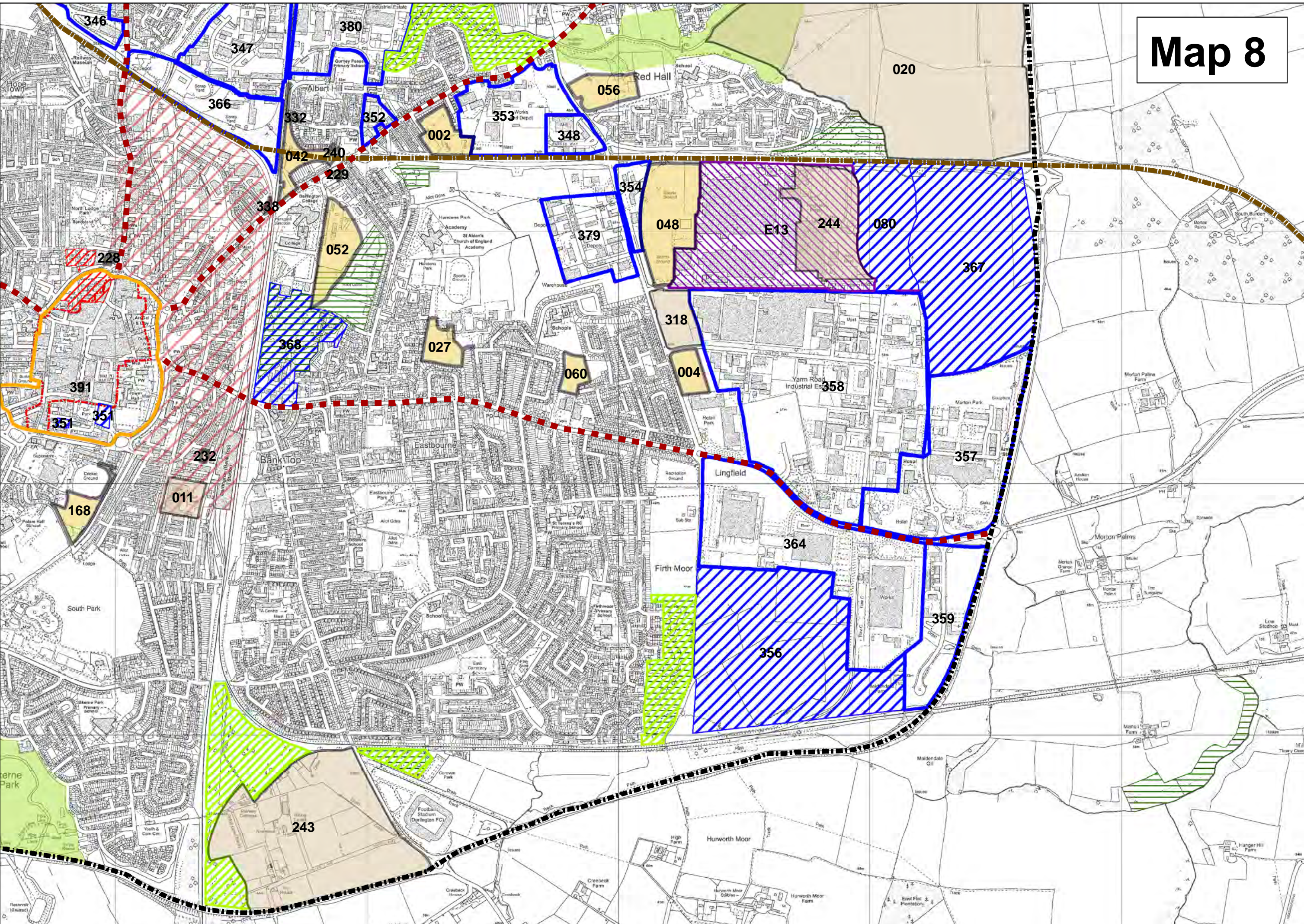


# Map 7



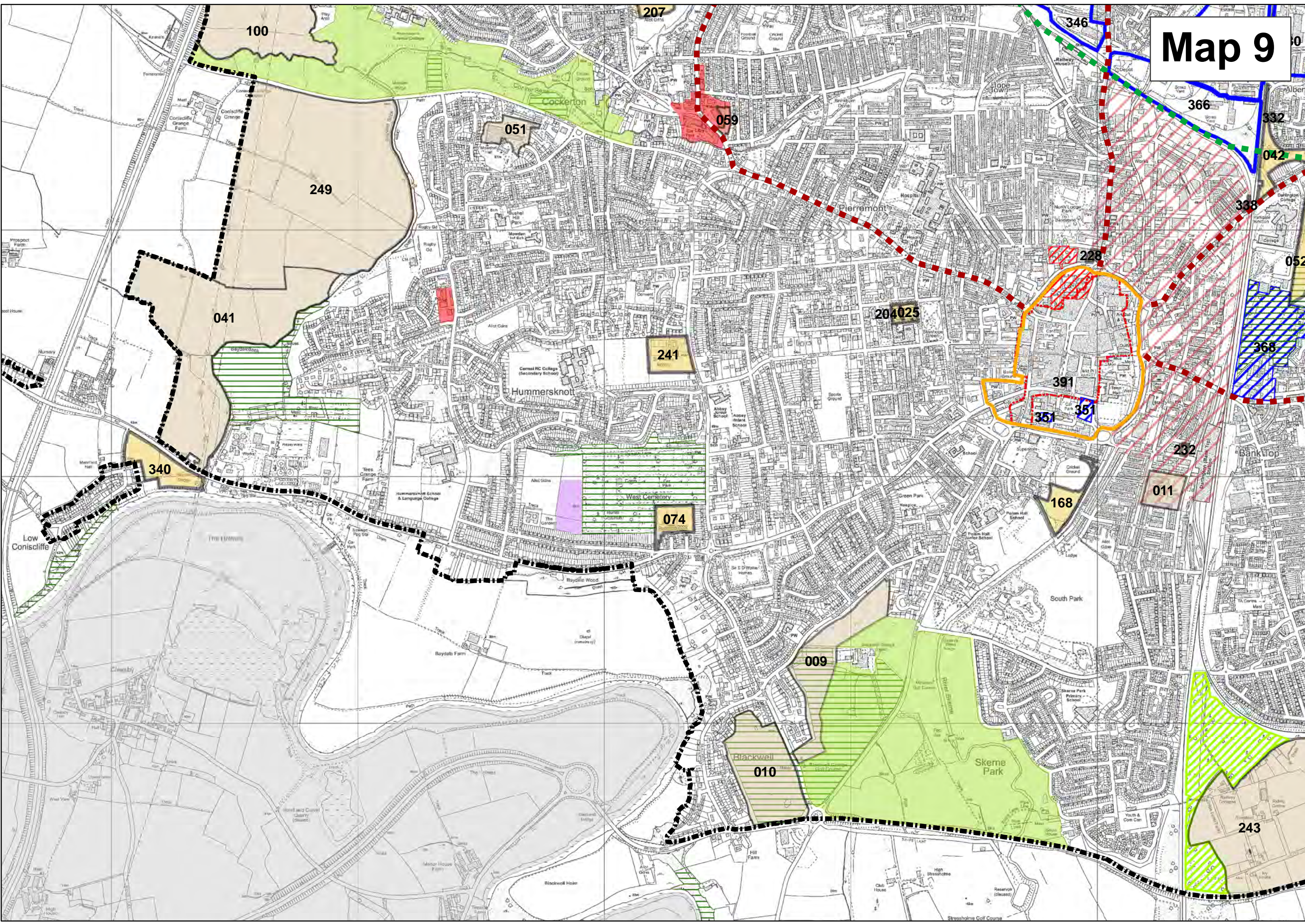


# Map 8



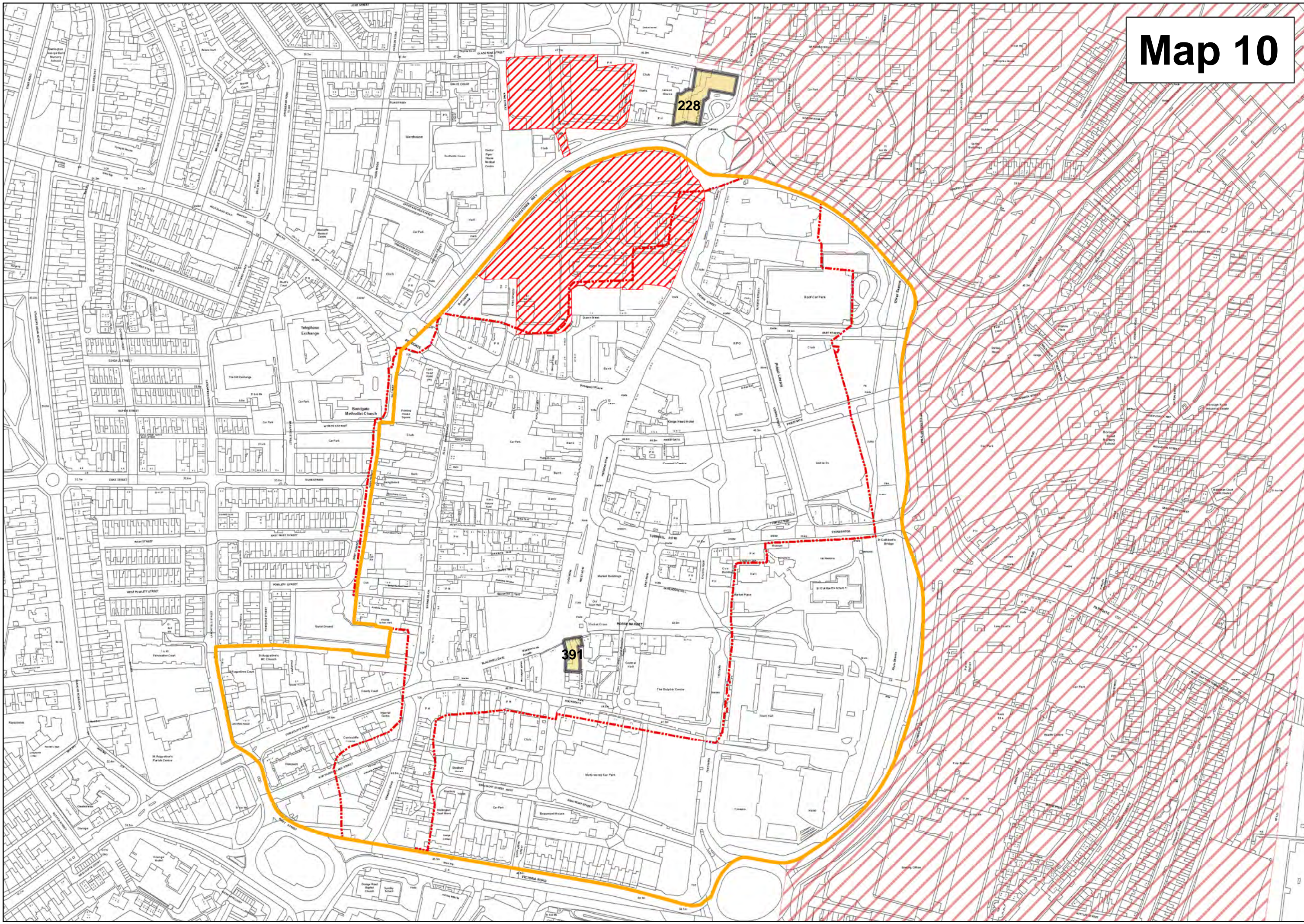


# Map 9



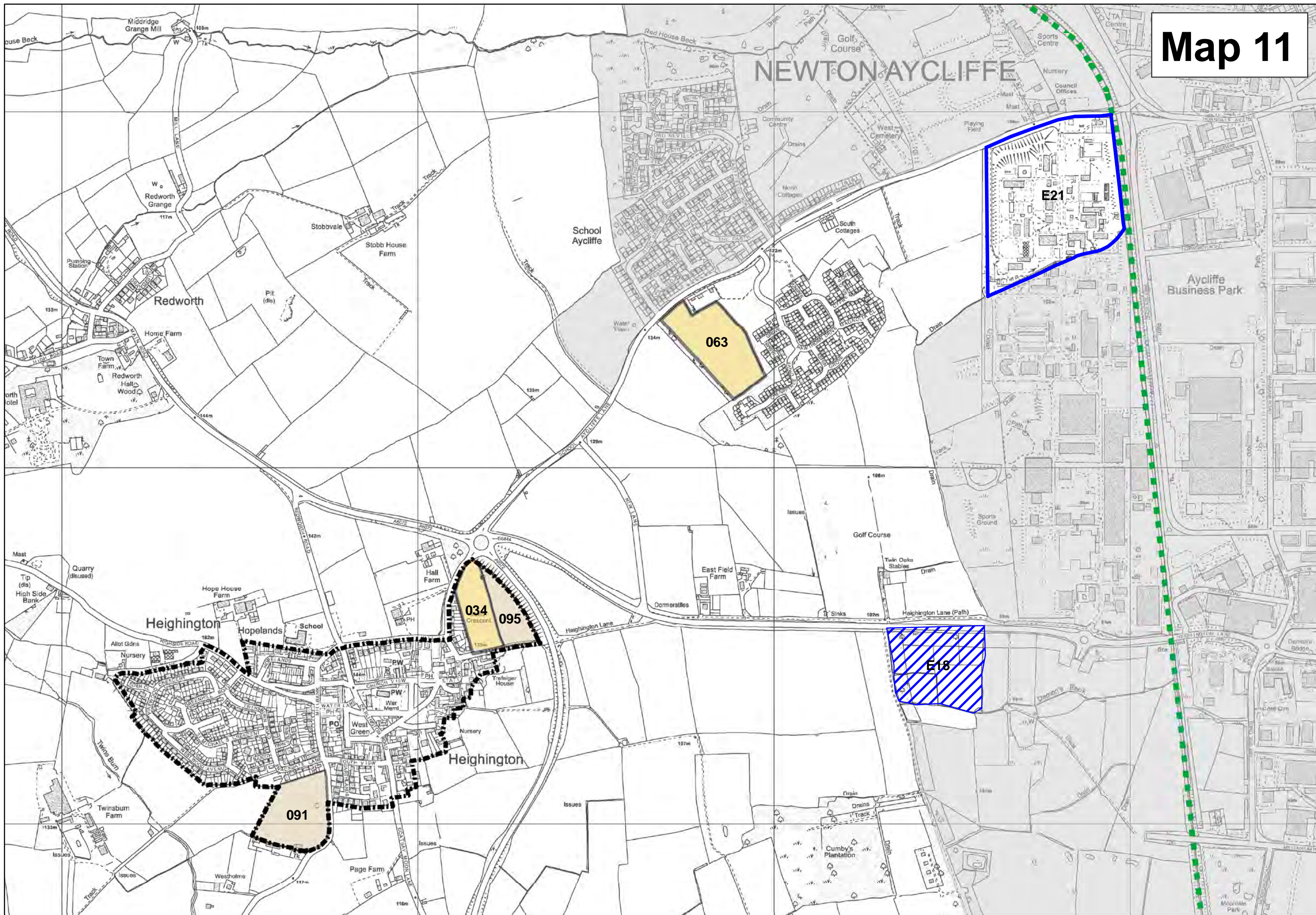


# Map 10



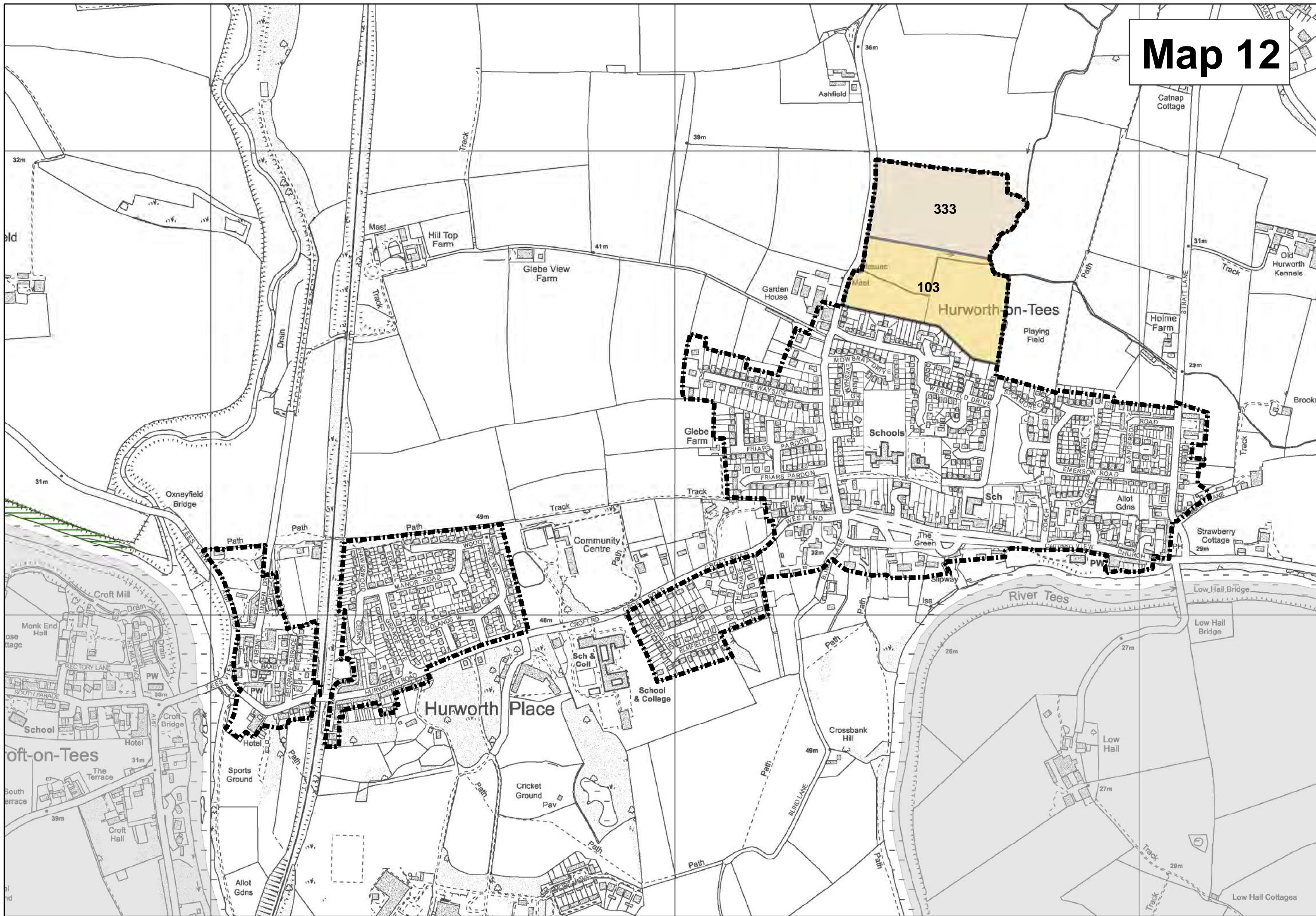


# Map 11



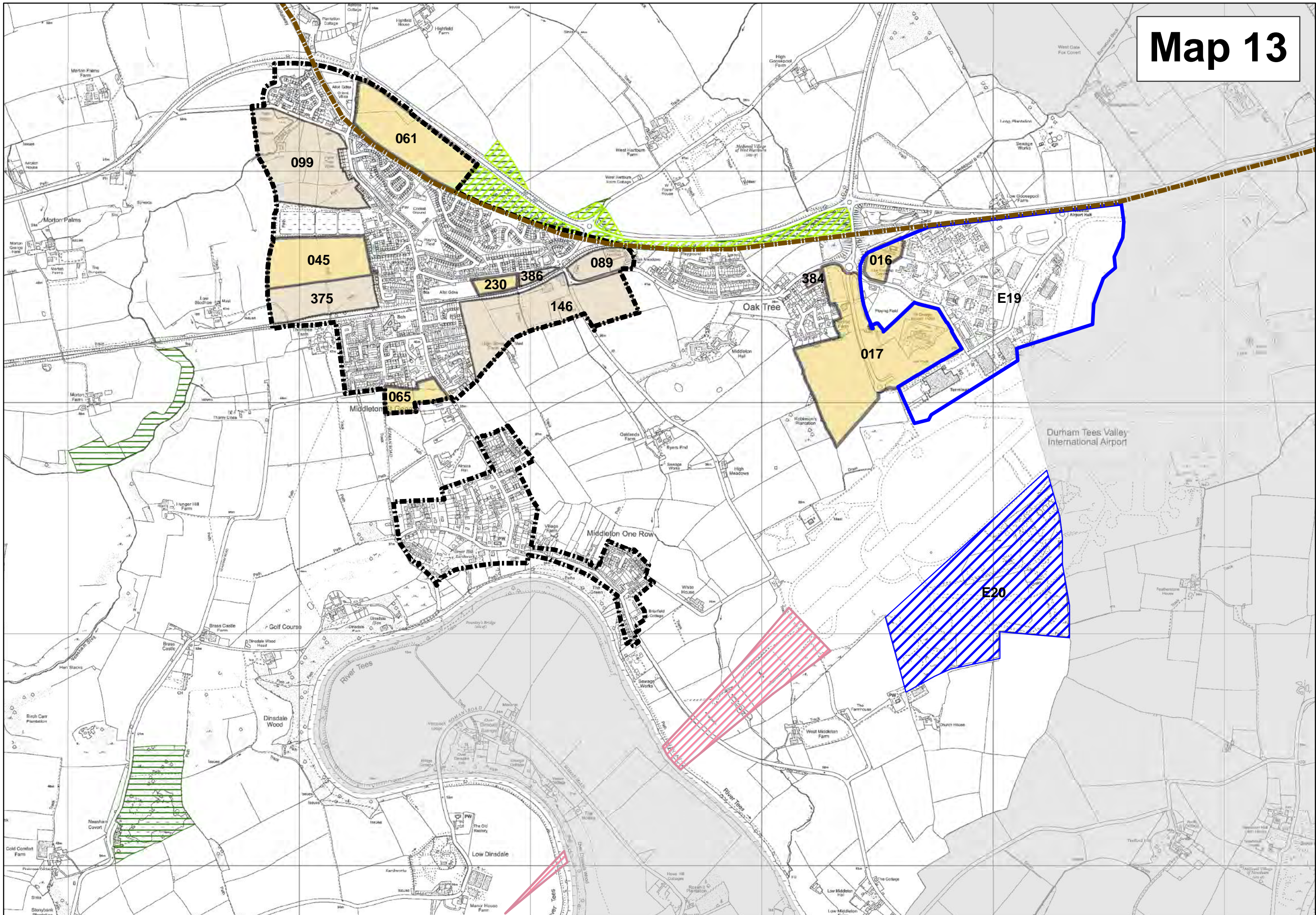


# Map 12



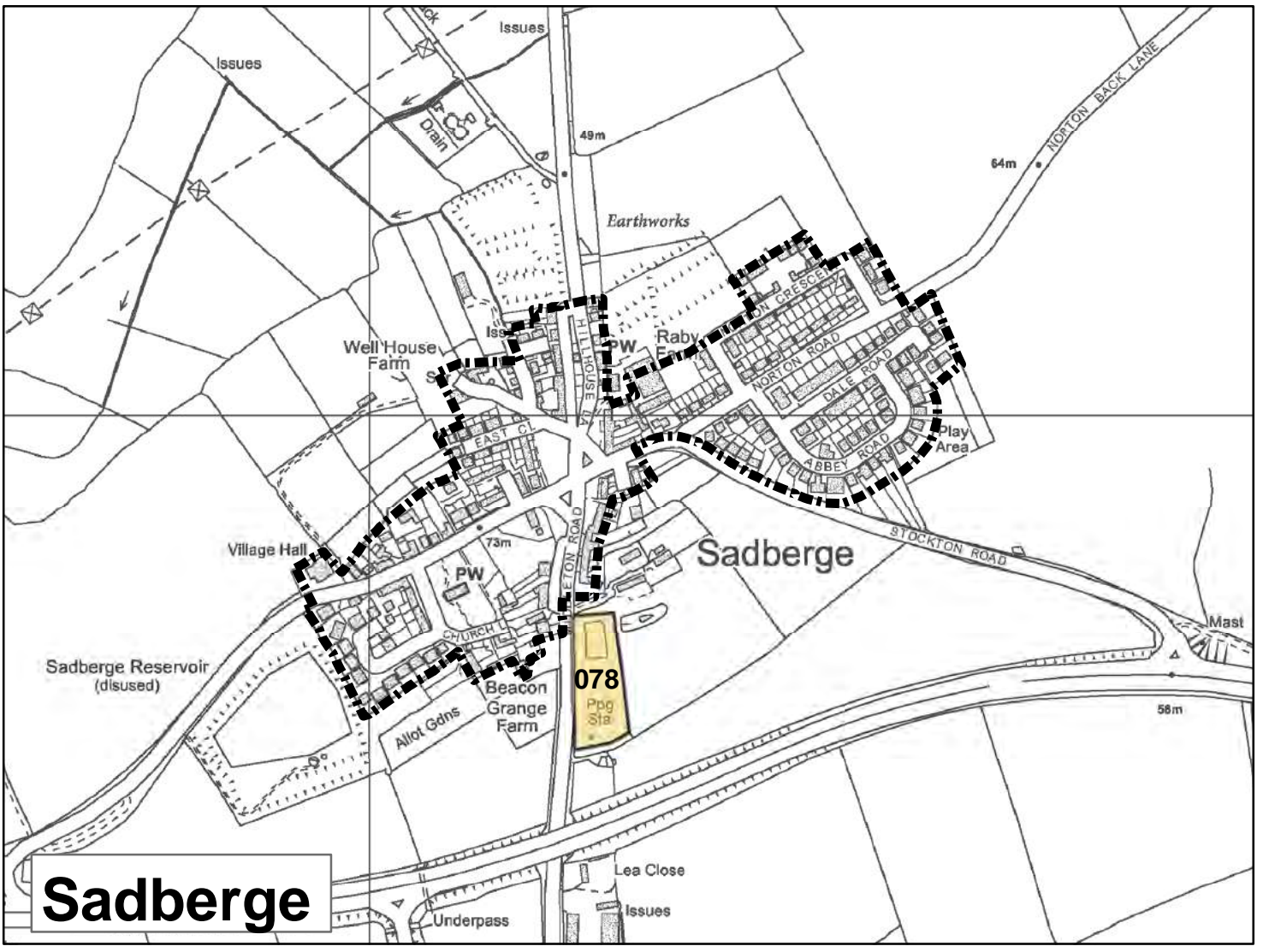


# Map 13

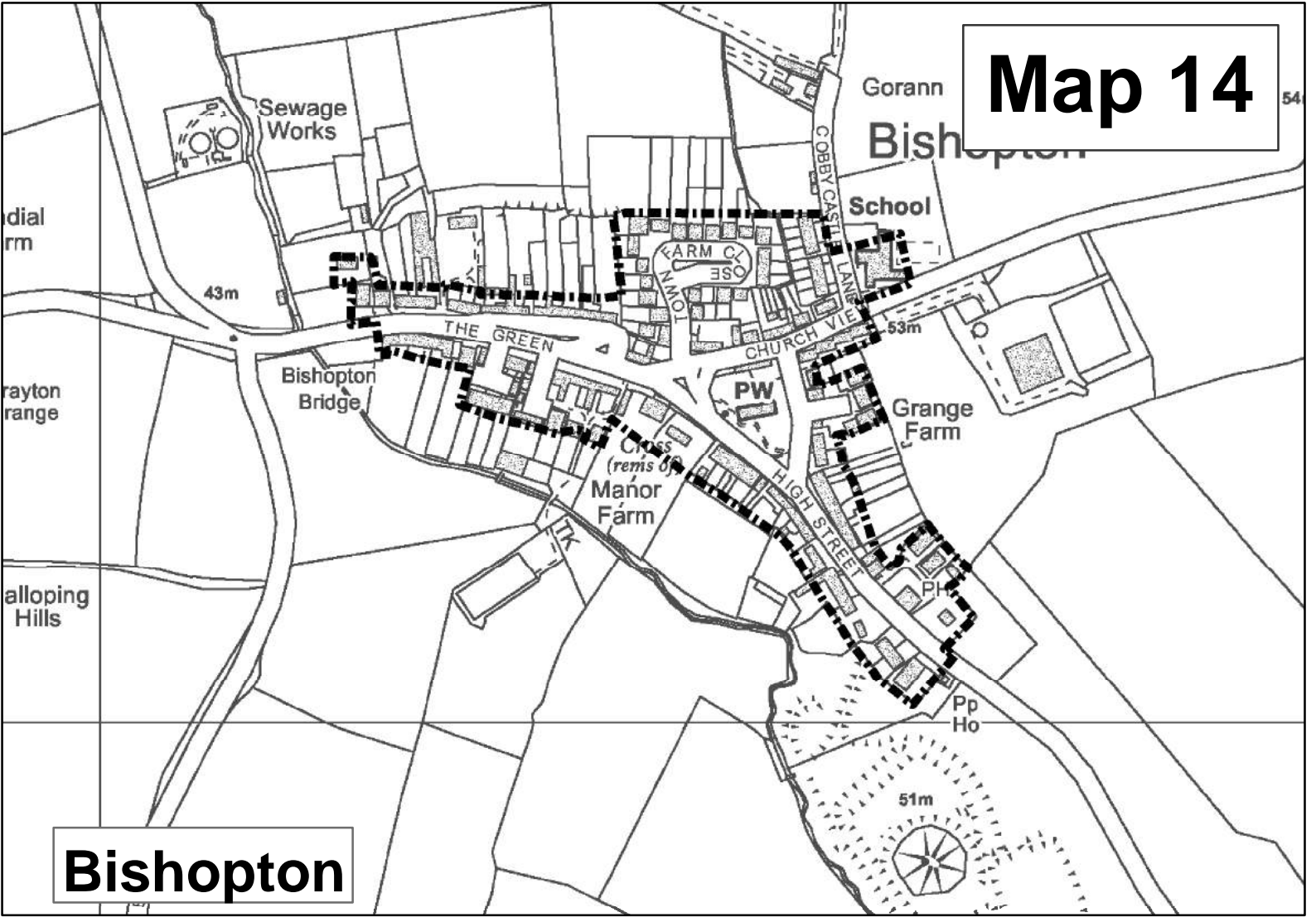




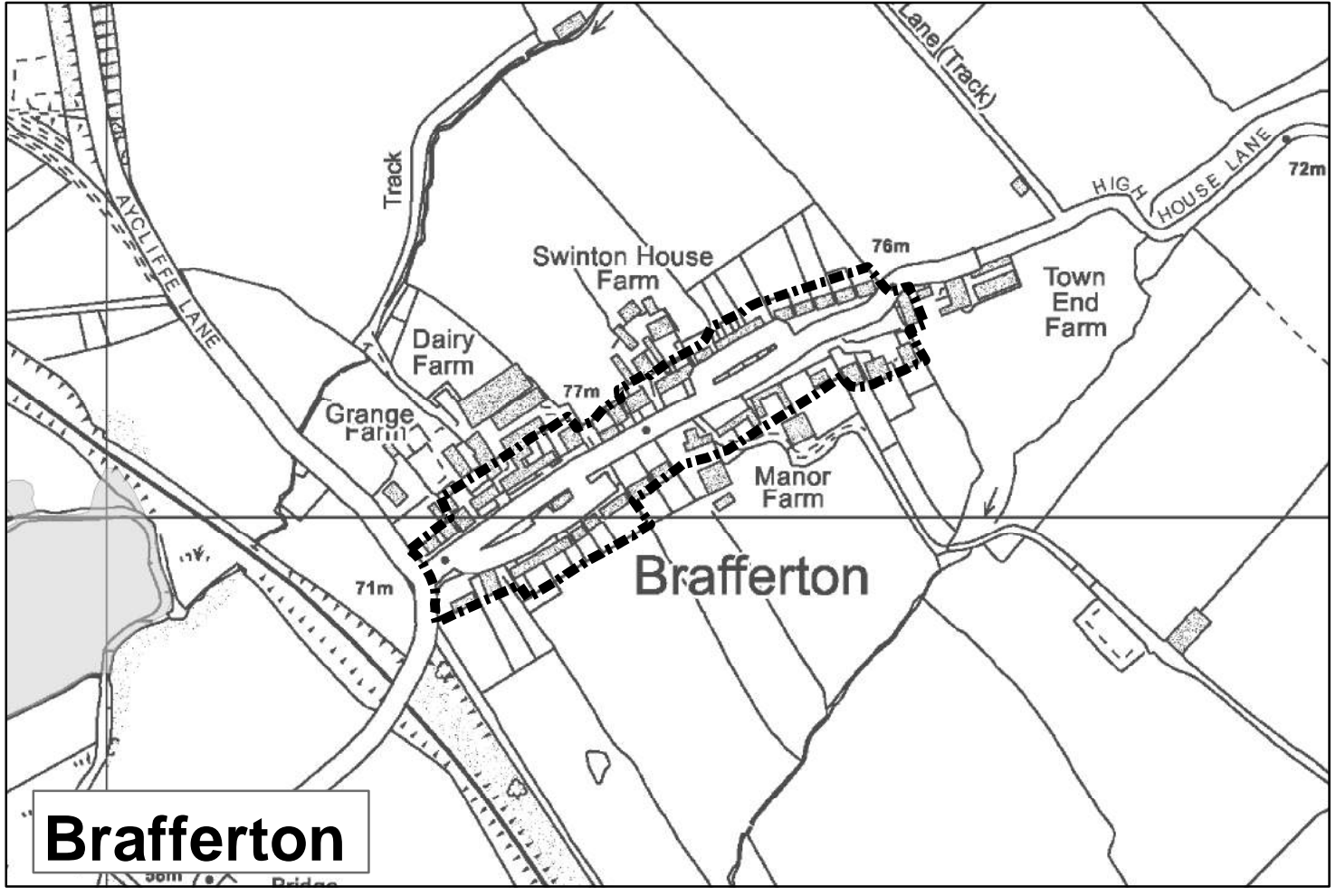
# Map 14



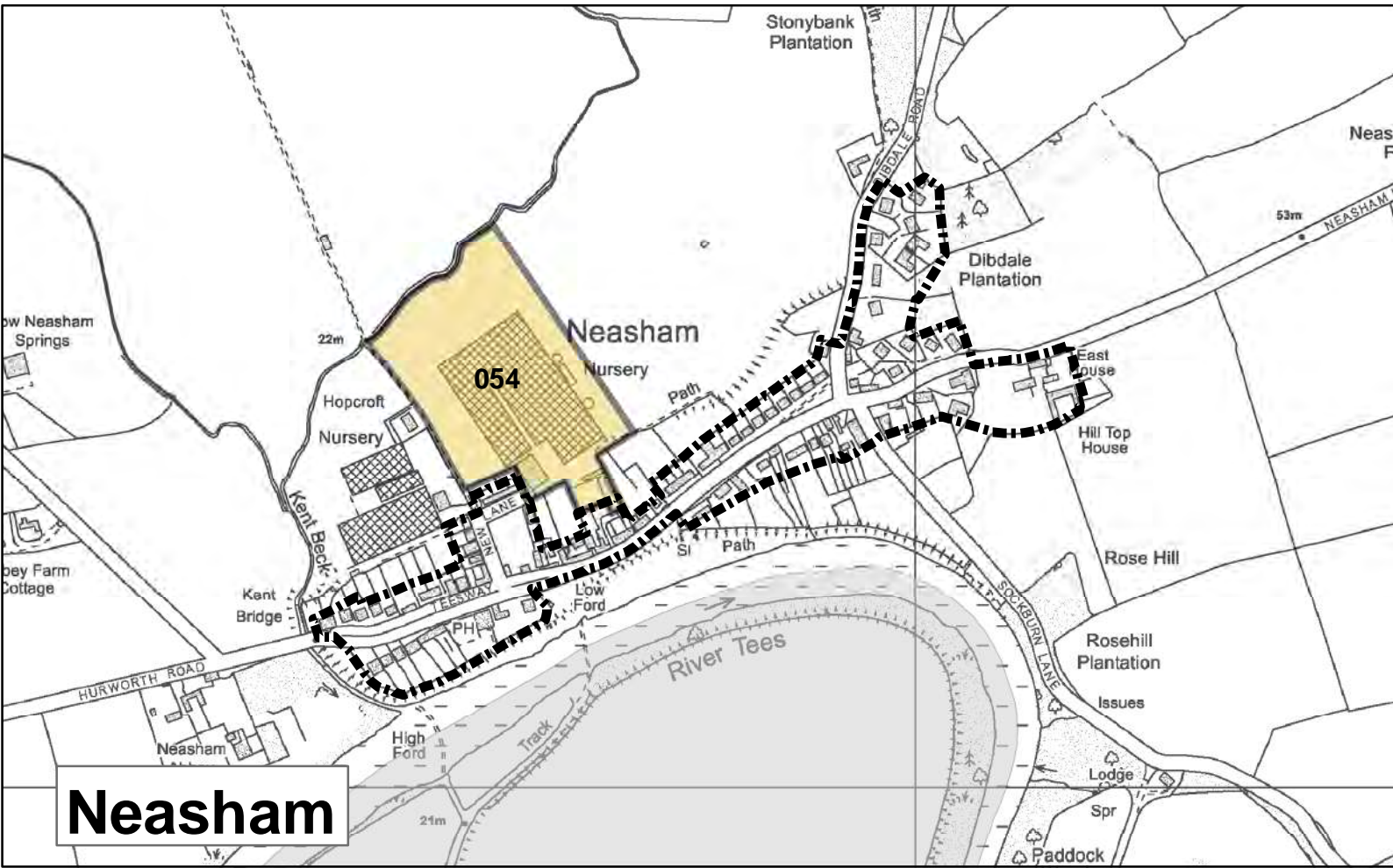
**Sadberge**



**Bishopton**

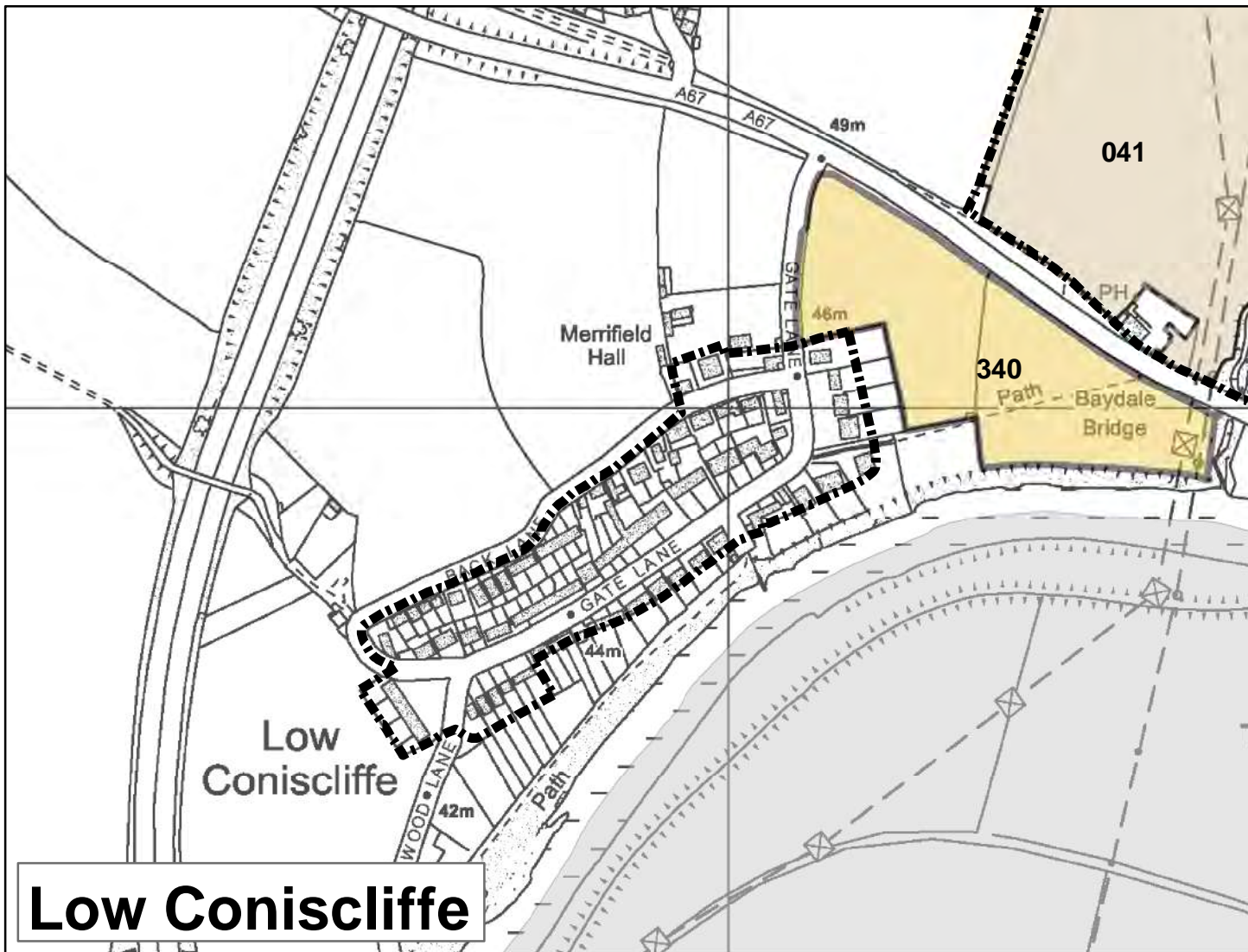


**Brafferton**

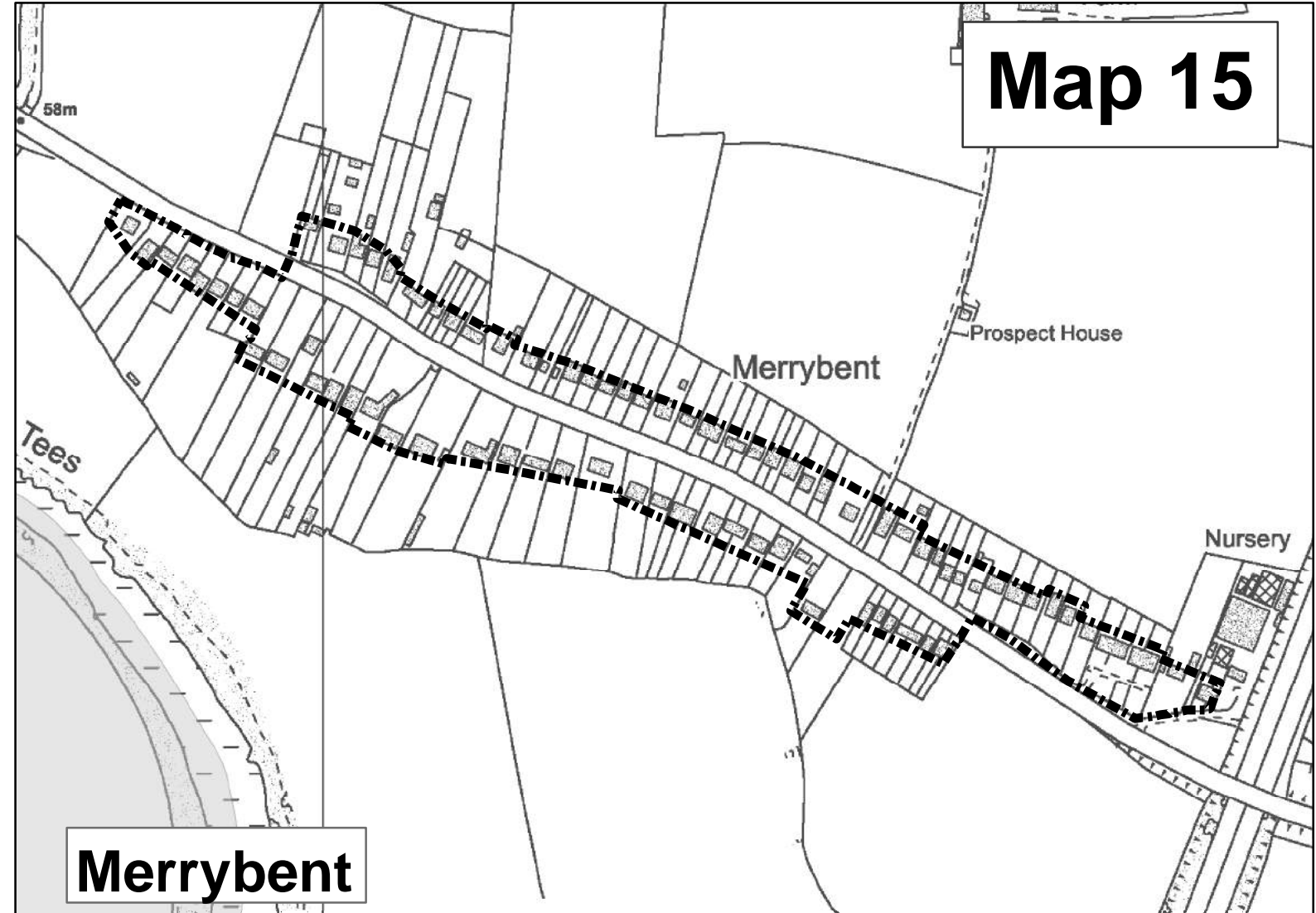


**Neasham**



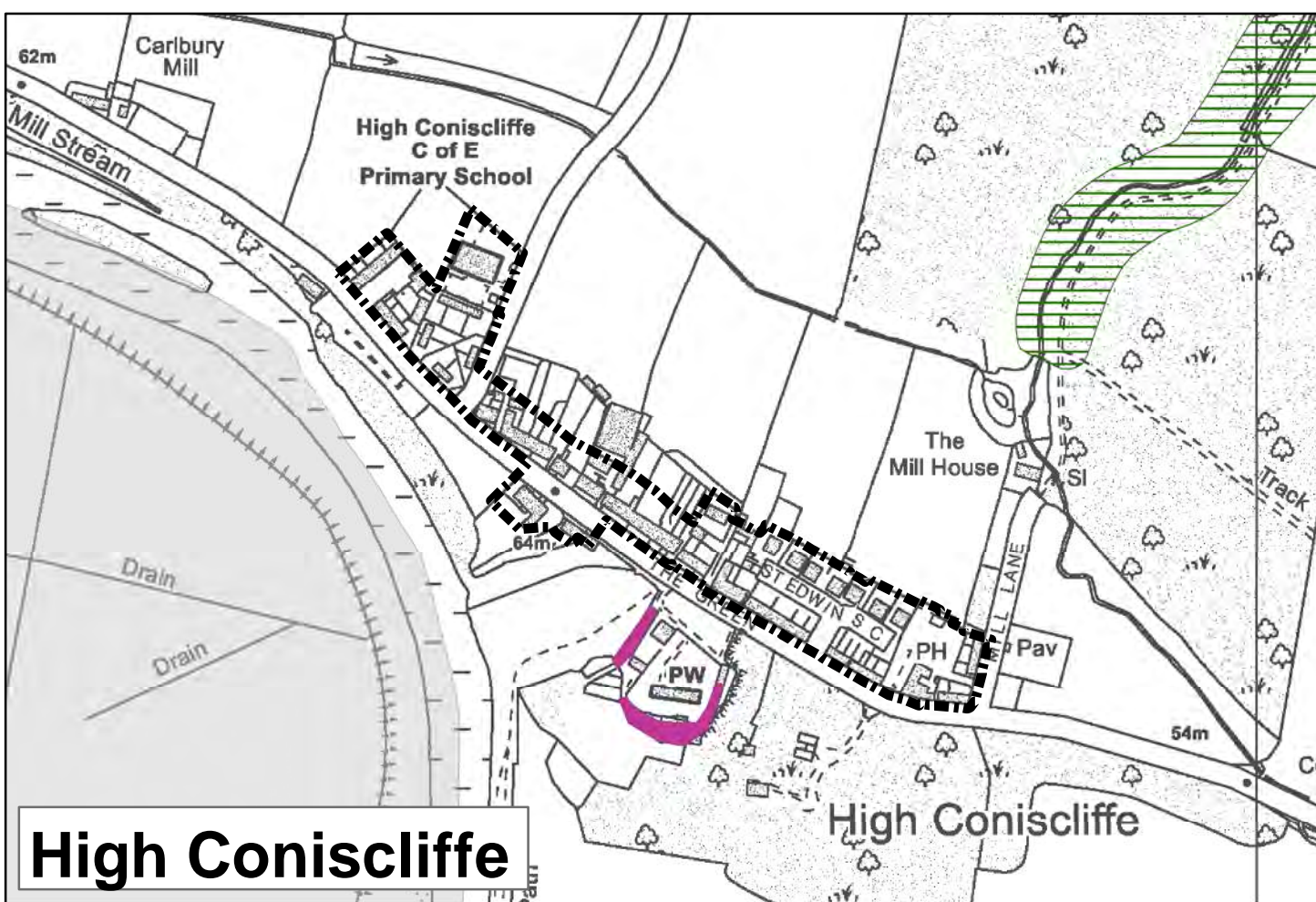


**Low Coniscliffe**

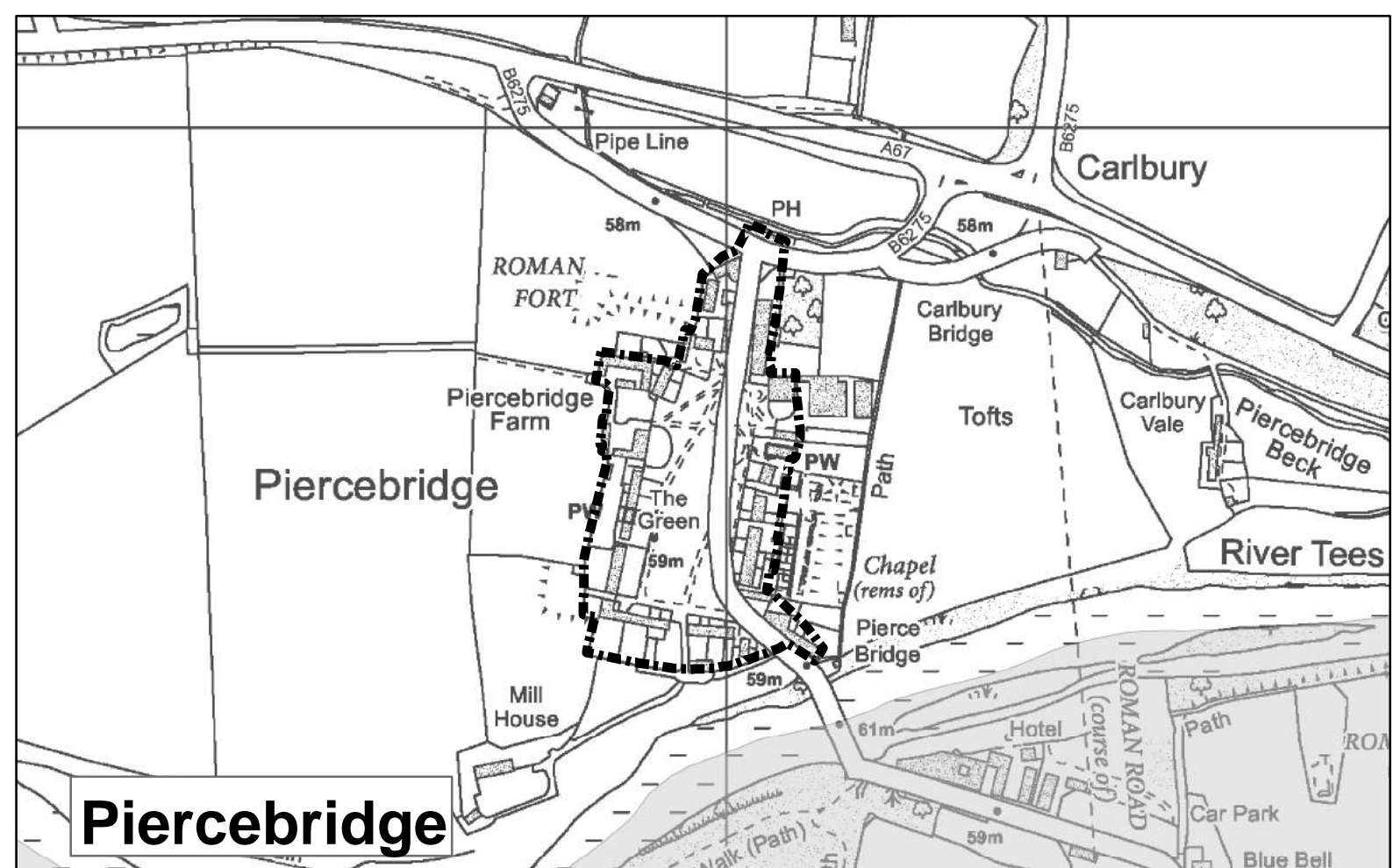


**Map 15**

**Merrybent**



**High Coniscliffe**



**Piercebridge**



- |   |  |   |  |
|---|--|---|--|
|    | Housing Allocation (H 2)                             |    | Stockton & Darlington Railway (ENV 2)              |
|    | Housing Commitment                                   |    | Green Wedges (ENV 3)                               |
|    | Mixed Use Allocation (H 2) & (E 2)                   |    | Local Nature Reserves (ENV 7)                      |
|    | Development Limits (H 3)                             |    | Local Wildlife Sites (ENV 7)                       |
|    | Greater Faverdale Strategic Allocation (H 11)        |    | Local Geological Sites (ENV 7)                     |
|    | Skerningham Strategic Allocation (H 10)              |    | Town Centre Boundary (TC 1)                        |
|  | Safeguarding Existing Employment Opportunities (E 1) |   | Primary Shopping Area (TC 2)                       |
|  | Promotion of New Employment Opportunities (E 2)      |  | Additional Site for Town Centre Uses (TC 3)        |
|  | Darlington Farmer Auction Mart (E 3)                 |  | District & Local Centres (TC 4)                    |
|   |  |  | Darlington Town Centre Fringe (TC 6)               |
|   |  |  | Key Public Transport Corridors (IN 1)              |
|   |  |  | Civil Aviation Authority Public Safety Zone (IN 5) |
|   |  |  | West Cemetery Extension (IN 10)                    |