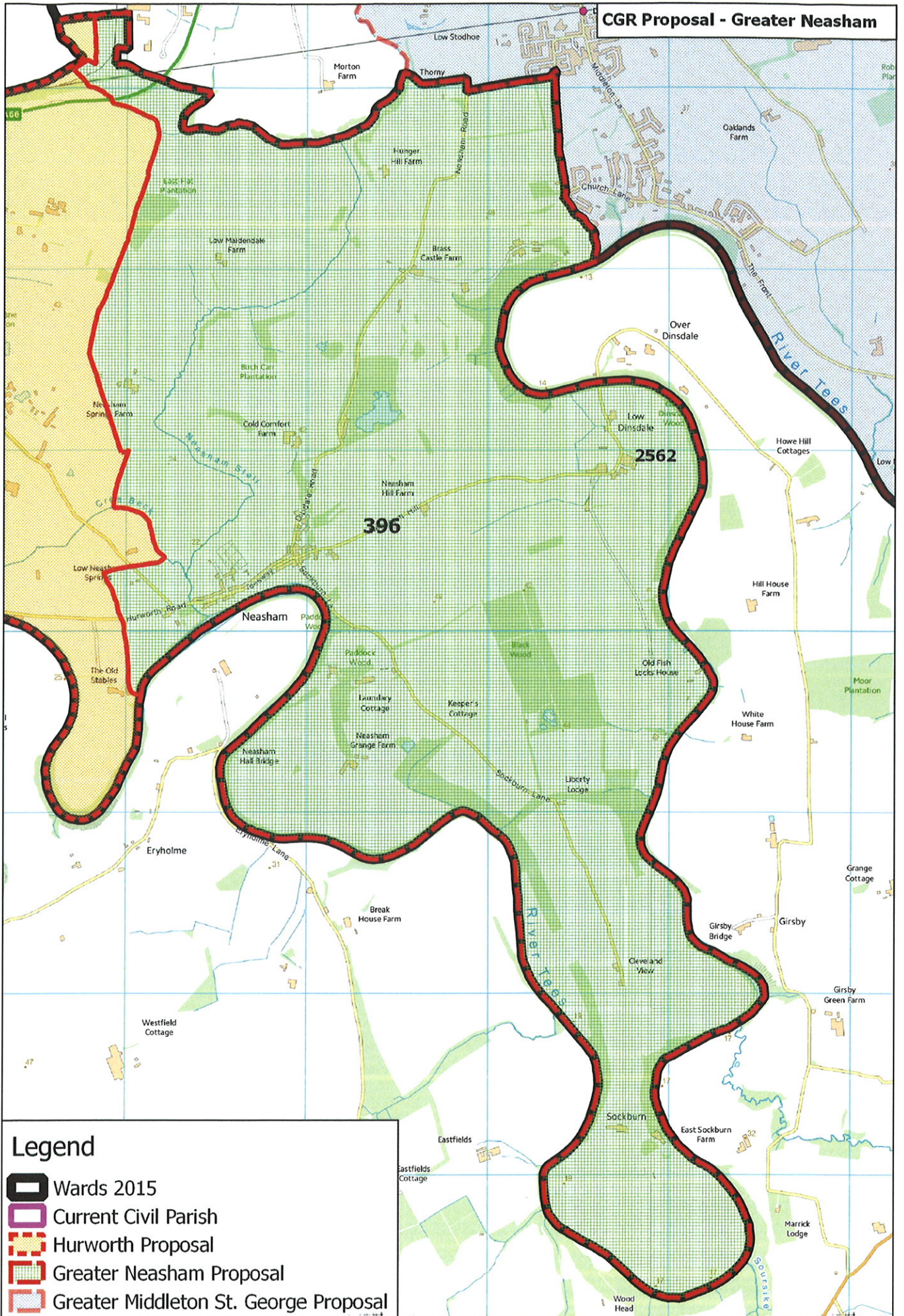







**CGR Proposal - Greater Neasham**



**Legend**

-  Wards 2015
-  Current Civil Parish
-  Hurworth Proposal
-  Greater Neasham Proposal
-  Greater Middleton St. George Proposal

**Barbara Harris**

---

**From:** IAN RIDDLE <ianriddle@btinternet.com>  
**Sent:** 30 November 2014 09:30  
**To:** Community Governance Review Consultaion  
**Subject:** community governance review

Dear Ms Whitehead,

Inclusion of Neasham in Community Governance Review

As Chairman of Sockburn Parish Meeting I would support the review of Neasham Parish Council boundaries and suggest the inclusion of Sockburn Parish Meeting.

Yours sincerely,

Dr I Riddle  
Sockburn Parish Meeting  
Pond View  
Sockburn Lane  
Neasham  
Darlington  
DL2 1PH

e-mail [ianriddle@btinternet.com](mailto:ianriddle@btinternet.com)

## Barbara Harris

---

**From:** John <john.weighell@btinternet.com>  
**Sent:** 05 January 2015 10:24  
**To:** Catherine Whitehead; Barbara Harris; Derek Dodwell; Helen Crute; Councillor Jones, B.  
**Subject:** Fw: Boundary Changes

Dear Catherine,

Further to Friday's meeting regarding the possible need for Neasham Parish to be included in the forthcoming Community Governance Reviews I would like to confirm and reiterate the views of Neasham Parish on this topic. From the outset we, as a council, have been of the opinion that we would wish our current boundary's to remain as they stand today and as such would not wish to become part of the review process

We do however appreciate that any necessary changes to the future boundary of Low Dinsdale Parish and its ability to remain as a standalone council could result in a wider review of all Parish Council and Parish Meeting boundary's within the new Hurworth and Middleton St George wards which would inevitably have an impact on Neasham.

As we pointed out at the meeting, although our preferred position would be to remain as we are we would not be against having discussions with Both Low Dinsdale Parish Council and/or Sockburn Parish Meeting regarding how best to move forward with parishioner representation within our particular area of the revised Hurworth Ward.

I trust the above helps with your deliberations on this matter, can I close by thanking you for your valuable advice and guidance at Friday's meeting, both my Vice Chairman and I now feel we have a much better understanding on this rather confusing topic.

Kind regards,

John Weighell.  
Chairman Neasham Parish Council

## Barbara Harris

---

**From:** John <john.weighell@btinternet.com>  
**Sent:** 02 February 2015 20:17  
**To:** Catherine Whitehead; Barbara Harris  
**Subject:** Community Governance Review.

Good evening Catherine.

At tonights meeting of Neasham Parish Council it was resolved that I contact you to confirm our decision to welcome residents of Low Dinsdale and Sockburn who are affected by boundary changes to become part of Neasham Parish.

I hope this clarifies any previous misunderstandings .

Kind regards.

John.

Coun John Weighell