



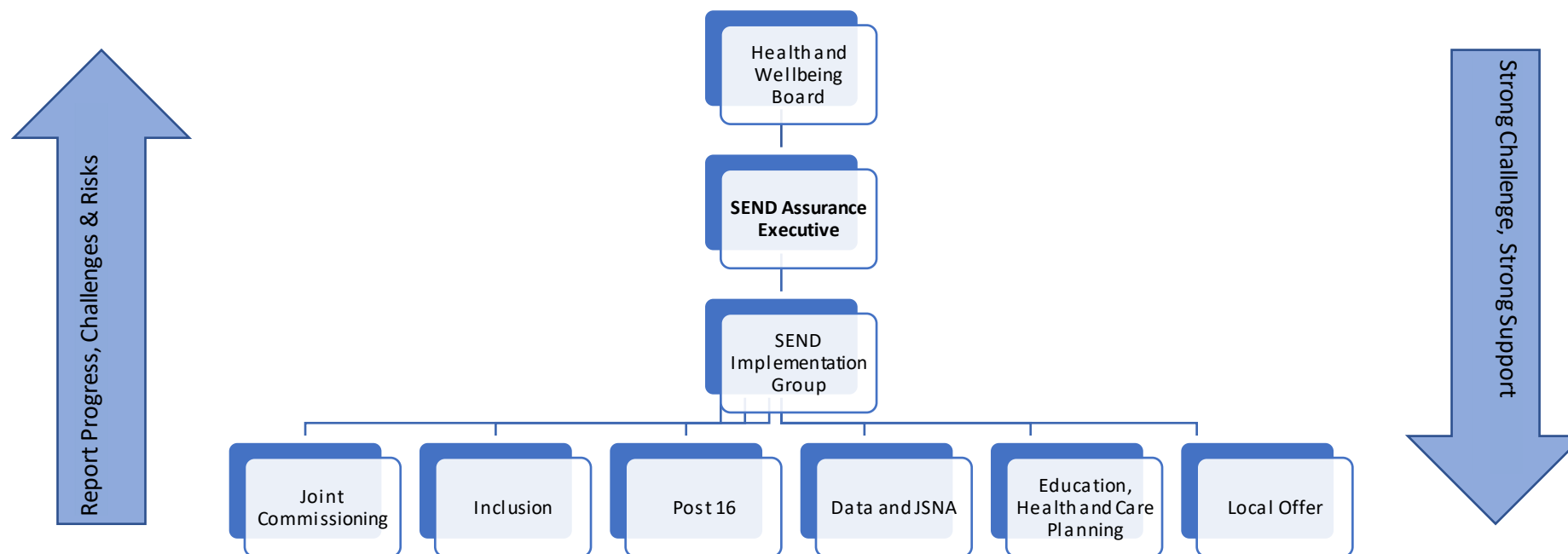
# **Darlington Special Education Needs and/or Disabilities (SEND) Local Area**

## **Written Statement of Action (WSoA)**

**April 2023**

## Governance

The governance structure is in place to ensure progress in the delivery of the Written Statement of Action (WSOA) and the wider SEND agenda.



## Written Statement of Action (WSOA)

The WSoA is Darlington's response to areas of significant weakness identified as part of the OFSTED and CQC inspection, January 2022.

1. The effectiveness of meeting the needs of children and young people with SEND and the impact of this on their outcomes
2. Poor preparation for adulthood and post 19 opportunities for children & Young people with SEND

The written statement has been created by the local area partnership and has involved a range of coproduction approaches. We have surveyed across the partnership receiving 74 responses from Parent/Carers, Children and Young People, Health, Education and Social Care professionals. We also hosted a co-production event with good participation from Parent/Carers, Health, Education and Social Care professionals.

The Written Statement of Action (WSoA) has been created as a high-level implementation and monitoring document. It uses plain English to support and model the coproduction and accessibility of the document which will be available on the Local Offer. The WSoA is an integral part of the continuing improvement journey for children and young people with SEND being undertaken by the Local Area partners.

## Monitoring the WSoA

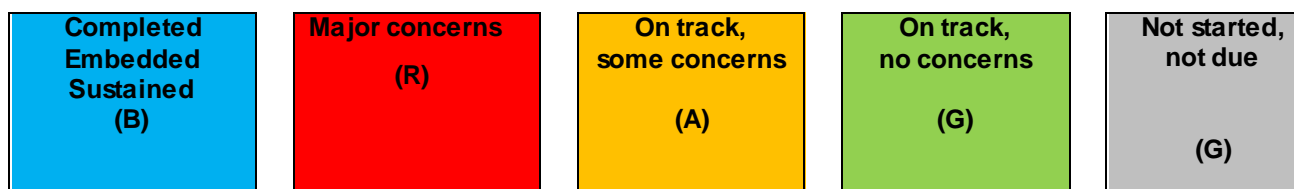
The WSoA is in the form of an action plan and will be used to monitor progress and completion of actions. It will also be used to measure the achieved outcomes to ensure the impact of the actions against agreed targets.

### Monitoring Schedule

	Frequency	Forum
Leadership and Operational Delivery	Monthly	SEND Implementation Group
Strategic Assurance	1/4ly	SEND Assurance Executive
Wider “place based” Governance	Annually	Health and Wellbeing Board

### Monitoring Actions

Actions will be monitored against progress and delivery within the given time frames using a **BRAGG** rating as below, this will be assessed and updated monthly.



### Monitoring Outcomes

Outcomes will be measured against timeframe and agreed outcome targets using the RAG rating below. Outcome targets are quantified whenever possible in terms of time, a percentage or number of improvements, the RAG rating will be updated monthly. This allows the lead to update the SEND Implementation Group, and governance, of any success, progress, risks, delays or problems. It will help the local area keep a record of how things are going and what happens on our improvement journey.

Impact Not Measured Or Negative Impact	Impact being measured Either Neutral or (not yet measured)	Positive Impact Both Measured and Demonstrable
--	--	--

**SEND Assurance Executive**

<b>Name</b>	<b>Role</b>	<b>Organisation</b>
Alex Sinclair	Director (Tees Valley)	North East and North Cumbria ICB
Christine Shields	Assistant Director Commissioning	Darlington Borough Council
Carla Scaife	Chair	Darlington Parent Carers Forum
James Stroyan	Group Director of People (Joint DASS/DCSS)	Darlington Borough Council
Jo Heaney	Head of Commissioning, Strategy and Delivery - Children and Young People (Tees Valley)	North East and North Cumbria ICB
Jo Littler	Head of SEND and Inclusion (Interim)	Darlington Borough Council
Kate Roe	Principal	Darlington College
Mike Butler	Chief Executive	Education Village AT
Ruth Kimmins	Designated Clinical Officer	North East and North Cumbria ICB
Tony Murphy	Assistant Director Education and Inclusion	Darlington Borough Council
David Watson	Programme Manager	Darlington Borough Council

**SEND Implementation Group**

<b>Name</b>	<b>Role</b>	<b>Organisation</b>
Sally Hudson	Head	Rise Carr College (PRU)
Caroline Green	Principal	March Bank and Beaumont Hill (Special School)
Helen Dummett	Exec Head	The Federation of Darlington Nursery Schools
Andy Gilpin		Darlington College
Alison Poulter	Head of Service (Children's)	Darlington Borough Council
Debbie Graham	Children and Young Persons SENDIASS	SENDIASS
Jo Heaney	Head of Commissioning, Strategy and Delivery - Children and Young People (Tees Valley)	North East and North Cumbria ICB
Jo Littler	Head of SEND and Inclusion (Interim)	Darlington Borough Council
Kevin Kelly	Service Manager Learning Disabilities and Mental Health	Darlington Borough Council
Michele Dickens	Strategic Commissioning Manager – SEND	Darlington Borough Council
Nicole Madden	Commissioning Delivery Manager (Tees Valley)	North East and North Cumbria ICB
Ruth Kimmins	Designated Clinical Officer	North East and North Cumbria ICB

Amy Robinson	Commissioning Officer	North East and North Cumbria ICB
Sukhdev Dosanjh	Head of Commissioning	Darlington Borough Council
Tony Murphy	Assistant Director Education and Inclusion	Darlington Borough Council
David Watson	Programme Manager	Darlington Borough Council

## The effectiveness of meeting the needs of children and young people with SEND and the impact of this on their outcomes

1.1	Strategy Link	Actions	Actioned by	Action Completed	Action Monitoring (BRAGG)	Outcome targets	IMPACT Monitoring (RAG)
Information to be shared across agencies without the need to keep telling their story	Joint Commissioning Inclusion EHCP	Consult with parent/carers, children & young people on alternative methods of collecting/collating/sharing views for statutory assessment and implement agreed process	Jo Littler	October 2022		Dec 2022 In post assessment follow up 90% of parents will say the process was effective in sharing with recognisable coproduction.	
		Implementation of new electronic process - DBC purchase new Education Management System (Liquid Logic Eyes) enabling single family record view and parent/carer portal	Tony Murphy	Sept 2023		Dec 2023 In post assessment follow up, audit of process shows effective transfer of information and tell it once approach	
story so far (success, progress, risks, delays)							Date
<p>Consultation has taken place and adaptations to practice reflecting this has taken place, there remains the need to assess the progress of this fully against outcome targets. Post assessment survey conducted in Dec 2022 has indicated that 81% of parents felt the process was effective in co-production. However, the survey also highlighted that CYP were often unaware of being assessed. Further work is in development in ensuring that CYP voice is captured in a way that is accessible to all, including the production of user-friendly guides to the EHCP Process. First meeting of this working group scheduled to take place at the end of April 2023. We are looking to utilise our new electronic management system to systematically capture views on coproduction on an ongoing real time basis for all new assessments.</p>							April 2023

<p>Survey in Dec 2022 – 90% of parents felt their view were heard and they had contributed to EHCP. More work to be done on CYP voice – working group established to create aids to capturing CYP voice including those who are nonverbal. Will be made available to parents CYP and professionals as an online resource. Also exploring ways to utilise technology - Mind of my Own app.</p>	
<p>Initial consultation has taken place, creating a report which demonstrates that most families prefer face to face consultations</p>	<p>Dec 2022</p>

1.2	1. The effectiveness of meeting the needs of children and young people with SEND and the impact of this on their outcomes						
Issue to be addressed	Strategy Link	Actions	Actioned by	By when	Action Status (BRAGG)	Outcome targets	IMPACT (RAG)
Responsiveness to understanding and planning for changing needs	Joint commissioning  Data & Performance	Develop a comprehensive SEND Data Dashboard for all pupils with SEN and align with SEND Strategy	Nicole Madden  Wendy Excell	Dec 2022		March 2023 Partners use the dashboard to identify existing and emerging need	
	EHCP	Ensure alignment between the services being commissioned and the data available about needs in Darlington	Michele Dickens  NicChilds	Mar 2023		March 2023 The SEND dashboard is part of the commissioning process for new service provision and delivery	
		Conduct deep dive into recent tribunal to see what lessons can be learned and action plan developed to implement findings	Jo Littler	Dec 2022		April 2023 There will be a 50% reduction in tribunal cases	
		Audit Process to be established to facilitate Placement Planning for predicted and emerging needs.	Jo Littler	Dec 2022		July 2023 There will be a reduction in the percentage of children and young people with an EHC plan receiving their education in out of authority provision to 10%	

story so far (success, progress, risks, delays)							Date
<p>Darlington is currently using a data heavy dashboard which does bring together Data information from Health, Education and Social Care. This has been shared with DfE and seen as very positive example of how a dashboard could work. However, the current dashboard does not create a clear intelligence-based view for Darlington as local area. A working group has been created and is meeting to address these issues, to focus data, outcome measurement and intelligence to produce a dashboard that can more useful across operations, commissioning and in the public domain. The next run of the data for the dashboard will fill several data gaps that have been identified.</p> <p>Initial look to make data more accessible has taken place with a further workshop planned. An audit process to facilitate placement planning is also underway. It is acknowledged that our current Data Dashboard would benefit from use of other technology solutions, an exploration of wider use of data software continues including MS Power BI.</p> <p>Deep dive into tribunal cases completed and report published.</p> <p>Deep dive conducted and action plan implemented. 15 cases logged with tribunal between Jan 22 &amp; March 23, 5 of these in the 3 months following deep dive. Impact not being felt but more indicative of parental lack of faith in mainstream/local offer.</p> <p>Audit process established and implemented. Some challenge by other LA's naming Darlington's local special provision. In terms of target – on track – currently at 11%</p>							<p>April 2023</p>
<p>Darlington does have a data dashboard in place with last iteration in November 2022, group now formed to look at the development moving forward to create approach versions of dashboard for different audiences. Initial timeframe seen as over ambitious.</p> <p>The reset of the Joint Commissioning Board will ensure links from the data team to inform strategic commissioning in terms of future developments. A meeting has been scheduled for the New Year (2023)</p>							<p>Dec 2022</p>



1.3	1. The effectiveness of meeting the needs of children and young people with SEND and the impact of this on their outcomes						
Issue to be addressed	Strategy Link	Actions	Actioned by	By when	Action Status (BRAGG)	Outcome targets	IMPACT (RAG)
Parents, carers and some school leaders are unclear about the Areas plans to ensure appropriate additional support for children with SEN including those with EHCPs	SEND Executive Group	Finalise new SEND Strategy including communication strategy	Tony Murphy  Jo Heaney	Dec 2022		March 23 Routes for accessing information including through the Local Offer, education providers, SENDIASS, partner provider agencies are monitored. Local services report a 50% fall in the number of contacts where parents have not known how children are supported, for example, through the graduated response	
	Inclusion	Further develop and agree the borough wide standard SEND Support Offer linked to graduated response	Helen Ellison	April 2023		Sept 2023A 10% year on year reduction in the numbers of parental referrals for statutory assessment across academic year.	
						Sept 2023 A 20% year on year reduction in the numbers of requests for specialist provision for children and young people whose needs could continue to be met mainstream education.	
	Inclusion	Further develop and agree the borough wide standard SEND Support Offer linked to graduated response	Helen Ellison	April 2023		Sept 2023 A 10% year on year reduction in the numbers of parental referrals for statutory assessment across academic year.	

						Sept 2023 A 20% year on year reduction in the numbers of requests for specialist provision for children and young people whose needs could continue to be met mainstream education.
						Sept 2023 100% of requests for managed moves will have been screened for SEND prior to submission and request will reduce overall year on year by 10%
						Dec 2023 The number of referrals for statutory assessment declined will reduce to 10% or less.
						Dec 2023 The numbers of statutory assessments carried out that result in an EHC plans being issued will reduce to 75%
						Dec 2023 The number of EHC plans issued that name mainstream provision will increase to 95%
						Year End 2023/24 Exclusions and suspensions for pupils with EHC plans and SEN Support will reduce by at least 10%
story so far (success, progress, risks, delays)						Date

<p>It was acknowledged, at the WSoA meeting on 17/1/23, that the creation of a truly co-produced strategy cannot be created in the time limits agreed as part of WSoA and that December 2022 was a false hope. Further consultation has taken place over the strategy at the Parent Carer Forum Conference. Active input was gained from the attendance at the event of over 80.</p> <p>Work continues to develop a truly co-produced, meaningful and informed strategy for Darlington.</p>	<p>April 2023</p>
<p>Discussions for revising a new SEND Strategy underway with agreement through a co-production event that "Preparation for Adulthood" will form the central aims of the strategy. The timeframe for production is seen as over ambitious specifically to ensure full co-production takes place. This will be discussed at initial WSoA meeting 17/1/23</p>	<p>December 2022</p>

1.4	1. The effectiveness of meeting the needs of children and young people with SEND and the impact of this on their outcomes						
Issue to be addressed	Strategy Link	Actions	Actioned by	By when	Action Status (BRAGG)	Outcome targets	IMPACT (RAG)
Resourced provision is not used effectively or known about		Consult on all current resource provision and outreach in Darlington. especially with children, young people and families.	Jo Littler Michele Dickens	Dec 2022		Jan 2023 Children, Young People and their parents will have been surveyed and responses collated to inform wider review. Minimum of 50% survey response	
		Conduct a review of all resourced provision and outreach within Darlington to ensure that the resources meet the needs demonstrated by data regarding the uptake and usage of places measured against audit of existing and emerging need.	Jo Littler Michele Dickens	July 2023		Sept 2023 Darlington will be commissioning resourced provision and outreach in line with the review outcome and needs identified by the data dashboard.	

		Ensure all commissioned SEND provision have service level agreements that have an outcomes framework to ensure clarity about expected outcomes. Includes the requirement that children, young people and families are independently surveyed on at least an annual basis to assure satisfaction of service delivery	Jo Littler Michele Dickens	July 2023		Dec 2023 75% of surveys will report satisfaction or above for all commissioned provision in Darlington	
						Dec 2023 All commissioned provision will be meeting the outcomes as specified in SLA's on at least 90% of outcomes measures	
		Review all central and commissioned support services to identify roles responsibility and outcome measures	Jo Littler Michele Dickens	July 2023		Dec 2023 The local authority will have an outcomes based framework in place for quality assurance of commissioned SEND provision with clearly identified roles for this process. Quarterly monitoring visits will be carried out and all provision	

						will have met the required standards in 90% of outcomes measures.	
story so far (success, progress, risks, delays)							Date
<p>This work on commissioned resource bases has been delayed due to legal obstacles as bases have been commissioned for delivery through Academy Trusts. We currently do not have full agreement of the Academy Trust Leads to reduce the numbers of commissioned places through the high needs place change process in Nov 2022. We remain committed to commissioning the current places until Sept 2024, despite unfilled places. Work is ongoing with the relevant trusts to reach agreement in respect of commissioning intentions, underpinned by needs analysis. Negotiation with Academy Trusts is seeking to alter usage of the current funding to ensure that a more flexible approach to delivery is taken by schools.</p> <p>On a more positive note, there has been widespread consultation on the outreach offer within Darlington, which is allowing us to move forward towards remodelling of these services and will again consult widely on proposed models of delivery to be in place by September 2023. Discussions have been conducted with the leaders concerned and work is progressing. DLT paper submitted with options for bases moving forward then we will consult more widely, with partners and with public.</p>							April 2023
Consultation on resource bases and outreach has commenced but is not complete at present. It is expected to be completed early in the new year.							Dec 2022

1.5	1. The effectiveness of meeting the needs of children and young people with SEND and the impact of this on their outcomes						
Issue to be addressed	Strategy Link	Actions	Actioned by	By when	Action Status (BRAGG)	Outcome targets	IMPACT (RAG)
Families experiencing long waiting times for health services	Data & Performance	Review waiting lists for all paediatric health services	Jo Heaney	Dec 2022		Jan 2023 Recovery plans in place for all services where waiting lists are beyond national and/local trajectories	
						Sept 2023 Reduction of 5% in waiting list times for all paediatric services in line with recovery plan	
		Parents/Carers and children and young people consulted to develop an understanding of the support they require whilst waiting to access services	Jo Heaney	Dec 2022		April 2023 Co-produced action plan formulated and agreed.	
						April 2023 75% of families with suspected neuro divergent children report to feeling adequately supported by the Family Support Service whilst awaiting assessment	
story so far (success, progress, risks, delays)							Date
Waiting list performance is being monitored through contracts. SLT have been able to successfully recruit to vacancies to posts which will reduce waiting times. OT and physio data currently all waiting times have fallen referral to treatment within RTT 18 week. OT/ Physio has been actively promoting videos information and advice sheets with families who were waiting. Uptake of these has been poor when they attended the face-to-face assessment. reasons for this to be explored							April 2023
Review and data across waiting lists has progressed and will inform work across next year to manage and reduce waiting list wherever possible							Dec 2022

1.6							
1. The effectiveness of meeting the needs of children and young people with SEND and the impact of this on their outcomes							
Issue to be addressed	Strategy Link	Actions	Actioned by	By when	Action Status (BRAGG)	Outcome targets	IMPACT (RAG)
Inaccessibility and under promotion of the local offer	The Local Offer	Identify good practice examples of "local offer"	Tony Murphy Sukhdev Dosanjh	Oct 2022		Nov 2022 Local Offer best practice and upkeep understood	
		Engage with Children, young people and families to identify the best options for a new "local Offer"		Dec 2022		Jan 2023 Best option for local offer identified and design process underway.	
		New "Local Offer" designed, created and launched Ensuring accessibility, promotion and universal use		July 2023		Sept 2023 Footfall on the local offer will increase by 50%	
				Sept 2023 Feedback feature in Local Offer will report 75% satisfaction rate			
story so far (success, progress, risks, delays)							Date
<p>This as with the note on SEND Strategy is an ambitious target that we are struggling to maintain, some initial consultation work has taken place, but the development of the Local Offer has a link with a wider comms platform within Darlington. Routine updates of information are maintained but a wider recreation is viewed as requiring a greater amount of time. The Implementation group look to get this right rather than rush to a quick fix.</p> <p>Work previous undertaken pre-pandemic is being revisited, with a clear emphasis on looking at how we make the local offer more dynamic, of greater use for children, young people and their families as well as across the whole local area partnership.</p>							April 2023



Local offers have been identified as good practice including –Middlesborough, Kingston upon Thames and others. Many good local offers appear to be run independently.	Nov 2022
Engagement with families is delayed but will be taking place early in the new year	Dec 2022

1.7	1. The effectiveness of meeting the needs of children and young people with SEND and the impact of this on their outcomes						
Issue to be addressed	Strategy Link	Actions	Actioned by	By when	Action Status (BRAGG)	Outcome targets	IMPACT (RAG)
EHC Plans do not consistently contain sufficient detail for a plan to be delivered and reviewed	EHCP	QA of EHCP completed assessments and reviews with contributing advice to be conducted on a termly basis with training needs to be identified and implemented through education, health (DCO) and social care (DSCO).	Jo Littler Ruth Kimmins	Dec 2022	Blue	Jan 2023 75% of new quality assured plans will have an overall rating of satisfactory or above.	Yellow
						Jan 2023 100% of EHC plans will have been transferred to the newest format.	Green
		Consultation with all key stakeholders, regarding Annual review process to include suggested ways to improve	Jo Littler Ruth Kimmins	Mar 2023	Yellow	April 2023 Clear guidance produced for all statutory annual review participants duties. Plan for implementation finalised for next academic year (Sept 2023).	Yellow
		New Annual review processes in place, to emphasise outcomes for provision made and clarity around when changes are required to an existing EHCP.	Jo Littler Ruth Kimmins	Sept 2023		Grey	Sept 2023 Plan in place to improve the quality of existing plans primarily at phase transfer and as required in individual circumstances
					Dec 2023 Audit of EHC plans annual reviews shows 75% are satisfactory or above		Yellow
story so far (success, progress, risks, delays)							Date
This area is progressing well and on time. The first deep dive conducted in Dec 2022 indicated that 68% of plans were rated as satisfactory overall, however the deep dive highlighted where poor statutory advice was a contributing factor. The second deep dive took place in March 23 here the overall							April 2023

<p>satisfactory rate had increased to 93% but again there were inconsistencies on the quality of advice. Of concern is the lack of take up for training to address identified areas for improvement from advice givers.</p> <p>Informal discussion has taken place but without formal consultation. It is proposed that we hold a small-scale trial to gather evidence before wider consultation and implementation in light of issues raised through Deep Dive events.</p> <p>Outcomes of deep dive share with DCO. Further review of the quality of health advice received undertaken jointly with SEN manager and plan to develop and roll out service specific training with clinicians to upskill the workforce as to what good looks like</p>	
<p>Multi Agency QA event successfully ran in Dec 2022. Learning from the audit is compiled and does identify a number of areas for learning and development.</p>	<p>Dec 2022</p>

1.8	1. The effectiveness of meeting the needs of children and young people with SEND and the impact of this on their outcomes						
Issue to be addressed	Strategy Link	Actions	Actioned by	By when	Action Status (BRAGG)	Outcome targets	IMPACT (RAG)
<p>Opportunities to encourage more children and young people with experience of the care system to socialise meet new friends and improve their confidence around others are limited.</p>	<p>Inclusion  Local Offer</p>	<p>Ensure clear links between Care Leavers Local Offer and SEND Local Offer, to ensure flow of information and better access.</p> <p>(Care leavers OFSTED focused visit Nov 2021 service was seen as very positive)</p>	<p>Tony Murphy  Sukhdev Dosanjh</p>	<p>Sept 2022</p>		<p>Dec 2022 Traffic between Care Leavers local offer and SEND local offer and vice versa measured.</p>	
		<p>Mirror Care leavers local offer across all Children and Young people with experience of the care system in Darlington.</p>	<p>Chris Bell  Tony Murphy</p>	<p>Sept 2023</p>		<p>Dec 2023 All care reviews clearly demonstrate that children and young people have access to opportunities to socialise, meet new friends and improve their confidence.</p>	
	<p>Linking to ongoing work including the “Promise Tree” reporting structure as developed by young people themselves and Darlo Care Crew (Children in Care Council)</p>	<p>Chris Bell  Tony Murphy</p>	<p>Ongoing</p>		<p>Ongoing Checked via Corporate Parenting Panel with engagement from Children in Care, Care Leavers and Council Members</p>		

story so far (success, progress, risks, delays)	Date
<p>Link has been created but it is difficult to fully evidence use of the link.</p> <p>It is noted that in the recent ILACS Inspection of children’s Services OFSTED Judged The experience and progress of children in care and care leavers as Outstanding.</p> <p><i>“There is a wide range of opportunities and recreational activities for children to enjoy. Social workers actively engage children in care and care leavers in clubs and participate in many activities with them. Children in care and care leavers feel valued and listened to. There is an enthusiastic looked after children and care leavers’ forum who call themselves the ‘Darlo Crew’. They regularly participate in corporate parenting panel meetings and value being involved in activities which inform service development and improvement.” <a href="https://files.ofsted.gov.uk/v1/file/50200877">https://files.ofsted.gov.uk/v1/file/50200877</a></i></p>	<p>April 2023</p>
<p>Links create between SEND and Care Levers Local Offers</p>	<p>Oct 2022</p>

1.9	1. The effectiveness of meeting the needs of children and young people with SEND and the impact of this on their outcomes						
Issue to be addressed	Strategy Link	Actions	Actioned by	By when	Action Status (BRAGG)	Outcome targets	IMPACT (RAG)
Leaders do not use information to plan, provide and review what services are available to children and young people with SEND and their families	Data & Performance Joint Commissioning	Data dashboard to be reviewed/ used at SEND Implementation Group, Joint Commissioning Board, SEND Assurance Exec and shared with HWB	Jo Heaney Tony Murphy	Dec 2022		Jan 2023 Darlington has a clear governance system that ensures and assures that the key targets within its SEND strategies are happening and led by data and intelligence	
		Ensure Implementation group has representation across whole system to reflect the breadth of the wider SEND agenda. The Implementation group works together on a strong challenge and strong support basis	Jo Heaney Tony Murphy	Dec 2022		Jan 2023 The SEND Implementation Group reflects the whole system in Darlington with clear voice of Children, young people and families. The group works collaboratively across the full SEND Agenda	
		New SEND Strategy to be developed based on coproduction, data, SEND inspection, SEND Green Paper and work already undertaken by SEND Implementation Group	James Stroyan Alex Sinclair	March 2023		April 2023 Darlington has a new SEND Strategy in place that has been co-produced and is owned by the whole partnership.	
		Develop more creative way to hear the Voice of Children and young people e.g., forum, focus groups, wider communication method (internet, social media, etc....)	Jo Heaney Tony Murphy	Dec 2022		April 2023 Consultation with children and young people will be complete and action plan developed to capture their voice through active engagement	

						July 2023 In survey 75% of children and young people will report that they have been able to participate and influence the whole SEND agenda	
story so far (success, progress, risks, delays)							Date
Data Dashboard see 1.2							April 2023
SEND Strategy see 1.3							
Voice of children and young people see 1.10							
Data dashboard under review see 1.2							Dec 2022
Membership of both SEND Implementation Group and SEND Assurance Executive have been expanded to ensure clear membership and presence across the wider SEND Local Area – both executive and implementation groups have representation across Education, Health, Social Care and Parent/Carer Forum. The involvement of Children and Young people is being addressed but is currently via representation of CYP SENDIASS							Nov 2022

<b>1.10</b>	<b>1. The effectiveness of meeting the needs of children and young people with SEND and the impact of this on their outcomes</b>						
<b>Issue to be addressed</b>	<b>Strategy Link</b>	<b>Actions</b>	<b>Actioned by</b>	<b>By when</b>	<b>Action Status (BRAGG)</b>	<b>Outcome targets</b>	<b>IMPACT (RAG)</b>

Ensuring aspirations of CHILDREN AND YOUNG PEOPLE are captured and are reflected in their EHCP's EHCP	Data & Performance	Develop young person SEND Forum to develop good practice guidance for practitioners	Sukhdev Dosanjh	Jan 2023		Jan 2023 Representative group on young people developed with clarity around roles and responsibilities	
		Ensuring ALL CHILDREN AND YOUNG PEOPLE have access to SENDIASS if requested	Sukhdev Dosanjh	Jan 2023		Jan 2023 100% of all appropriate requests for SENDIASS support by children and young people are being met	
		SEND Health Facilitator to be appointed to give independent advice & support for children and young people in health matters	Jo Heaney	Jan 2023		April 2023 SEND Health Facilitator will have an action plan for delivery to support children and young people, and their families	
						July 2023 Follow up with survey users will indicate 75% rated the service satisfactory or above	
	Deep dive QA to be implemented on a termly basis	Jo Littler	March 2023		Dec 2023 90% of quality assured plans & related advice will be rated satisfactory or better on preparation for adulthood.		
	QA on all initial plans	Jo Littler	March 2023		Sept 2023 100% of EHC plans will contain children and young person views and aspirations, appropriate to age and development		
	QA on all reviews for Y9 onwards	Jo Littler	March 2023		Dec 2023		



						100% post Year 9 reviews will show appropriate discussion of preparation for adulthood and Outcomes	
story so far (success, progress, risks, delays)							Date
<p>A mechanism to gain a truly representative voice of children and young people remain a problematic area but work is underway between SENDIASS, PCF and others to look at ways to provide this in more meaningful ways. Currently the CYP SENDIASS is providing representation and challenge on behalf of Children and Young People, while a wider and more representative mechanism created.</p> <p>ICB efficiencies has resulted in recruitment to a SEND Health Facilitator post being paused, a new business case was developed the post is now out to advent with closing date 12-6-23</p> <p>Appropriate discussion of Preparation for Adulthood and outcomes for post year 9 are starting from low baseline since this is an area that stakeholders appear less confident in. Even in new plans there is a low threshold but work continues to get Preparation for adulthood firmly established as golden thread for SEND across Darlington, it will feature heavily within the emerging SEND Strategy.</p> <p>The implementation of a new data system for EHC planning on Liquid Logic has given us an opportunity to ensure that as part of the EHC plan process outcomes, voice of the child/young person and aspirations a more readily accessible to support quality monitoring and inform strategic planning and future commissioning.</p> <p>A working group has been formed to address ECHP process and engagement through the pupil voice. This group includes a broad partnership Education, Health, Social Care, PCF, SENDIASS and is working initially around the creation of tools for those who are non-verbal.</p>							April 2023
Young Persons SENDIASS post in place and very actively engaging with Children and Young People across Darlington, played a central role in a recent Preparation for Adulthood event for the local area							Dec 2022

<b>1.11</b>	<b>1. The effectiveness of meeting the needs of children and young people with SEND and the impact of this on their outcomes</b>						
<b>Issue to be addressed</b>	<b>Strategy Link</b>	<b>Actions</b>	<b>Actioned by</b>	<b>By when</b>	<b>Action Status (BRAGG)</b>	<b>Outcome targets</b>	<b>IMPACT (RAG)</b>

Rising absence and suspension from schools need to be addressed	Inclusion	The development of the Inclusion Strategy will contain advice and targets for improving attendance and suspensions in all schools in line with recently produced national guidance	James Stroyan Alex Sinclair	July 2023		Dec 2023 Reduce the persistent absence rates for pupils with an EHC plan by 10%	
		Establish key criteria and legal processes for supporting schools with absences	Dianne Gage	July 2023		Dec 2023 Reduce the number of fixed term suspensions for pupils with SEND in Darlington by 10%	
story so far (success, progress, risks, delays)							Date

<b>1.12</b>	<b>1. The effectiveness of meeting the needs of children and young people with SEND and the impact of this on their outcomes</b>						
<b>Issue to be addressed</b>	<b>Strategy Link</b>	<b>Actions</b>	<b>Actioned by</b>	<b>By when</b>	<b>Action Status (BRAGG)</b>	<b>Outcome targets</b>	<b>IMPACT (RAG)</b>

Children and young people with SEND have not achieved well or attained highly, particularly at the end of Key Stage 4	Inclusion	Ensure monitoring of achievement of children and young people both those with SEN support and those with EHC plans at end of key stage 4 on an individual school basis.	Helen Ellison	Oct 2022		March 2023 Children and young people's achievement at specific key stages is part of SEND Data Dashboard and monitored by SEND Governance Model	
		Support schools to share best practice of SEN support within mainstream education by building on SENCO network to influence whole school agenda, rather than specialist support.	Helen Ellison	Jan 2023		Jan 2023 Best practice is shared across all Darlington Schools support a reduction in managed moves	
	Sept 2023 20% reduction in referrals to specialist provision year on year						
	Sept 2023 15% reduction in requests for EHC plans year on year						
	Sept 2023 Attainment at key stage 4 at least is in line with national and regional data.						
story so far (success, progress, risks, delays)							Date
Report on SEN support completed and has been submitted to both SEND Implementation group and SEND Assurance Group for approval. Actions within the report to be agreed and implemented							April 2023
Monitoring in place and will form a significant aspect of the SEND Data Dashboard.							
Data issues complete and a report is now in hand							Dec 2022

2.1	2. Poor preparation for adulthood and post 19 opportunities for children & Young people with SEND						
Issue to be addressed	Strategy Link	Actions	Actioned by	By when	Action Status (BRAGG)	Outcome targets	IMPACT (RAG)
<p>Children and young people with SEND, <b>especially those without an EHC plan</b>, want more support to understand the world of work, further education opportunities and training, including apprenticeships, clearly.</p>	<p>Local Offer  Post 16</p>	<p>DBC will work in partnership with Youth Employment UK to map provision, understand YP and their experiences, barriers and challenges and support employers to create quality youth-friendly opportunities for young people including inspiration and work experience activity</p>	<p>Seth Pearson</p>	<p>Dec 2022</p>	<p style="background-color: #00aaff; color: white; text-align: center;">[Action Status]</p>	<p>Oct 2023 Youth Voice Survey will indicate improved understanding of employment and training opportunities available</p>	<p style="background-color: #ffcc00;">[Impact]</p>
		<p>Review the independent careers information advice and guidance offer in Darlington for all children and young people with SEN support and ECH plans</p> <p>Ensure this is captured in the local offer</p> <p>Ensure this is available for those not accessing provision within Darlington (through attending Out of Area, or</p>	<p>Paul Richardson</p>	<p>Jan 2023</p>	<p style="background-color: #ffcc00;">[Action Status]</p>	<p>Oct 2023 the proportion of young people who are NEET in Darlington will be at least in line with regional and national rates or below.</p> <p>Sept 2023 100% of children and young people with SEN support and EHC plans show evidence of independent careers information advice and guidance in Darlington</p>	<p style="background-color: #ffcc00;">[Impact]</p>

		absent from their provision, or NEET)				Sept 2023 Independent careers information advice and guidance offer in Darlington will have a clear presence on the Local Offer, with the footfall increasing month on month.	
		Review the work experience offer in Darlington for all children and young people with SEN support and ECH plans  Ensure this is captured in the local offer  Ensure this is available for those not accessing provision within Darlington (through attending Out of Area, or absent from their provision, or those Not in Education, Employment or Training (NEET)	Paul Richardson	Jan 2023		Oct 2023 The proportion of young people who are NEET in Darlington will be in line with regional and national rates or below.	
						Sept 2023 Revised work experience opportunities will be available in Darlington for 100% children and young people with SEN support and EHC plans	
						Sept 2023 Work experience opportunities in Darlington will have a clear presence on the Local Offer with the footfall increasing month on month.	
story so far (success, progress, risks, delays)							Date
Careers advice is supported across Darlington as part of a wider Tees Valley Combined Authority commissioning piece and so creates a difficulty for a single authority to fully influence work undertaken across a wider regional area. However, with the formation of an Employment/Employability Forum the providers SEND lead has been co-opted to be part of the working group. This is understood as an area of need of improvement.							April 2023

<p>As a local area we are working closely with NDTi around Supported Internships but as a part of this work they are supporting Darlington to look at the wider employment and employability offer.</p> <p>There is a clear willingness from Youth Employment UK to look at the website that has been developed for Darlington, as part of the wider youth friendly Darlington initiative, to ensure that it is addressing the needs of young people with SEND, with and without EHC plans <a href="https://www.youthemployment.org.uk/careers-advice-help/youth-friendly-places-in-the-uk/darlington/">https://www.youthemployment.org.uk/careers-advice-help/youth-friendly-places-in-the-uk/darlington/</a></p>	
<p>Very positive – co-production event facilitated by NDTi took place in November and has produced an initial version of an audit of PfA in Darlington. There still remains a lack of cohesion across the post 19 which is recognised as a genuine focus area. There are small pockets of genuinely positive practice such as Project Search but access to more mainstream offers remains poor this is recognised and does form part of the work being undertaken as part of the wider “Youth Employment” initiatives in Darlington</p>	Dec 2022

2.2	2 Poor preparation for adulthood and post 19 opportunities for children & Young people with SEND						
Issue to be addressed	Strategy Link	Actions	Actioned by	By when	Action Status (BRAGG)	Outcome targets	IMPACT (RAG)
Support for young people transitioning into adulthood to access appropriate health care.	Post 16	Develop Health Transition Pathways across all children & young people's acute services	Ruth Kimmins	Dec 2022		Dec 2022 Health transition pathway developed and in place across all services within acute setting	
		Test transition pathway/model across paediatrics and OT services				April 2023 Transitions plans will have been piloted with 5 children and young people and their families in Paediatrics and OT. The learning will be used to inform the wider roll out across all services within the acute setting	
		Sept 2023 50 % of children and young people identified as needing to transition to Adults Services will have commenced on transitions pathway					
		Process will be developed to ensure all children and young people with a Learning Disability will be flagged on GP records and will be invited for their 14 plus annual health check	Ruth Kimmins	April 2023		April 2024 The numbers of children and young people taking up annual health check will be at least maintained but be stretched to 86% by April 2024 to allow for a full year effect	

story so far (success, progress, risks, delays)							
Ready Steady Go Model. Linking in with regional work been undertaken to develop CYP, parent/ Carer and professionals' information about transitions Meeting arranged with Adult MH/ LD service to develop pathways from paediatrics to adults' health services for those with complex learning disability and health needs for those leaving post 18 education provision							April 2023


2.3	2 Poor preparation for adulthood and post 19 opportunities for children & Young people with SEND						
Issue to be addressed	Strategy Link	Actions	Actioned by	By when	Action Status (BRAGG)	Outcome targets	IMPACT (RAG)
Opportunities for children and young people with SEND to learn how to travel independently needs to be readily available	Post 16	Review of independent travel training offer.	Melanie Dickinson  Michele Dickens	Dec 2022		March 2023 Independent Travel Training will be provided for all young people who are eligible	
story so far (success, progress, risks, delays)							Date
Review on going but delayed, this is seen as a priority to move forward in the coming months.							
Strategic Commissioner has met with the Assistant Director of Education and MD to understand the requirements of the Independent Travel Trainer and to scope out requirements to address actions within the WSOA							Dec 2022



<p>An initial review of provision has taken place to determine what models of delivery are implemented across the tees and regional authorities</p> <p>A report will be presented to DLT in January to review options for consideration</p>	
---	--

2.4	2 Poor preparation for adulthood and post 19 opportunities for children & Young people with SEND						
Issue to be addressed	Strategy Link	Actions	Actioned by	By when	Action Status (BRAGG)	Outcome targets	IMPACT (RAG)
Post 19 offer	Post 16	Ensure Darlington's Youth Employment Initiative service identifies, and targets support for unemployed YP with SEND between the ages of 18 and 25 (initiative covers 18-29)	Tony Murphy	Dec 2022		Sep 2022 Baseline dataset established of current employment support levels for young people with SEND	
						April 2023 20% increase of young people supported with a personal plan	
		Review current response to employment support for those young people furthest from employment, including supported employment, supported internships, Traineeships and support towards work.	Paul Richardson	Dec 2022		Jan 2023 Clear understanding of destinations across young people with SEND	
		Map local opportunities for education, training and employment, post 18, for young people with SEND and publish on local offer	Paul Richardson Kevin Kelly	Dec 2022		Jan 2023 Comprehensive gap analysis better support towards work. This will form the basis of further action.	

		To have a clear, co-produced preparation for Adulthood pathway which details roles and responsibilities of all key stakeholders	Paul Richardson Kevin Kelly	Mar 2023		April 2023 A clear plan of delivery of better support towards work based around broadly on "preparation for adults". This will form the basis of further action.	
		Updated post 16 and post 19 information available via Local Offer	Paul Richardson Kevin Kelly	July 2023		Dec 2023 Young people and families can access clear information of opportunities, services, support and advice available.	
						Dec 2023 Footfall on this area will be monitored and will see an increase of 50%	
						Dec 2023 More than 75% of those responding with feedback after accessing this area of the local offer will respond positively	
		Establish Darlington SEND employment partnership to develop the best routes into employment for young people with SEND. This will include young people, parents, employers, colleges,	Paul Richardson Kevin Kelly	April 2023		April 2023 Partnership established and baseline dataset identified of current number of young people with SEND accessing a full range of employment opportunities	

		supported employment providers and Darlington Borough Council.				April 24 20% increase in the number of young people accessing a full range of employment opportunities	
story so far (success, progress, risks, delays)							Date
<p>An initial list of Post16 opportunities is embedded below and we continue to work on this as new provision is discovered.</p>  <p>Post 16 EET Opportunities SEND.d</p> <p>There is a page for careers and post 16 options on the local authority website at: <a href="https://www.darlington.gov.uk/education-and-learning/11-19-partnership/careers-and-post-16-options/">https://www.darlington.gov.uk/education-and-learning/11-19-partnership/careers-and-post-16-options/</a>. Most post 16 providers also have their details on the local offer, however a lot of mainstream providers do not differentiate between those with SEN and those without on their information. In post-16 the SEN support definition is not used rather learners self-declare whether they have a 'learning disability and/or difficulty' (LDD).</p> <p>A Send Employment and Employability Partnership has been formed and had an initial meeting, it is formed from a wide partnership across Darlington and is exploring how to influence the wider employment agenda in Darlington. Links with wider youth employment initiatives have been established and will form a clear part of the governance of this group moving forward.</p> <p>Work continues around supported internships with NDTi and will develop over the coming months.</p> <p>Mapping work has commenced but is not complete at this time .</p> <p>Transitions and Preparation for Adulthood has been identified as a specific priority for the People Group in Darlington BC, work is underway bringing together Adult Services, Children's Services and Education to bring together an overarching transformation programme to address this issue across the local authority and area.</p> <p>Meetings have taken place with Project Search (supported Internships) and Triage (Work and Health Programme)</p>							April 2023

<p>Darlington YEI programme does offer support to those who have been identified as in receipt of EHC plans but this is limited currently. There remains difficulty in identifying individuals who have been in receipt of SEN support pre 16 in the system and there are no educational markers that follow them post 16. Work is underway to look how this can be improved to provide evidence of progression route for those in receipt of SEN support.</p> <p>See 2.1</p>	<p>Dec 2022</p>
---	-----------------